

## Product datasheet for **TA351653**

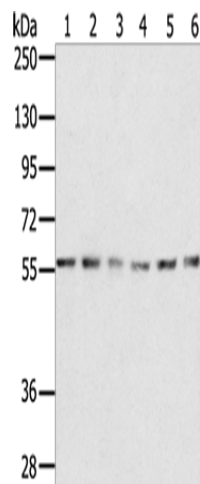
### SERINC2 Rabbit Polyclonal Antibody

#### Product data:

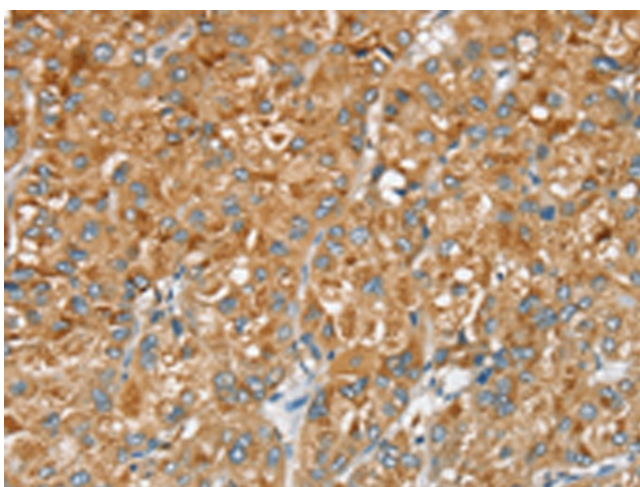
Product Type:	Primary Antibodies
Applications:	IHC, WB
Recommended Dilution:	WB: 200-1000 WB positive control: K562, NIH/3T3, Jurkat, 293T, 231 and hepg2 cells IHC: 25-100 Positive control: Human liver cancer Predicted cell location: Cytoplasm
Reactivity:	Human, Mouse
Host:	Rabbit
Isotype:	IgG
Clonality:	Polyclonal
Immunogen:	Synthetic peptide of human SERINC2
Formulation:	pH7.4 PBS, 0.05% NaN <sub>3</sub> , 40% Glycerol
Concentration:	lot specific
Purification:	Antigen affinity purification
Conjugation:	Unconjugated
Storage:	Store at -20°C as received.
Stability:	Stable for 12 months from date of receipt.
Predicted Protein Size:	51 kDa
Gene Name:	serine incorporator 2
Database Link:	<a href="#">NP_849196</a> <a href="#">Entrez Gene 230779 Mouse</a> <a href="#">Entrez Gene 347735 Human</a> <a href="#">Q96SA4</a>
Background:	SERINC2 involved in phosphatidylserine metabolic process, and positive regulation of transferase activity.
Synonyms:	FKSG84; PRO0899; TDE2; TDE2L
Protein Families:	Transmembrane



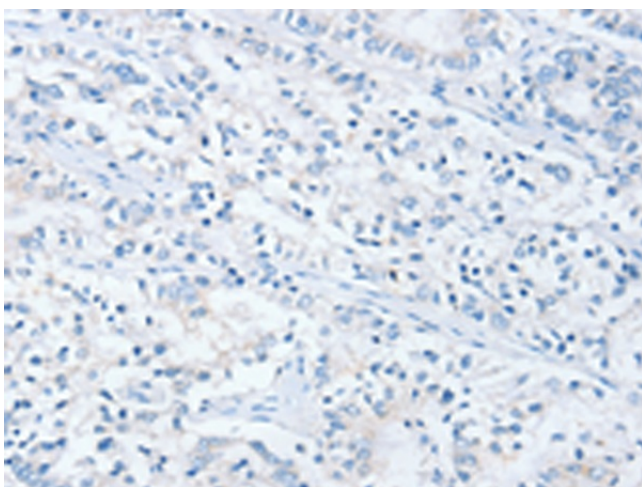
[View online »](#)

**Product images:**


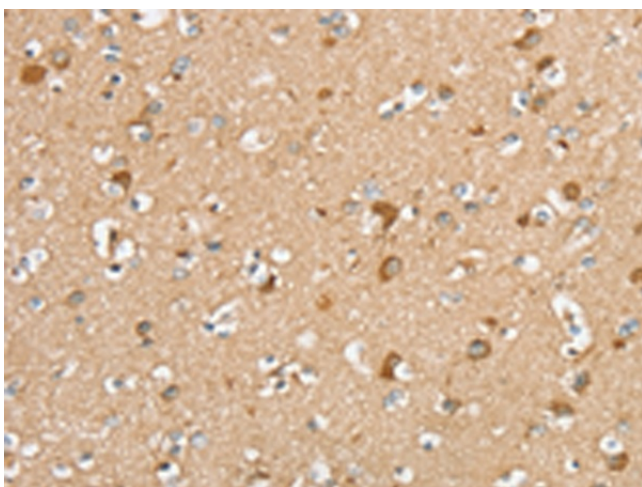
Gel: 8%SDS-PAGE  
 Lysate: 40 µg  
 Lane 1-6: K562 cells  
 NIH/3T3 cells  
 Jurkat cells  
 293T cells  
 231 cells  
 hepg2 cells  
 Primary antibody: TA351653 (SERINC2 Antibody)  
 at dilution 1/200  
 Secondary antibody: Goat anti rabbit IgG at  
 1/8000 dilution  
 Exposure time: 1 minute



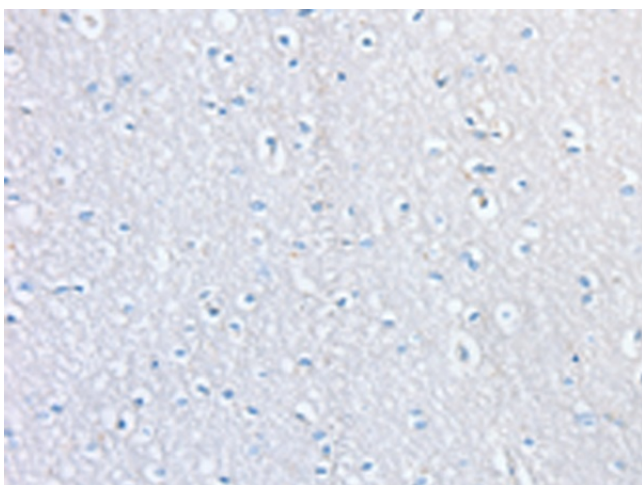
Immunohistochemistry of paraffin-embedded  
 Human liver cancer tissue using TA351653  
 (SERINC2 Antibody) at dilution 1/20 (Original  
 magnification: ×200)



Immunohistochemistry of paraffin-embedded Human liver cancer tissue using TA351653 (SERINC2 Antibody) at dilution 1/20, treated with synthetic peptide. (Original magnification: ×200)



Immunohistochemistry of paraffin-embedded Human brain tissue using TA351653 (SERINC2 Antibody) at dilution 1/20 (Original magnification: ×200)



Immunohistochemistry of paraffin-embedded Human brain tissue using TA351653 (SERINC2 Antibody) at dilution 1/20, treated with synthetic peptide. (Original magnification: ×200)