

## Product datasheet for **TA351651S**

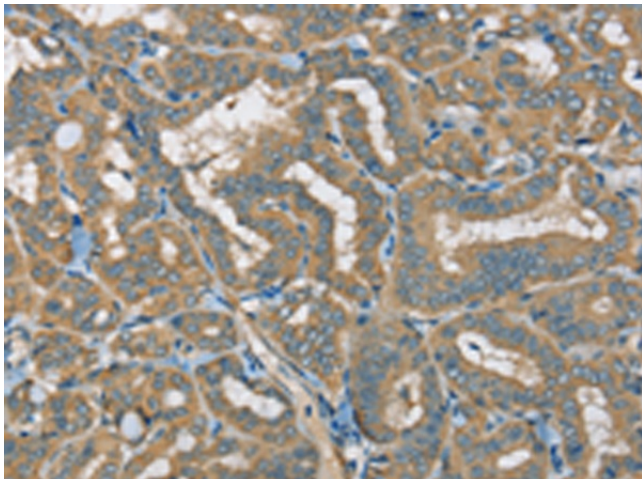
### SERCA3 (ATP2A3) Rabbit Polyclonal Antibody

#### Product data:

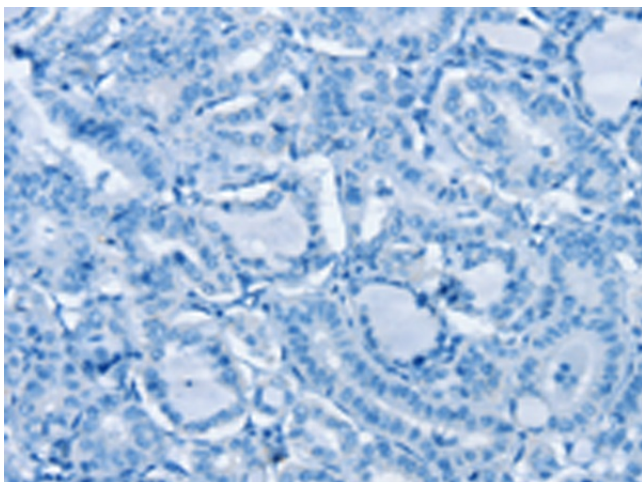
Product Type:	Primary Antibodies
Applications:	IHC
Recommended Dilution:	IHC: 25-100 Positive control: Human thyroid cancer Predicted cell location: Cytoplasm
Reactivity:	Human, Mouse, Rat
Host:	Rabbit
Isotype:	IgG
Clonality:	Polyclonal
Immunogen:	Synthetic peptide of human ATP2A3
Formulation:	pH7.4 PBS, 0.05% NaN <sub>3</sub> , 40% Glycerol
Purification:	Antigen affinity purification
Conjugation:	Unconjugated
Storage:	Store at -20°C as received.
Stability:	Stable for 12 months from date of receipt.
Gene Name:	ATPase sarcoplasmic/endoplasmic reticulum Ca <sup>2+</sup> transporting 3
Database Link:	<a href="#">NP_777613</a> <a href="#">Entrez Gene 25391 Rat</a> <a href="#">Entrez Gene 489 Human</a> <a href="#">Q93084</a>
Background:	This gene encodes one of the SERCA Ca <sup>2+</sup> -ATPases, which are intracellular pumps located in the sarcoplasmic or endoplasmic reticula of muscle cells. This enzyme catalyzes the hydrolysis of ATP coupled with the translocation of calcium from the cytosol to the sarcoplasmic reticulum lumen, and is involved in calcium sequestration associated with muscular excitation and contraction. Alternative splicing results in multiple transcript variants encoding different isoforms.
Synonyms:	SERCA3
Protein Families:	Druggable Genome, Transmembrane
Protein Pathways:	Alzheimer's disease, Calcium signaling pathway



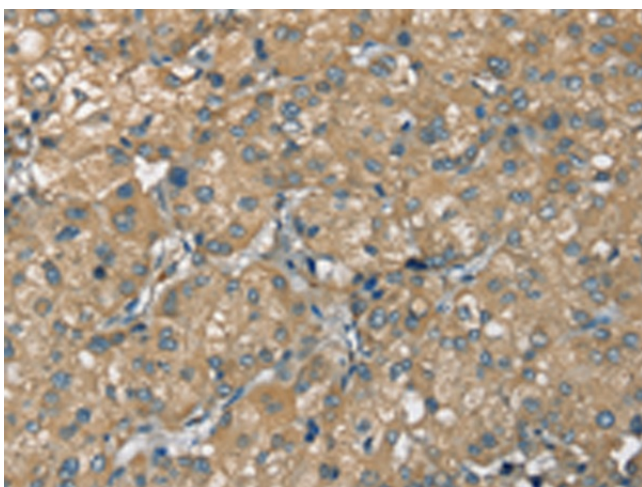
[View online »](#)

**Product images:**

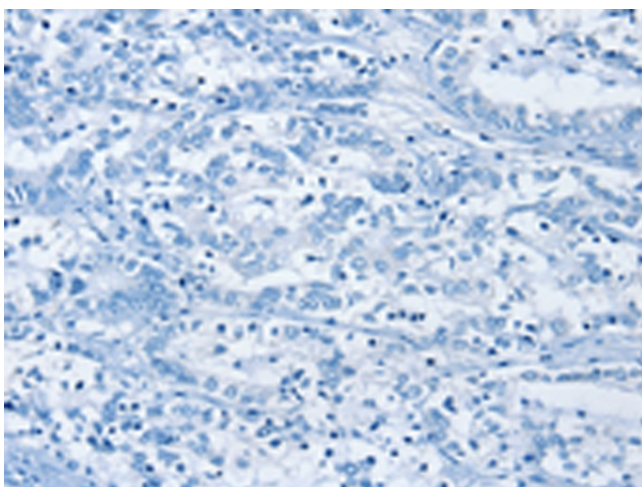
Immunohistochemistry of paraffin-embedded Human thyroid cancer tissue using [TA351651] (ATP2A3 Antibody) at dilution 1/30 (Original magnification:  $\times 200$ )



Immunohistochemistry of paraffin-embedded Human thyroid cancer tissue using [TA351651] (ATP2A3 Antibody) at dilution 1/30, treated with synthetic peptide. (Original magnification:  $\times 200$ )



Immunohistochemistry of paraffin-embedded Human liver cancer tissue using [TA351651] (ATP2A3 Antibody) at dilution 1/30 (Original magnification:  $\times 200$ )



Immunohistochemistry of paraffin-embedded Human liver cancer tissue using [TA351651] (ATP2A3 Antibody) at dilution 1/30, treated with synthetic peptide. (Original magnification:  $\times 200$ )