

Product datasheet for **TA351650**

SENP6 Rabbit Polyclonal Antibody

Product data:

Product Type:	Primary Antibodies
Applications:	IHC, WB
Recommended Dilution:	WB: 200-1000 WB positive control: Hela and K562 cells IHC: 25-100 Positive control: Human breast cancer Predicted cell location: Nucleus
Reactivity:	Human
Host:	Rabbit
Isotype:	IgG
Clonality:	Polyclonal
Immunogen:	Synthetic peptide of human SENP6
Formulation:	pH7.4 PBS, 0.05% NaN ₃ , 40% Glycerol
Concentration:	lot specific
Purification:	Antigen affinity purification
Conjugation:	Unconjugated
Storage:	Store at -20°C as received.
Stability:	Stable for 12 months from date of receipt.
Predicted Protein Size:	126 kDa
Gene Name:	SUMO1/sentrin specific peptidase 6
Database Link:	NP_056386 Entrez Gene 26054 Human Q9GZR1



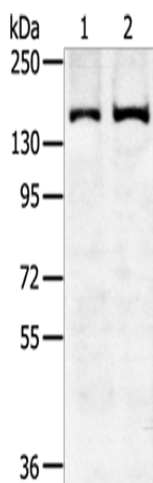
[View online »](#)

Background: Ubiquitin-like molecules (UBLs), such as SUMO1 (UBL1; MIM 601912), are structurally related to ubiquitin (MIM 191339) and can be ligated to target proteins in a similar manner as ubiquitin. However, covalent attachment of UBLs does not result in degradation of the modified proteins. SUMO1 modification is implicated in the targeting of RANGAP1 (MIM 602362) to the nuclear pore complex, as well as in stabilization of I-kappa-B-alpha (NFKBIA; MIM 164008) from degradation by the 26S proteasome.

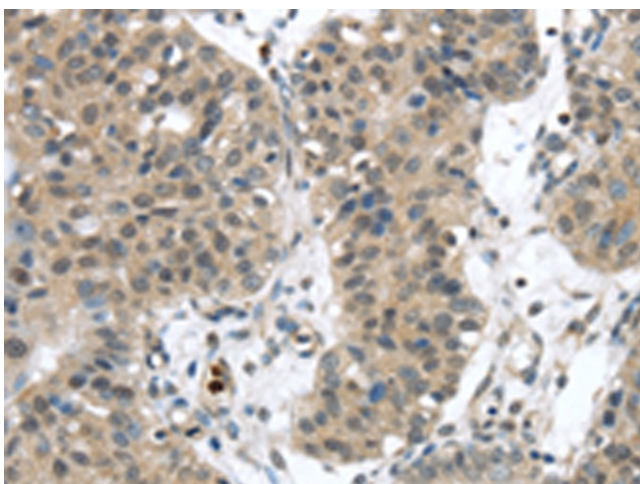
Synonyms: SSP1; SUSP1

Protein Families: Druggable Genome, Protease

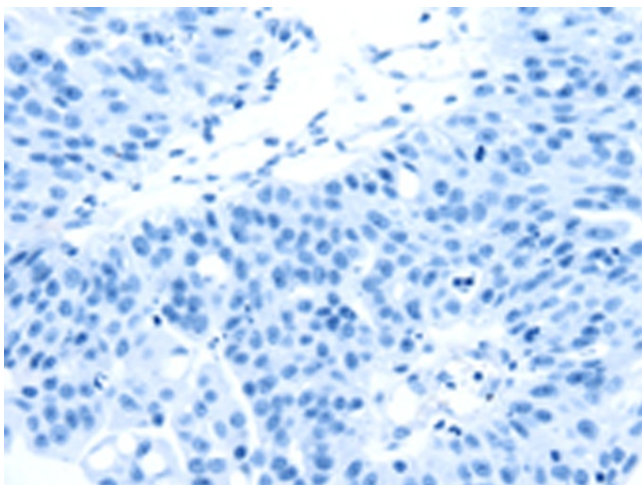
Product images:



Gel: 6%SDS-PAGE
 Lysate: 40 µg
 Lane 1-2: HeLa cells
 K562 cells
 Primary antibody: TA351650 (SENP6 Antibody) at dilution 1/450
 Secondary antibody: Goat anti rabbit IgG at 1/8000 dilution
 Exposure time: 5 minutes



Immunohistochemistry of paraffin-embedded Human breast cancer tissue using TA351650 (SENP6 Antibody) at dilution 1/20 (Original magnification: ×200)



Immunohistochemistry of paraffin-embedded Human breast cancer tissue using TA351650 (SENP6 Antibody) at dilution 1/20, treated with synthetic peptide. (Original magnification: ×200)