

## Product datasheet for **TA351647**

### MRG15 (MORF4L1) Rabbit Polyclonal Antibody

#### Product data:

Product Type:	Primary Antibodies
Applications:	IHC, WB
Recommended Dilution:	WB: 500-2000 WB positive control: Hepg2 and k562 cells IHC: 25-100 Positive control: Human liver cancer Predicted cell location: Cytoplasm
Reactivity:	Human, Mouse, Rat
Host:	Rabbit
Isotype:	IgG
Clonality:	Polyclonal
Immunogen:	Synthetic peptide of human MORF4L1
Formulation:	pH7.4 PBS, 0.05% NaN <sub>3</sub> , 40% Glycerol
Concentration:	lot specific
Purification:	Antigen affinity purification
Conjugation:	Unconjugated
Storage:	Store at -20°C as received.
Stability:	Stable for 12 months from date of receipt.
Predicted Protein Size:	41 kDa
Gene Name:	mortality factor 4 like 1
Database Link:	<a href="#">NP_006782</a> <a href="#">Entrez Gene 21761 Mouse</a> <a href="#">Entrez Gene 300891 Rat</a> <a href="#">Entrez Gene 10933 Human</a> <a href="#">Q9UBU8</a>



[View online »](#)

**Background:**

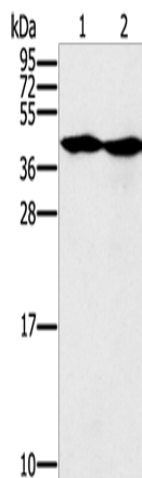
MORF4L1 (also known as MRG15) and MORF4-related gene X (MRGX). The human MORF4 gene maps to chromosome 4q33-q34.1. MORF4 induces a senescent-like phenotype in complementation group B immortal cell lines. The genes encoding MRG15 and MRGX map to chromosomes 15q24 and Xq22, respectively. MORF4, MORF4L1 and MRGX each contain a C-terminal leucine zipper. An association between MORF4L1, Rb (retinoblastoma tumor suppressor) and PAM14 (protein associated with MORF4L1) suggests a role for MORF4L1 in transcription regulation.

**Synonyms:**

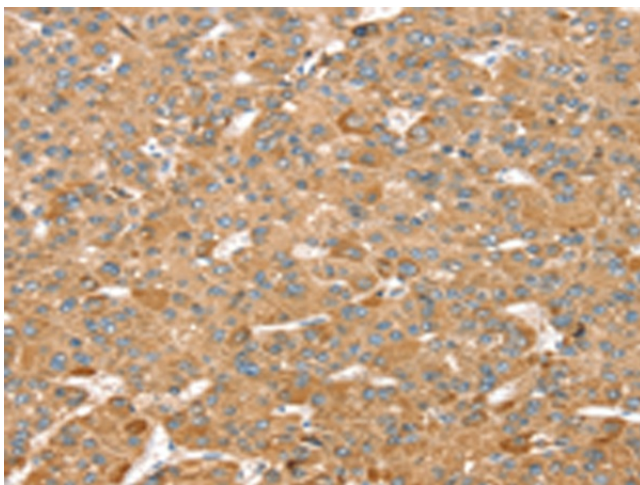
Eaf3; FWP006; Hst17725; MEAF3; MORFRG15; MRG15; S863-6

**Protein Families:**

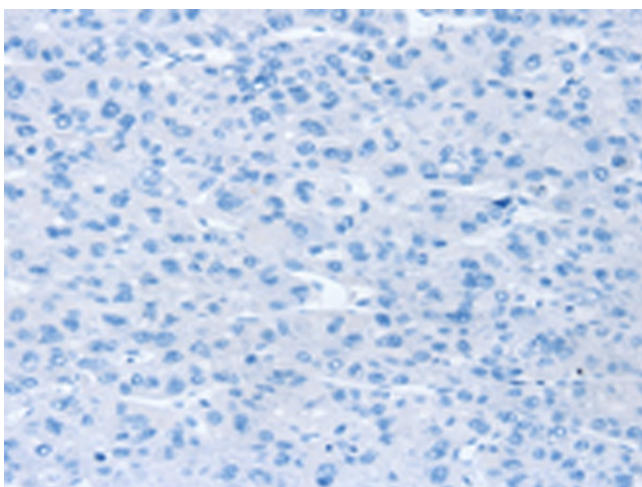
Transcription Factors

**Product images:**


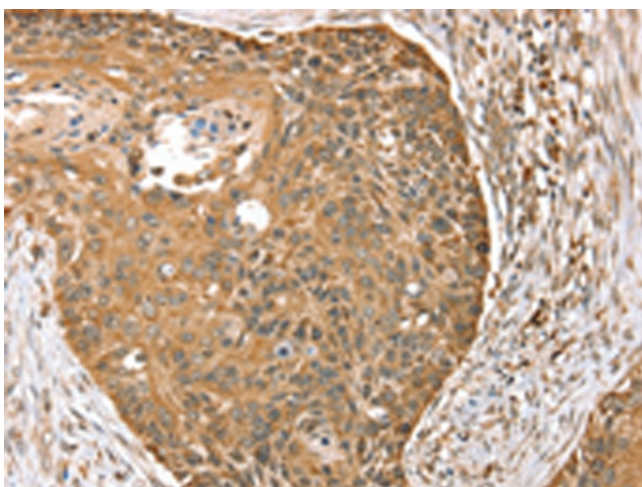
Gel: 12%SDS-PAGE  
 Lysate: 40 µg  
 Lane 1-2: Hepg2 cells  
 k562 cells  
 Primary antibody: TA351647 (MORF4L1 Antibody)  
 at dilution 1/400  
 Secondary antibody: Goat anti rabbit IgG at  
 1/8000 dilution  
 Exposure time: 1 minute



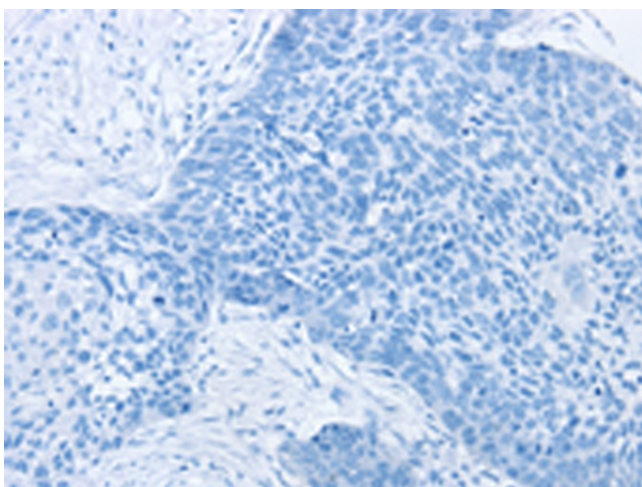
Immunohistochemistry of paraffin-embedded  
 Human liver cancer tissue using TA351647  
 (MORF4L1 Antibody) at dilution 1/35 (Original  
 magnification: ×200)



Immunohistochemistry of paraffin-embedded Human liver cancer tissue using TA351647 (MORF4L1 Antibody) at dilution 1/35, treated with synthetic peptide. (Original magnification: ×200)



Immunohistochemistry of paraffin-embedded Human esophagus cancer tissue using TA351647 (MORF4L1 Antibody) at dilution 1/35 (Original magnification: ×200)



Immunohistochemistry of paraffin-embedded Human esophagus cancer tissue using TA351647 (MORF4L1 Antibody) at dilution 1/35, treated with synthetic peptide. (Original magnification: ×200)