

## Product datasheet for **TA351646**

### Semaphorin 7a (SEMA7A) Rabbit Polyclonal Antibody

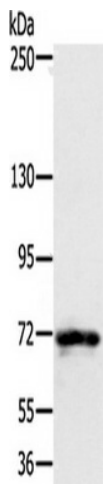
#### Product data:

Product Type:	Primary Antibodies
Applications:	IHC, WB
Recommended Dilution:	ELISA: 2000-5000, WB: 500-2000, IHC: 25-100
Reactivity:	Human, Mouse
Host:	Rabbit
Isotype:	IgG
Clonality:	Polyclonal
Immunogen:	Synthetic peptide of human SEMA7A
Formulation:	pH7.4 PBS, 0.05% NaN <sub>3</sub> , 40% Glycerol
Concentration:	lot specific
Purification:	Antigen affinity purification
Conjugation:	Unconjugated
Storage:	Store at -20°C as received.
Stability:	Stable for 12 months from date of receipt.
Predicted Protein Size:	75 kDa
Gene Name:	semaphorin 7A (John Milton Hagen blood group)
Database Link:	<a href="#">NP_003603</a> <a href="#">Entrez Gene 20361 Mouse</a> <a href="#">Entrez Gene 8482 Human</a> <a href="#">O75326</a>
Background:	The protein encoded by this gene binds to cell surfaces through a glycosylphosphatidylinositol (GPI) linkage. The encoded glycoprotein is found on activated lymphocytes and erythrocytes. This protein may be involved in immunomodulatory and neuronal processes. Defects in this gene can result in loss of bone mineral density (BMD). Three transcript variants encoding different isoforms have been found for this gene.
Synonyms:	CD108; CDw108; H-SEMA-K1; H-Sema-L; JMH; SEMAK1; SEMAL
Protein Pathways:	Axon guidance

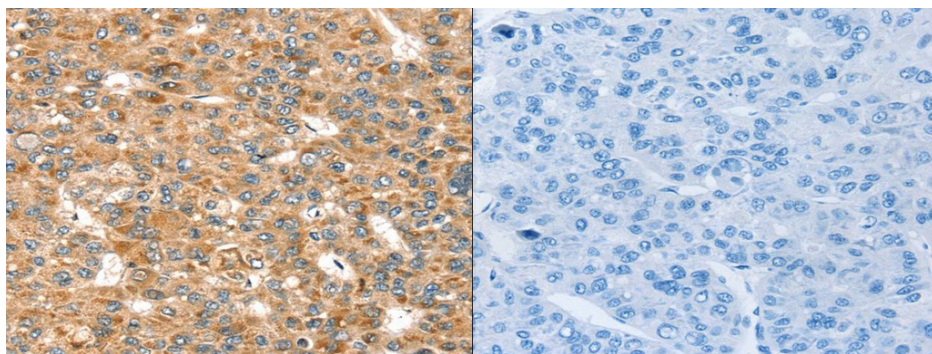


[View online »](#)

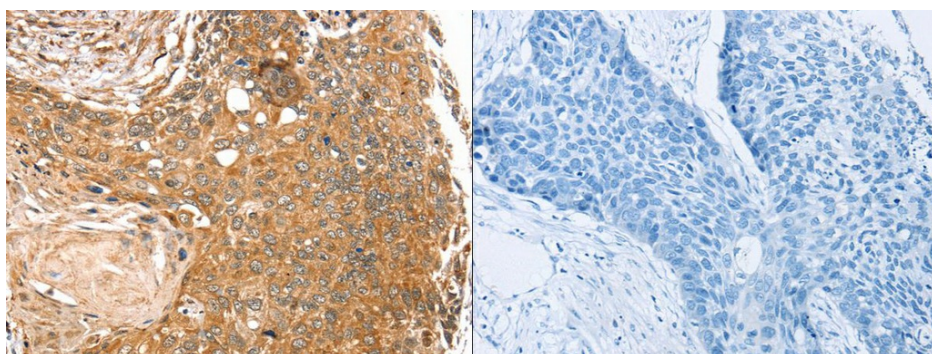
## Product images:



Gel: 6%SDS-PAGE, Lysate: 40 ug, Lane: Mouse spleen tissue, Primary antibody: (SEMA7A Antibody) at dilution 1/200, Secondary antibody: Goat anti rabbit IgG at 1/8000 dilution, Exposure time: 10 seconds



The image on the left is immunohistochemistry of paraffin-embedded Human liver cancer tissue using (SEMA7A Antibody) at dilution 1/20, on the right is treated with synthetic peptide. (Original magnification:  $\times 200$ )



The image on the left is immunohistochemistry of paraffin-embedded Human esophagus cancer tissue using (SEMA7A Antibody) at dilution 1/20, on the right is treated with synthetic peptide. (Original magnification:  $\times 200$ )