

Product datasheet for **TA351645**

SEMA6D Rabbit Polyclonal Antibody

Product data:

| | |
|-----------------------|----------------------------------------------------------------------------------------------------------------------------------------------------|
| Product Type: | Primary Antibodies |
| Applications: | IHC, WB |
| Recommended Dilution: | WB: 500-2000 WB positive control: LOVO cell lysate IHC: 50-100 Positive control: Human liver cancer Predicted cell location: Cytoplasm |
| Reactivity: | Human, Mouse |
| Host: | Rabbit |
| Isotype: | IgG |
| Clonality: | Polyclonal |
| Immunogen: | Synthetic peptide of human SEMA6D |
| Formulation: | pH7.4 PBS, 0.05% NaN ₃ , 40% Glycerol |
| Concentration: | lot specific |
| Purification: | Antigen affinity purification |
| Conjugation: | Unconjugated |
| Storage: | Store at -20°C as received. |
| Stability: | Stable for 12 months from date of receipt. |
| Gene Name: | semaphorin 6D |
| Database Link: | NP_705869 Entrez Gene 214968 Mouse Entrez Gene 80031 Human Q8NFY4 |

Background: Semaphorins are a large family, including both secreted and membrane associated proteins, many of which have been implicated as inhibitors or chemorepellents in axon pathfinding, fasciculation and branching, and target selection. All semaphorins possess a semaphorin (Sema) domain and a PSI domain (found in plexins, semaphorins and integrins) in the N-terminal extracellular portion. Additional sequence motifs C-terminal to the semaphorin domain allow classification into distinct subfamilies.



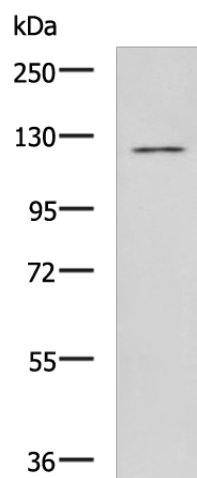
[View online »](#)

Synonyms: FLJ11598; KIAA1479

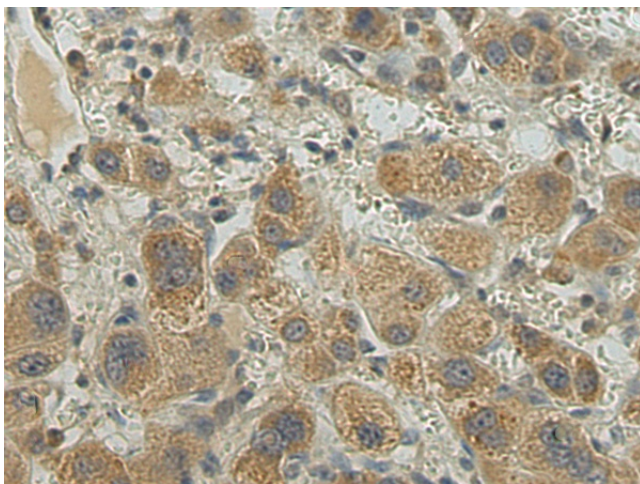
Protein Families: Druggable Genome, Transmembrane

Protein Pathways: Axon guidance

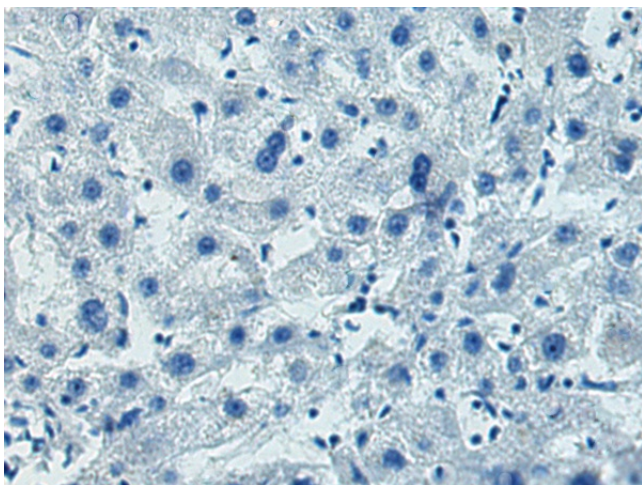
Product images:



Gel: 6%SDS-PAGE
Lysate: 40 μ g
Lane: LOVO cell lysate
Primary antibody: TA351645 (SEMA6D Antibody) at dilution 1/700
Secondary antibody: Goat anti rabbit IgG at 1/5000 dilution
Exposure time: 5 minutes



Immunohistochemistry of paraffin-embedded Human liver cancer tissue using TA351645 (SEMA6D Antibody) at dilution 1/30 (Original magnification: \times 200)



Immunohistochemistry of paraffin-embedded Human liver cancer tissue using TA351645 (SEMA6D Antibody) at dilution 1/30, treated with synthetic peptide. (Original magnification: $\times 200$)