

## Product datasheet for **TA351644**

### SEMA6A Rabbit Polyclonal Antibody

#### Product data:

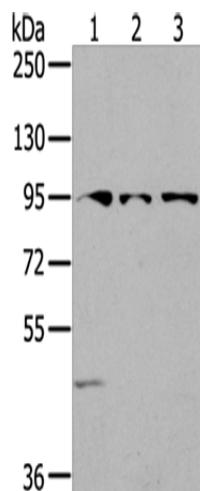
Product Type:	Primary Antibodies
Applications:	WB
Recommended Dilution:	WB: 200-1000 WB positive control: 293T, Lovo and HepG2 cells
Reactivity:	Human, Mouse
Host:	Rabbit
Isotype:	IgG
Clonality:	Polyclonal
Immunogen:	Synthetic peptide of human SEMA6A
Formulation:	pH7.4 PBS, 0.05% NaN <sub>3</sub> , 40% Glycerol
Concentration:	lot specific
Purification:	Antigen affinity purification
Conjugation:	Unconjugated
Storage:	Store at -20°C as received.
Stability:	Stable for 12 months from date of receipt.
Predicted Protein Size:	114 kDa
Gene Name:	semaphorin 6A
Database Link:	<a href="#">NP_065847</a> <a href="#">Entrez Gene 20358 Mouse</a> <a href="#">Entrez Gene 57556 Human</a> <a href="#">Q9H2E6</a>
Background:	The transmembrane semaphorin SEMA6A is expressed in developing neural tissue and is required for proper development of the thalamocortical projection. Cell surface receptor for PLXNA2 that plays an important role in cell-cell signaling. Required for normal granule cell migration in the developing cerebellum. Promotes reorganization of the actin cytoskeleton and plays an important role in axon guidance in the developing central nervous system.
Synonyms:	HT018; SEMA; SEMA6A1; SEMAQ; VIA
Protein Families:	Transmembrane



[View online »](#)

Protein Pathways: Axon guidance

**Product images:**



Gel: 6%SDS-PAGE  
Lysate: 40  $\mu$ g  
Lane 1-3: 293T cells  
Lovo cells  
HepG2 cells  
Primary antibody: TA351644 (SEMA6A Antibody)  
at dilution 1/200  
Secondary antibody: Goat anti rabbit IgG at  
1/8000 dilution  
Exposure time: 2 minutes