

Product datasheet for **TA351643**

SEMA6A Rabbit Polyclonal Antibody

Product data:

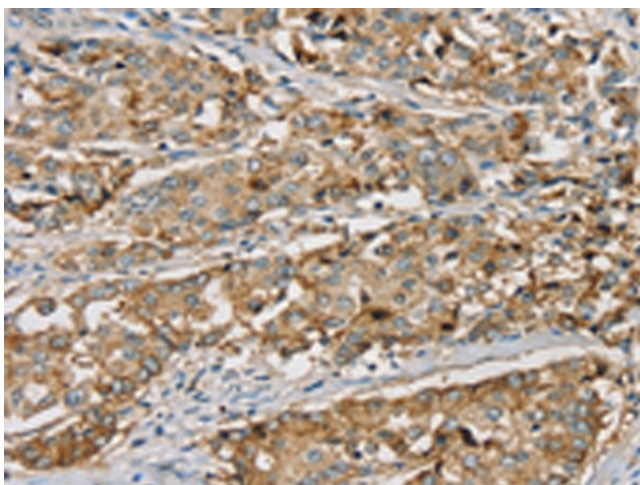
Product Type:	Primary Antibodies
Applications:	IHC
Recommended Dilution:	IHC: 25-100 Positive control: Human liver cancer Predicted cell location: Cytoplasm or Cell membrane
Reactivity:	Human, Mouse
Host:	Rabbit
Isotype:	IgG
Clonality:	Polyclonal
Immunogen:	Synthetic peptide of human SEMA6A
Formulation:	pH7.4 PBS, 0.05% NaN ₃ , 40% Glycerol
Concentration:	lot specific
Purification:	Antigen affinity purification
Conjugation:	Unconjugated
Storage:	Store at -20°C as received.
Stability:	Stable for 12 months from date of receipt.
Gene Name:	semaphorin 6A
Database Link:	NP_065847 Entrez Gene 20358 Mouse Entrez Gene 57556 Human Q9H2E6
Background:	The transmembrane semaphorin SEMA6A is expressed in developing neural tissue and is required for proper development of the thalamocortical projection. Cell surface receptor for PLXNA2 that plays an important role in cell-cell signaling. Required for normal granule cell migration in the developing cerebellum. Promotes reorganization of the actin cytoskeleton and plays an important role in axon guidance in the developing central nervous system.
Synonyms:	HT018; SEMA; SEMA6A1; SEMAQ; VIA
Protein Families:	Transmembrane



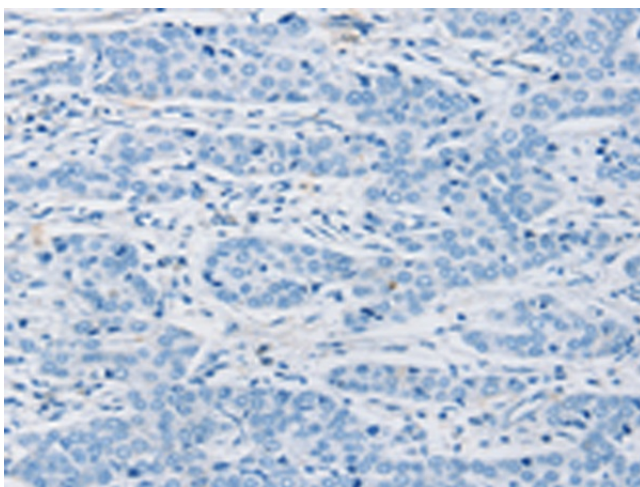
[View online »](#)

Protein Pathways: Axon guidance

Product images:



Immunohistochemistry of paraffin-embedded Human liver cancer tissue using TA351643 (SEMA6A Antibody) at dilution 1/20 (Original magnification: $\times 200$)



Immunohistochemistry of paraffin-embedded Human liver cancer tissue using TA351643 (SEMA6A Antibody) at dilution 1/20, treated with synthetic peptide. (Original magnification: $\times 200$)