

## Product datasheet for **TA351640S**

### SEC14 like protein 2 (SEC14L2) Rabbit Polyclonal Antibody

#### Product data:

Product Type:	Primary Antibodies
Applications:	IHC, WB
Recommended Dilution:	WB: 500-2000 WB positive control: Mouse liver tissue and PC3 cells, human fetal liver tissue IHC: 25-100 Positive control: Human liver cancer Predicted cell location: Cytoplasm
Reactivity:	Human, Mouse
Host:	Rabbit
Isotype:	IgG
Clonality:	Polyclonal
Immunogen:	Synthetic peptide of human SEC14L2
Formulation:	pH7.4 PBS, 0.05% NaN <sub>3</sub> , 40% Glycerol
Purification:	Antigen affinity purification
Conjugation:	Unconjugated
Storage:	Store at -20°C as received.
Stability:	Stable for 12 months from date of receipt.
Predicted Protein Size:	46 kDa
Gene Name:	SEC14 like lipid binding 2
Database Link:	<a href="#">NP_036561</a> <a href="#">Entrez Gene 67815 Mouse</a> <a href="#">Entrez Gene 23541 Human</a> <a href="#">O76054</a>

**Background:** This gene encodes a cytosolic protein which belongs to a family of lipid-binding proteins including Sec14p, alpha-tocopherol transfer protein, and cellular retinol-binding protein. The encoded protein stimulates squalene monooxygenase which is a downstream enzyme in the cholesterol biosynthetic pathway. Alternatively spliced transcript variants encoding different isoforms have been identified for this gene.

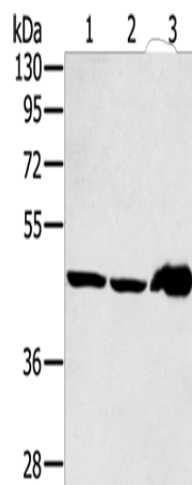
**Synonyms:** C22orf6; SPF; TAP; TAP1



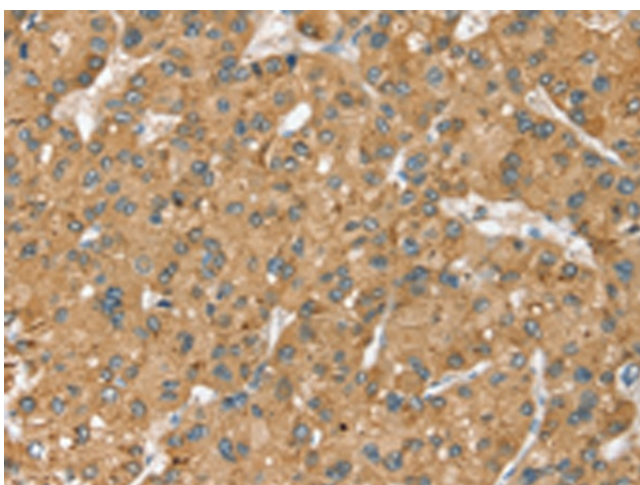
[View online »](#)

Protein Families: Transcription Factors

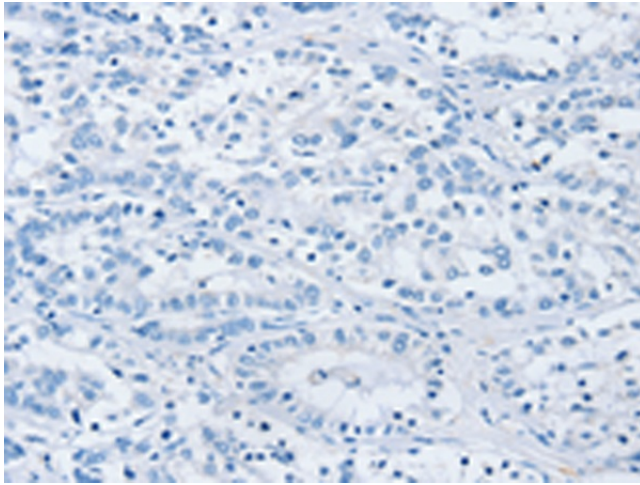
### Product images:



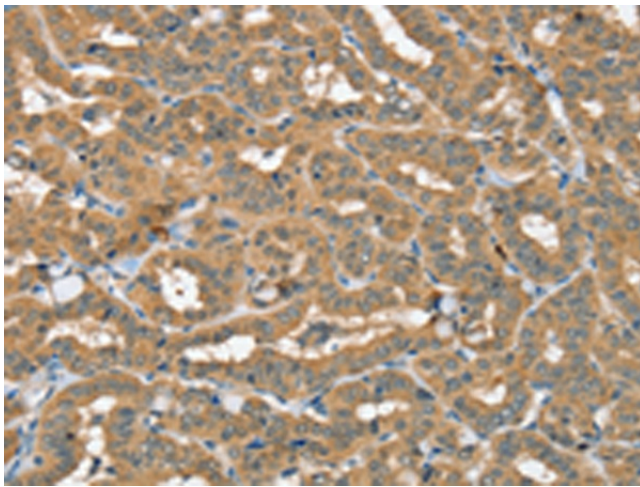
Gel: 8%SDS-PAGE  
Lysate: 40  $\mu$ g  
Lane 1-3: Mouse liver tissue  
PC3 cells  
human fetal liver tissue  
Primary antibody: [TA351640] (SEC14L2 Antibody)  
at dilution 1/400  
Secondary antibody: Goat anti rabbit IgG at  
1/8000 dilution  
Exposure time: 2 minutes



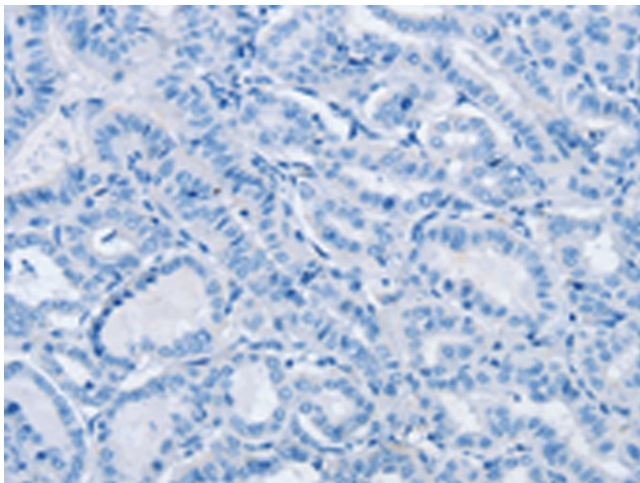
Immunohistochemistry of paraffin-embedded  
Human liver cancer tissue using [TA351640]  
(SEC14L2 Antibody) at dilution 1/40 (Original  
magnification:  $\times$ 200)



Immunohistochemistry of paraffin-embedded Human liver cancer tissue using [TA351640] (SEC14L2 Antibody) at dilution 1/40, treated with synthetic peptide. (Original magnification: ×200)



Immunohistochemistry of paraffin-embedded Human thyroid cancer tissue using [TA351640] (SEC14L2 Antibody) at dilution 1/40 (Original magnification: ×200)



Immunohistochemistry of paraffin-embedded Human thyroid cancer tissue using [TA351640] (SEC14L2 Antibody) at dilution 1/40, treated with synthetic peptide. (Original magnification: ×200)