

Product datasheet for **TA351637S**

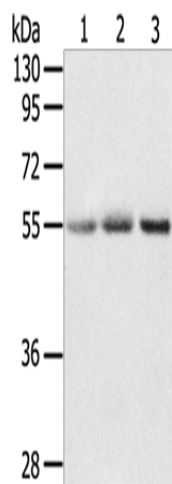
SDCCAG10 (CWC27) Rabbit Polyclonal Antibody

Product data:

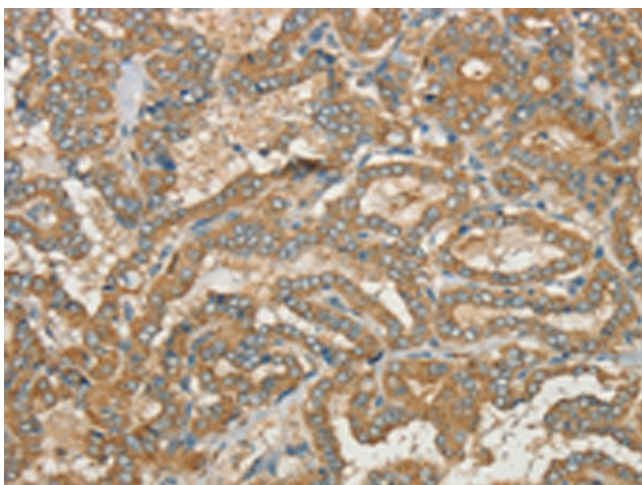
Product Type:	Primary Antibodies
Applications:	IHC, WB
Recommended Dilution:	WB: 200-1000 WB positive control: Human liver cancer and normal colon tissue, human placenta tissue IHC: 25-100 Positive control: Human thyroid cancer Predicted cell location: Cytoplasm
Reactivity:	Human, Mouse, Rat
Host:	Rabbit
Isotype:	IgG
Clonality:	Polyclonal
Immunogen:	Synthetic peptide of human CWC27
Formulation:	pH7.4 PBS, 0.05% NaN ₃ , 40% Glycerol
Purification:	Antigen affinity purification
Conjugation:	Unconjugated
Storage:	Store at -20°C as received.
Stability:	Stable for 12 months from date of receipt.
Predicted Protein Size:	54 kDa
Gene Name:	CWC27 spliceosome associated protein homolog
Database Link:	NP_001284573 Entrez Gene 10283 Human Q6UX04
Background:	CWC27 belongs to the cyclophilin-type PPIase family and contains 1 PPIase cyclophilin-type domain. There are two isoforms. PPIases accelerate the folding of proteins.
Synonyms:	NY-CO-10; SDCCAG10



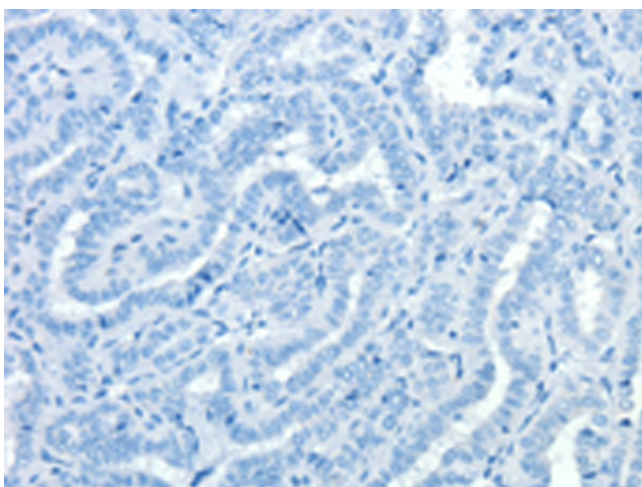
[View online »](#)

Product images:

Gel: 8%SDS-PAGE
Lysate: 40 µg
Lane 1-3: Human liver cancer tissue
Human normal colon tissue
human placenta tissue
Primary antibody: [TA351637] (CWC27 Antibody)
at dilution 1/200
Secondary antibody: Goat anti rabbit IgG at
1/8000 dilution
Exposure time: 5 minutes



Immunohistochemistry of paraffin-embedded
Human thyroid cancer tissue using [TA351637]
(CWC27 Antibody) at dilution 1/40 (Original
magnification: ×200)



Immunohistochemistry of paraffin-embedded Human thyroid cancer tissue using [TA351637] (CWC27 Antibody) at dilution 1/40, treated with synthetic peptide. (Original magnification: ×200)