

## Product datasheet for **TA351637**

### SDCCAG10 (CWC27) Rabbit Polyclonal Antibody

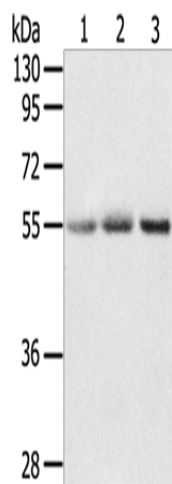
#### Product data:

Product Type:	Primary Antibodies
Applications:	IHC, WB
Recommended Dilution:	WB: 200-1000 WB positive control: Human liver cancer and normal colon tissue, human placenta tissue IHC: 25-100 Positive control: Human thyroid cancer Predicted cell location: Cytoplasm
Reactivity:	Human, Mouse, Rat
Host:	Rabbit
Isotype:	IgG
Clonality:	Polyclonal
Immunogen:	Synthetic peptide of human CWC27
Formulation:	pH7.4 PBS, 0.05% NaN <sub>3</sub> , 40% Glycerol
Concentration:	lot specific
Purification:	Antigen affinity purification
Conjugation:	Unconjugated
Storage:	Store at -20°C as received.
Stability:	Stable for 12 months from date of receipt.
Predicted Protein Size:	54 kDa
Gene Name:	CWC27 spliceosome associated protein homolog
Database Link:	<a href="#">NP_001284573</a> <a href="#">Entrez Gene 10283 Human</a> <a href="#">Q6UX04</a>
Background:	CWC27 belongs to the cyclophilin-type PPIase family and contains 1 PPIase cyclophilin-type domain. There are two isoforms. PPIases accelerate the folding of proteins.
Synonyms:	NY-CO-10; SDCCAG10

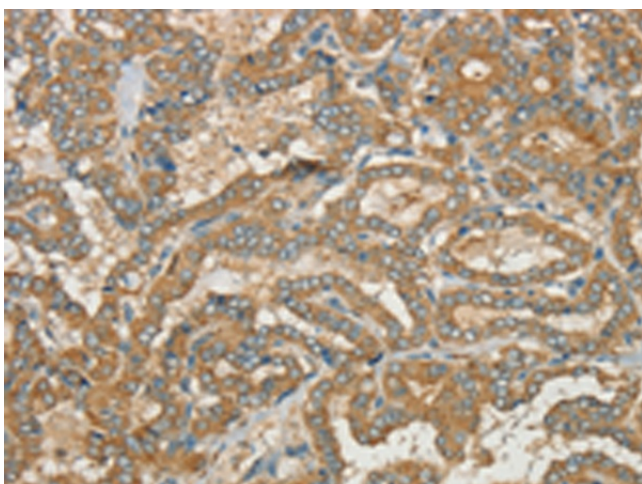


[View online »](#)

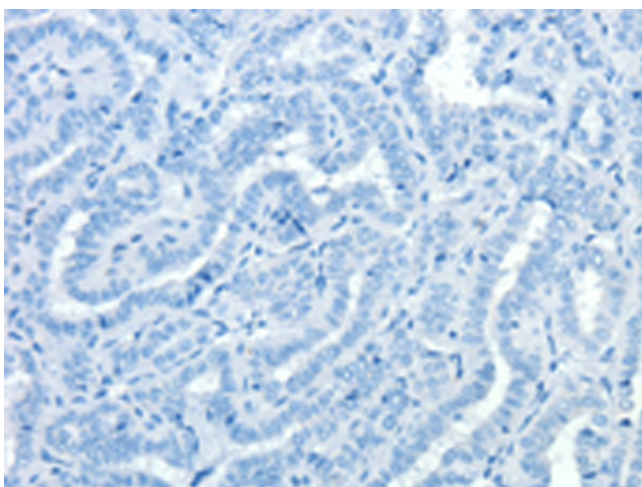
## Product images:



Gel: 8%SDS-PAGE  
Lysate: 40  $\mu$ g  
Lane 1-3: Human liver cancer tissue  
Human normal colon tissue  
human placenta tissue  
Primary antibody: TA351637 (CWC27 Antibody) at dilution 1/200  
Secondary antibody: Goat anti rabbit IgG at 1/8000 dilution  
Exposure time: 5 minutes



Immunohistochemistry of paraffin-embedded Human thyroid cancer tissue using TA351637 (CWC27 Antibody) at dilution 1/40 (Original magnification:  $\times$ 200)



Immunohistochemistry of paraffin-embedded Human thyroid cancer tissue using TA351637 (CWC27 Antibody) at dilution 1/40, treated with synthetic peptide. (Original magnification:  $\times 200$ )