

## Product datasheet for **TA351636S**

### SCP3 (SYCP3) Rabbit Polyclonal Antibody

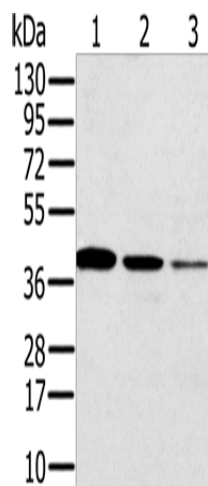
#### Product data:

Product Type:	Primary Antibodies
Applications:	IHC, WB
Recommended Dilution:	WB: 200-1000 WB positive control: Jurkat cells and human seminoma tissue, human liver cancer tissue IHC: 25-100 Positive control: Human liver cancer Predicted cell location: Nucleus or Cytoplasm
Reactivity:	Human, Mouse, Rat
Host:	Rabbit
Isotype:	IgG
Clonality:	Polyclonal
Immunogen:	Synthetic peptide of human SYCP3
Formulation:	pH7.4 PBS, 0.05% NaN <sub>3</sub> , 40% Glycerol
Purification:	Antigen affinity purification
Conjugation:	Unconjugated
Storage:	Store at -20°C as received.
Stability:	Stable for 12 months from date of receipt.
Predicted Protein Size:	28 kDa
Gene Name:	synaptonemal complex protein 3
Database Link:	<a href="#">NP_710161</a> <a href="#">Entrez Gene 20962 Mouse</a> <a href="#">Entrez Gene 25561 Rat</a> <a href="#">Entrez Gene 50511 Human</a> <a href="#">Q8IZU3</a>
Background:	This gene encodes an essential structural component of the synaptonemal complex. This complex is involved in synapsis, recombination and segregation of meiotic chromosomes. Mutations in this gene are associated with azoospermia in males and susceptibility to pregnancy loss in females. Alternate splicing results in multiple transcript variants that encode the same protein.
Synonyms:	COR1; SCP3; SPGF4

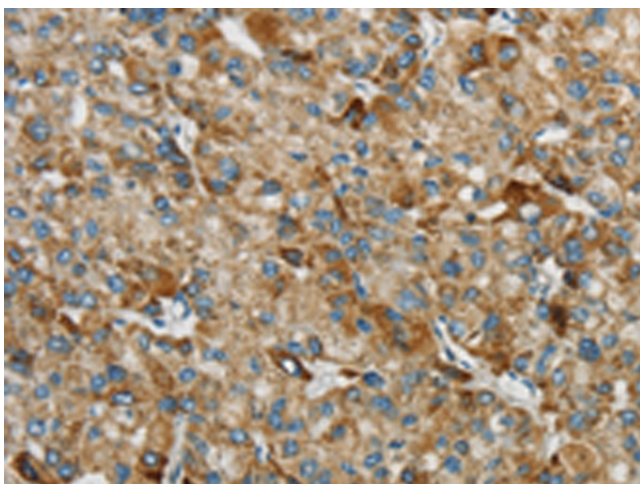


[View online »](#)

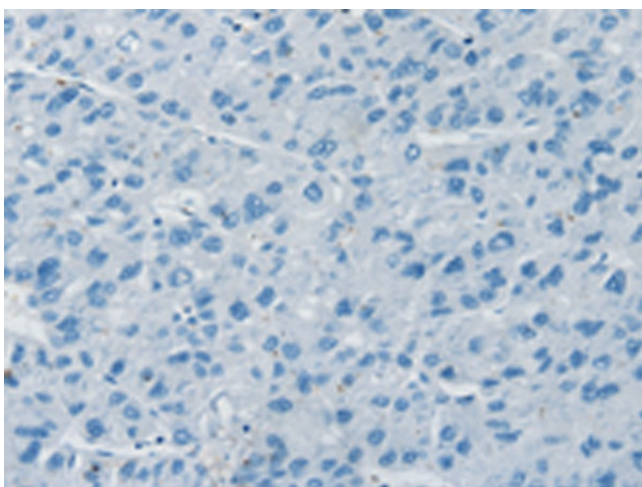
## Product images:



Gel: 12%SDS-PAGE  
Lysate: 40  $\mu$ g  
Lane 1-3: Jurkat cells  
human seminoma tissue  
human liver cancer tissue  
Primary antibody: [TA351636] (SYCP3 Antibody)  
at dilution 1/200  
Secondary antibody: Goat anti rabbit IgG at  
1/8000 dilution  
Exposure time: 40 seconds



Immunohistochemistry of paraffin-embedded  
Human liver cancer tissue using [TA351636]  
(SYCP3 Antibody) at dilution 1/25 (Original  
magnification:  $\times 200$ )



Immunohistochemistry of paraffin-embedded Human liver cancer tissue using [TA351636] (SYCP3 Antibody) at dilution 1/25, treated with synthetic peptide. (Original magnification:  $\times 200$ )