

Product datasheet for **TA351636**

SCP3 (SYCP3) Rabbit Polyclonal Antibody

Product data:

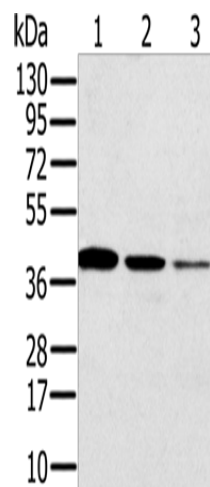
Product Type:	Primary Antibodies
Applications:	IHC, WB
Recommended Dilution:	WB: 200-1000 WB positive control: Jurkat cells and human seminoma tissue, human liver cancer tissue IHC: 25-100 Positive control: Human liver cancer Predicted cell location: Nucleus or Cytoplasm
Reactivity:	Human, Mouse, Rat
Host:	Rabbit
Isotype:	IgG
Clonality:	Polyclonal
Immunogen:	Synthetic peptide of human SYCP3
Formulation:	pH7.4 PBS, 0.05% NaN ₃ , 40% Glycerol
Concentration:	lot specific
Purification:	Antigen affinity purification
Conjugation:	Unconjugated
Storage:	Store at -20°C as received.
Stability:	Stable for 12 months from date of receipt.
Predicted Protein Size:	28 kDa
Gene Name:	synaptonemal complex protein 3
Database Link:	NP_710161 Entrez Gene 20962 Mouse Entrez Gene 25561 Rat Entrez Gene 50511 Human Q8IZU3
Background:	This gene encodes an essential structural component of the synaptonemal complex. This complex is involved in synapsis, recombination and segregation of meiotic chromosomes. Mutations in this gene are associated with azoospermia in males and susceptibility to pregnancy loss in females. Alternate splicing results in multiple transcript variants that encode the same protein.



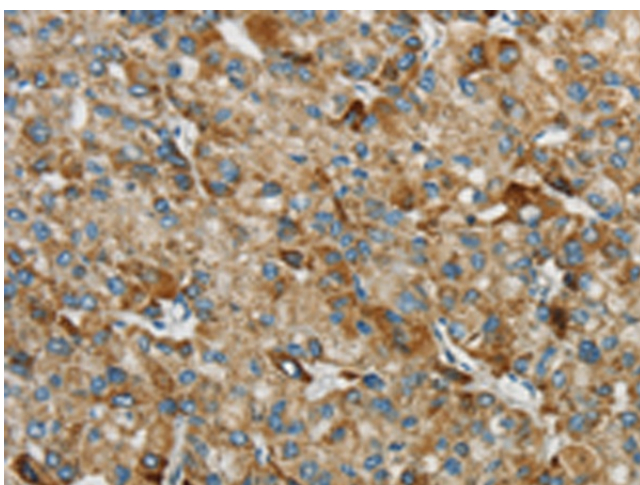
[View online »](#)

Synonyms: COR1; SCP3; SPGF4

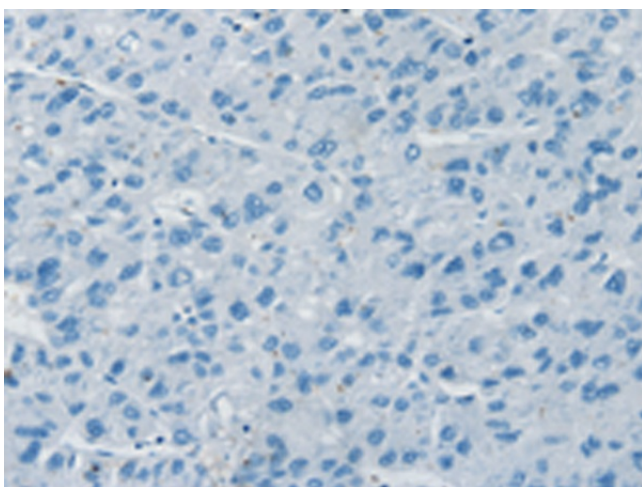
Product images:



Gel: 12%SDS-PAGE
Lysate: 40 µg
Lane 1-3: Jurkat cells
human seminoma tissue
human liver cancer tissue
Primary antibody: TA351636 (SYCP3 Antibody) at
dilution 1/200
Secondary antibody: Goat anti rabbit IgG at
1/8000 dilution
Exposure time: 40 seconds



Immunohistochemistry of paraffin-embedded
Human liver cancer tissue using TA351636
(SYCP3 Antibody) at dilution 1/25 (Original
magnification: ×200)



Immunohistochemistry of paraffin-embedded Human liver cancer tissue using TA351636 (SYCP3 Antibody) at dilution 1/25, treated with synthetic peptide. (Original magnification: ×200)