

## Product datasheet for **TA351635**

### SCP1 (SYCP1) Rabbit Polyclonal Antibody

#### Product data:

Product Type:	Primary Antibodies
Applications:	IHC
Recommended Dilution:	IHC: 25-100 Positive control: Human colon cancer Predicted cell location: Nucleus
Reactivity:	Human
Host:	Rabbit
Isotype:	IgG
Clonality:	Polyclonal
Immunogen:	Synthetic peptide of human SYCP1
Formulation:	pH7.4 PBS, 0.05% NaN <sub>3</sub> , 40% Glycerol
Concentration:	lot specific
Purification:	Antigen affinity purification
Conjugation:	Unconjugated
Storage:	Store at -20°C as received.
Stability:	Stable for 12 months from date of receipt.
Gene Name:	synaptonemal complex protein 1
Database Link:	<a href="#">NP_003167</a> <a href="#">Entrez Gene 6847 Human</a> <a href="#">Q15431</a>

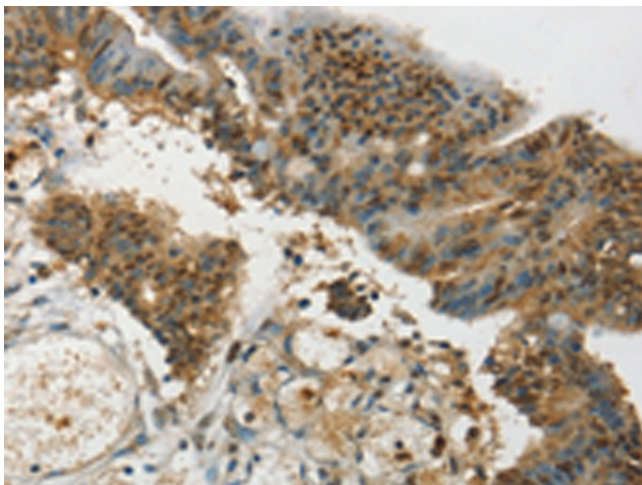
**Background:** The synaptonemal complex protein 1 (SCP-1), also known as SYCP1(A), SYN1(I) and HOM-TES-14, is a protein product of human chromosome 1p13-p12. SCP-1 is a major component of the transverse filaments of synaptonemal complexes and functions by pairing homologous chromosomes during meiotic prophase in spermatocytes, which is an essential step for the generation of haploid cells in meiosis I. SCP-1 is expressed in the testis, adult brain, some malignant gliomas, breast, renal cell and ovarian cancer. SCP-1 is known to be selectively expressed during the meiotic prophase of spermatocytes and shows cell cycle phase-independent nuclear expression in cancer cells.



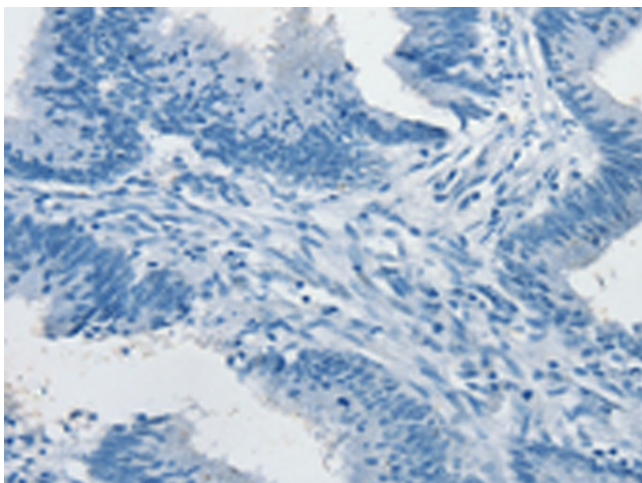
[View online »](#)

Synonyms: CT8; HOM-TES-14; SCP-1; SCP1

### Product images:



Immunohistochemistry of paraffin-embedded Human colon cancer tissue using TA351635 (SYCP1 Antibody) at dilution 1/35 (Original magnification:  $\times 200$ )



Immunohistochemistry of paraffin-embedded Human colon cancer tissue using TA351635 (SYCP1 Antibody) at dilution 1/35, treated with synthetic peptide. (Original magnification:  $\times 200$ )