

## Product datasheet for **TA351629S**

### Ly6a Rabbit Polyclonal Antibody

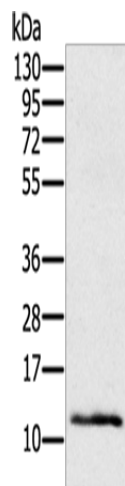
#### Product data:

Product Type:	Primary Antibodies
Applications:	WB
Recommended Dilution:	WB: 200-1000 WB positive control: Mouse skin tissue
Reactivity:	Mouse
Host:	Rabbit
Isotype:	IgG
Clonality:	Polyclonal
Immunogen:	Synthetic peptide of mouse Ly6a
Formulation:	pH7.4 PBS, 0.05% NaN <sub>3</sub> , 40% Glycerol
Purification:	Antigen affinity purification
Conjugation:	Unconjugated
Storage:	Store at -20°C as received.
Stability:	Stable for 12 months from date of receipt.
Predicted Protein Size:	14 kDa
Gene Name:	lymphocyte antigen 6 complex, locus A
Database Link:	<a href="#">NP_001258375</a> <a href="#">Entrez Gene 110454 Mouse P05533</a>
Background:	Sca-1 is an 18 kDa phosphatidylinositol-anchored protein that is a member of the lymphocyte antigen 6 (Ly-6) family. Sca-1 is encoded by the strain-specific Ly-6 E/A allelic gene. Its expression on multipotent hematopoietic stem cells (HSC) has been used as a marker of HSCs in mice of both Ly-6 haplotypes. Sca-1-positive HSCs can be found in the adult bone marrow, fetal liver, and mobilized peripheral blood and spleen in the adult animal.
Synonyms:	Ly-6A.2; Ly-6A/E; Ly-6E.1; Sca-1; Sca1; TAP



[View online »](#)

## Product images:



Gel: 12%SDS-PAGE  
Lysate: 40  $\mu$ g  
Lane: Mouse skin tissue  
Primary antibody: [TA351629] (Ly6a Antibody) at dilution 1/200  
Secondary antibody: Goat anti rabbit IgG at 1/8000 dilution  
Exposure time: 2 minutes