

Product datasheet for **TA351629**

Ly6a Rabbit Polyclonal Antibody

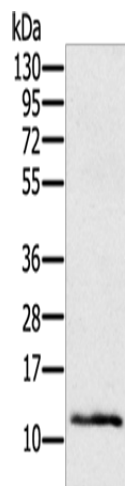
Product data:

| | |
|-------------------------|--|
| Product Type: | Primary Antibodies |
| Applications: | WB |
| Recommended Dilution: | WB: 200-1000 WB positive control: Mouse skin tissue |
| Reactivity: | Mouse |
| Host: | Rabbit |
| Isotype: | IgG |
| Clonality: | Polyclonal |
| Immunogen: | Synthetic peptide of mouse Ly6a |
| Formulation: | pH7.4 PBS, 0.05% NaN ₃ , 40% Glycerol |
| Concentration: | lot specific |
| Purification: | Antigen affinity purification |
| Conjugation: | Unconjugated |
| Storage: | Store at -20°C as received. |
| Stability: | Stable for 12 months from date of receipt. |
| Predicted Protein Size: | 14 kDa |
| Gene Name: | lymphocyte antigen 6 complex, locus A |
| Database Link: | NP_001258375 Entrez Gene 110454 Mouse P05533 |
| Background: | Sca-1 is an 18 kDa phosphatidylinositol-anchored protein that is a member of the lymphocyte antigen 6 (Ly-6) family. Sca-1 is encoded by the strain-specific Ly-6 E/A allelic gene. Its expression on multipotent hematopoietic stem cells (HSC) has been used as a marker of HSCs in mice of both Ly-6 haplotypes. Sca-1-positive HSCs can be found in the adult bone marrow, fetal liver, and mobilized peripheral blood and spleen in the adult animal. |
| Synonyms: | Ly-6A.2; Ly-6A/E; Ly-6E.1; Sca-1; Sca1; TAP |



[View online »](#)

Product images:



Gel: 12%SDS-PAGE
Lysate: 40 μ g
Lane: Mouse skin tissue
Primary antibody: TA351629 (Ly6a Antibody) at dilution 1/200
Secondary antibody: Goat anti rabbit IgG at 1/8000 dilution
Exposure time: 2 minutes