

Product datasheet for **TA351623**

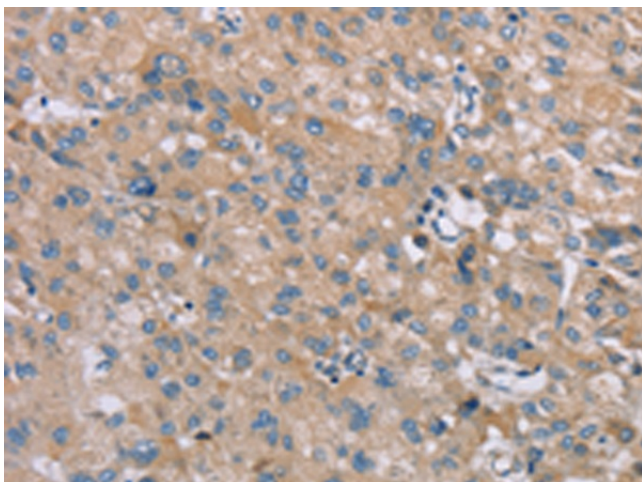
SAMD9 Rabbit Polyclonal Antibody

Product data:

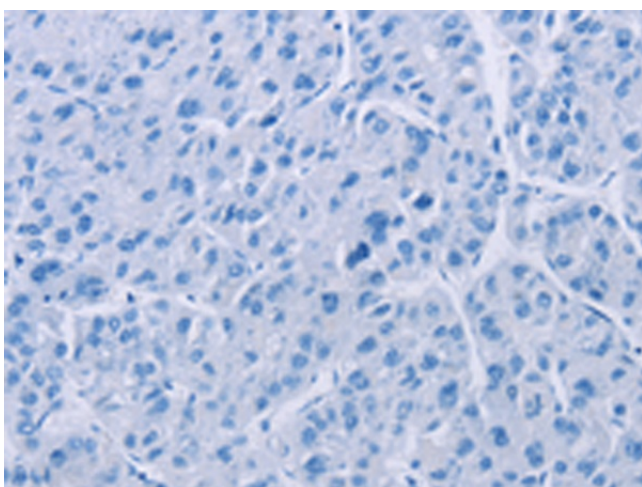
Product Type:	Primary Antibodies
Applications:	IHC
Recommended Dilution:	IHC: 25-100 Positive control: Human liver cancer Predicted cell location: Cytoplasm
Reactivity:	Human
Host:	Rabbit
Isotype:	IgG
Clonality:	Polyclonal
Immunogen:	Synthetic peptide of human SAMD9
Formulation:	pH7.4 PBS, 0.05% NaN ₃ , 40% Glycerol
Concentration:	lot specific
Purification:	Antigen affinity purification
Conjugation:	Unconjugated
Storage:	Store at -20°C as received.
Stability:	Stable for 12 months from date of receipt.
Gene Name:	sterile alpha motif domain containing 9
Database Link:	NP_060124 Entrez Gene 54809 Human Q5K651
Background:	This gene encodes a sterile alpha motif domain-containing protein. The encoded protein localizes to the cytoplasm and may play a role in regulating cell proliferation and apoptosis. Mutations in this gene are the cause of normophosphatemic familial tumoral calcinosis. Alternate splicing results in multiple transcript variants that encode the same protein.
Synonyms:	C7orf5; DRIF1; MIRAGE; NFTC; OEF1; OEF2



[View online »](#)

Product images:

Immunohistochemistry of paraffin-embedded Human liver cancer tissue using TA351623 (SAMD9 Antibody) at dilution 1/35 (Original magnification: $\times 200$)



Immunohistochemistry of paraffin-embedded Human liver cancer tissue using TA351623 (SAMD9 Antibody) at dilution 1/35, treated with synthetic peptide. (Original magnification: $\times 200$)