

Product datasheet for **TA351618**

S100 Calcium Binding Protein A13 (S100A13) Rabbit Polyclonal Antibody

Product data:

Product Type:	Primary Antibodies
Applications:	WB
Recommended Dilution:	ELISA: 2000-5000, WB: 500-2000
Reactivity:	Human
Host:	Rabbit
Isotype:	IgG
Clonality:	Polyclonal
Immunogen:	Synthetic peptide of human S100A13
Formulation:	pH7.4 PBS, 0.05% NaN ₃ , 40% Glycerol
Concentration:	lot specific
Purification:	Antigen affinity purification
Conjugation:	Unconjugated
Storage:	Store at -20°C as received.
Stability:	Stable for 12 months from date of receipt.
Predicted Protein Size:	11 kDa
Gene Name:	S100 calcium binding protein A13
Database Link:	NP_005970 Entrez Gene 6284 Human Q99584

Background: The protein encoded by this gene is a member of the S100 family of proteins containing 2 EF-hand calcium-binding motifs. S100 proteins are localized in the cytoplasm and/or nucleus of a wide range of cells, and involved in the regulation of a number of cellular processes such as cell cycle progression and differentiation. S100 genes include at least 13 members which are located as a cluster on chromosome 1q21. This protein is widely expressed in various types of tissues with a high expression level in thyroid gland.

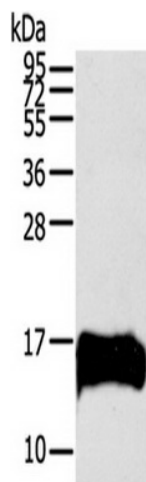
Synonyms: OTTHUMP00000034802; S100 calcium-binding protein A13; S100 calcium binding protein A13

Protein Families: Druggable Genome



[View online »](#)

Product images:



Gel: 12%SDS-PAGE, Lysate: 40 ug, Primary antibody: (S100A13 Antibody) at dilution 1/200 dilution, Secondary antibody: Goat anti rabbit IgG at 1/8000 dilution, Exposure time: 2 minutes