

## Product datasheet for **TA351617**

### Ryanodine Receptor (RYR1) Rabbit Polyclonal Antibody

#### Product data:

Product Type:	Primary Antibodies
Applications:	WB
Recommended Dilution:	WB: 200-1000 WB positive control: Mouse brain tissue
Reactivity:	Human, Mouse, Rat
Host:	Rabbit
Isotype:	IgG
Clonality:	Polyclonal
Immunogen:	Synthetic peptide of human RYR1
Formulation:	pH7.4 PBS, 0.05% NaN <sub>3</sub> , 40% Glycerol
Concentration:	lot specific
Purification:	Antigen affinity purification
Conjugation:	Unconjugated
Storage:	Store at -20°C as received.
Stability:	Stable for 12 months from date of receipt.
Predicted Protein Size:	565 kDa
Gene Name:	ryanodine receptor 1
Database Link:	<a href="#">NP_000531</a> <a href="#">Entrez Gene 20190 MouseEntrez Gene 114207 RatEntrez Gene 6261 Human P21817</a>

**Background:** This gene encodes a ryanodine receptor found in skeletal muscle. The encoded protein functions as a calcium release channel in the sarcoplasmic reticulum but also serves to connect the sarcoplasmic reticulum and transverse tubule. Mutations in this gene are associated with malignant hyperthermia susceptibility, central core disease, and minicore myopathy with external ophthalmoplegia. Alternatively spliced transcripts encoding different isoforms have been described.

**Synonyms:** CCO; MHS; MHS1; PPP1R137; RYDR; RYR; RYR-1; SKRR

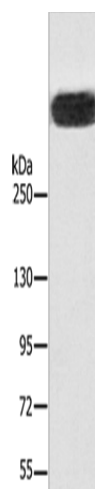


[View online »](#)

Protein Families: Druggable Genome, Transmembrane

Protein Pathways: Calcium signaling pathway, Long-term depression

### Product images:



Gel: 6%SDS-PAGE

Lysate: 40  $\mu$ g

Lane: Mouse brain tissue

Primary antibody: TA351617 (RYR1 Antibody) at dilution 1/400

Secondary antibody: Goat anti rabbit IgG at 1/8000 dilution

Exposure time: 2 minutes