

## Product datasheet for **TA351611S**

### RRAS Rabbit Polyclonal Antibody

#### Product data:

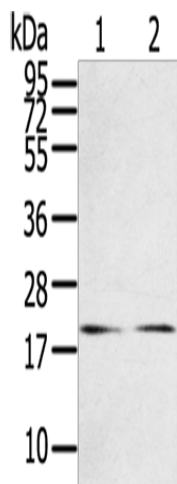
Product Type:	Primary Antibodies
Applications:	IHC, WB
Recommended Dilution:	WB: 200-1000 WB positive control: Human chromaffin cells tumor tissue and NIH/3T3 cells IHC: 25-100 Positive control: Human liver cancer Predicted cell location: Cytoplasm
Reactivity:	Human, Mouse, Rat
Host:	Rabbit
Isotype:	IgG
Clonality:	Polyclonal
Immunogen:	Synthetic peptide of human RRAS
Formulation:	pH7.4 PBS, 0.05% NaN <sub>3</sub> , 40% Glycerol
Purification:	Antigen affinity purification
Conjugation:	Unconjugated
Storage:	Store at -20°C as received.
Stability:	Stable for 12 months from date of receipt.
Predicted Protein Size:	23 kDa
Gene Name:	related RAS viral (r-ras) oncogene homolog
Database Link:	<a href="#">NP_006261</a> <a href="#">Entrez Gene 361568 RatEntrez Gene 6237 Human P10301</a>
Background:	Ras-related protein R-Ras is a protein that in humans is encoded by the RRAS gene. RRAS has been shown to interact with RASSF5, NCK1, Bcl-2, ARAF and RALGDS. Regulates the organization of the actin cytoskeleton. Interacts with PLCE1. Interacts (active GTP-bound form preferentially) with RGS14.
Synonyms:	Oncogene RRAS; related RAS viral (r-ras) oncogene homolog
Protein Families:	Druggable Genome



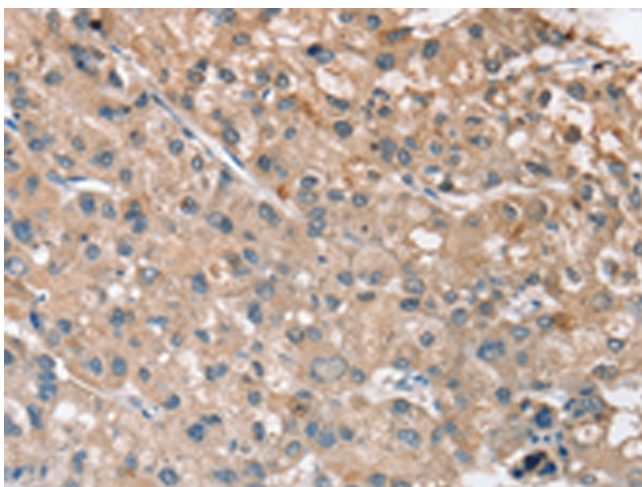
[View online »](#)

Protein Pathways: MAPK signaling pathway, Regulation of actin cytoskeleton, Tight junction

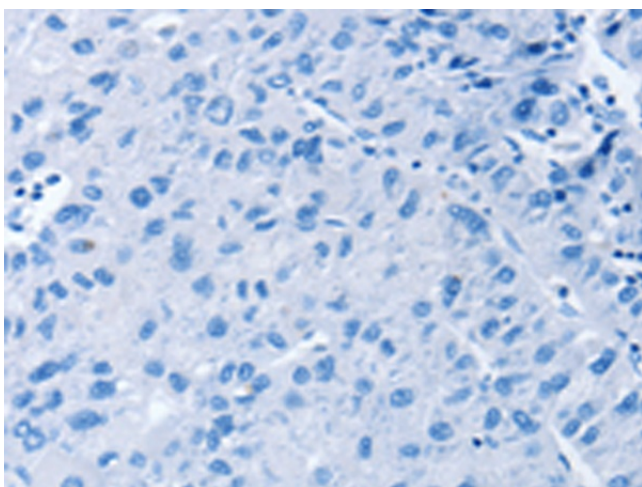
### Product images:



Gel: 12%SDS-PAGE  
Lysate: 40  $\mu$ g  
Lane 1-2: Human chromaffin cell tumor tissue  
NIH/3T3 cells  
Primary antibody: [TA351611] (RRAS Antibody) at  
dilution 1/200  
Secondary antibody: Goat anti rabbit IgG at  
1/8000 dilution  
Exposure time: 2 minutes



Immunohistochemistry of paraffin-embedded  
Human liver cancer tissue using [TA351611]  
(RRAS Antibody) at dilution 1/30 (Original  
magnification:  $\times$ 200)



Immunohistochemistry of paraffin-embedded Human liver cancer tissue using [TA351611] (RRAS Antibody) at dilution 1/30, treated with synthetic peptide. (Original magnification: ×200)