

Product datasheet for **TA351611**

RRAS Rabbit Polyclonal Antibody

Product data:

Product Type:	Primary Antibodies
Applications:	IHC, WB
Recommended Dilution:	WB: 200-1000 WB positive control: Human chromaffin cells tumor tissue and NIH/3T3 cells IHC: 25-100 Positive control: Human liver cancer Predicted cell location: Cytoplasm
Reactivity:	Human, Mouse, Rat
Host:	Rabbit
Isotype:	IgG
Clonality:	Polyclonal
Immunogen:	Synthetic peptide of human RRAS
Formulation:	pH7.4 PBS, 0.05% NaN ₃ , 40% Glycerol
Concentration:	lot specific
Purification:	Antigen affinity purification
Conjugation:	Unconjugated
Storage:	Store at -20°C as received.
Stability:	Stable for 12 months from date of receipt.
Predicted Protein Size:	23 kDa
Gene Name:	related RAS viral (r-ras) oncogene homolog
Database Link:	NP_006261 Entrez Gene 361568 Rat Entrez Gene 6237 Human P10301
Background:	Ras-related protein R-Ras is a protein that in humans is encoded by the RRAS gene. RRAS has been shown to interact with RASSF5, NCK1, Bcl-2, ARAF and RALGDS. Regulates the organization of the actin cytoskeleton. Interacts with PLCE1. Interacts (active GTP-bound form preferentially) with RGS14.
Synonyms:	Oncogene RRAS; related RAS viral (r-ras) oncogene homolog

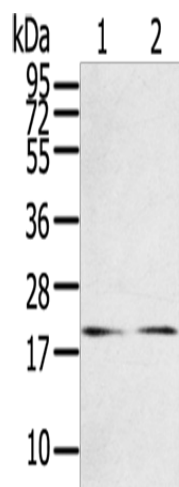


[View online »](#)

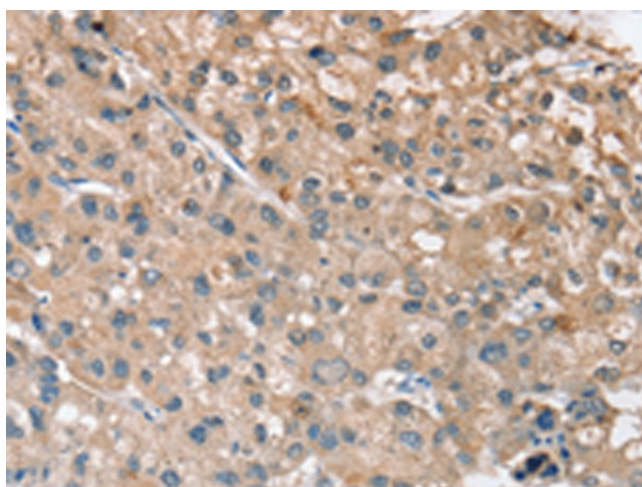
Protein Families: Druggable Genome

Protein Pathways: MAPK signaling pathway, Regulation of actin cytoskeleton, Tight junction

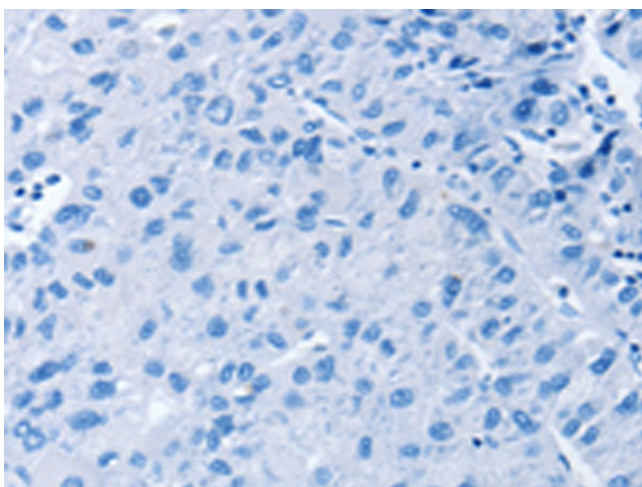
Product images:



Gel: 12%SDS-PAGE
Lysate: 40 µg
Lane 1-2: Human chromaffin cell tumor tissue
NIH/3T3 cells
Primary antibody: TA351611 (RRAS Antibody) at
dilution 1/200
Secondary antibody: Goat anti rabbit IgG at
1/8000 dilution
Exposure time: 2 minutes



Immunohistochemistry of paraffin-embedded
Human liver cancer tissue using TA351611 (RRAS
Antibody) at dilution 1/30 (Original magnification:
×200)



Immunohistochemistry of paraffin-embedded Human liver cancer tissue using TA351611 (RRAS Antibody) at dilution 1/30, treated with synthetic peptide. (Original magnification: x200)