

## Product datasheet for **TA351601S**

### RNF122 Rabbit Polyclonal Antibody

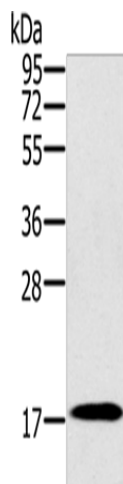
#### Product data:

Product Type:	Primary Antibodies
Applications:	WB
Recommended Dilution:	WB: 500-2000 WB positive control: Mouse heart tissue
Reactivity:	Human, Mouse
Host:	Rabbit
Isotype:	IgG
Clonality:	Polyclonal
Immunogen:	Synthetic peptide of human RNF122
Formulation:	pH7.4 PBS, 0.05% NaN <sub>3</sub> , 40% Glycerol
Purification:	Antigen affinity purification
Conjugation:	Unconjugated
Storage:	Store at -20°C as received.
Stability:	Stable for 12 months from date of receipt.
Predicted Protein Size:	17 kDa
Gene Name:	ring finger protein 122
Database Link:	<a href="#">NP_079063</a> <a href="#">Entrez Gene 79845 Human</a> <a href="#">Q9H9V4</a>
Background:	The encoded protein contains a RING finger, a motif present in a variety of functionally distinct proteins and known to be involved in protein-protein and protein-DNA interactions. The encoded protein is localized to the endoplasmic reticulum and golgi apparatus, and may be associated with cell viability.
Synonyms:	FLJ12526; MGC126622
Protein Families:	Druggable Genome, Transmembrane



[View online »](#)

## Product images:



Gel: 10%SDS-PAGE

Lysate: 40  $\mu$ g

Lane: Mouse heart tissue

Primary antibody: [TA351601] (RNF122 Antibody)  
at dilution 1/300

Secondary antibody: Goat anti rabbit IgG at  
1/8000 dilution

Exposure time: 1 minute