

Product datasheet for **TA351600**

KCNJ15 Rabbit Polyclonal Antibody

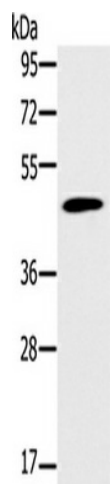
Product data:

Product Type:	Primary Antibodies
Applications:	IHC, WB
Recommended Dilution:	ELISA: 2000-5000, WB: 500-2000, IHC: 25-100
Reactivity:	Human, Mouse, Rat
Host:	Rabbit
Isotype:	IgG
Clonality:	Polyclonal
Immunogen:	Synthetic peptide of human KCNJ15
Formulation:	pH7.4 PBS, 0.05% NaN ₃ , 40% Glycerol
Concentration:	lot specific
Purification:	Antigen affinity purification
Conjugation:	Unconjugated
Storage:	Store at -20°C as received.
Stability:	Stable for 12 months from date of receipt.
Predicted Protein Size:	43 kDa
Gene Name:	potassium voltage-gated channel subfamily J member 15
Database Link:	NP_733932 Entrez Gene 3772 Human Q99712
Background:	Potassium channels are present in most mammalian cells, where they participate in a wide range of physiologic responses. The protein encoded by this gene is an integral membrane protein and inward-rectifier type potassium channel. The encoded protein has a greater tendency to allow potassium to flow into a cell rather than out of a cell. Eight transcript variants encoding the same protein have been found for this gene.
Synonyms:	IRKK; KIR1.3; KIR4.2
Protein Families:	Druggable Genome, Ion Channels: Potassium, Transmembrane

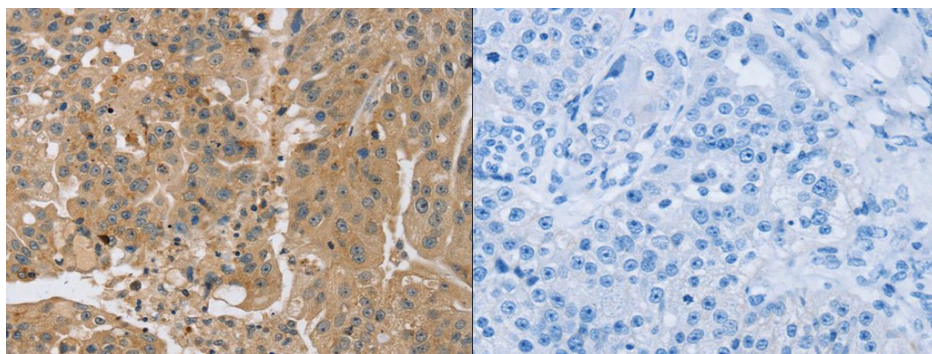


[View online »](#)

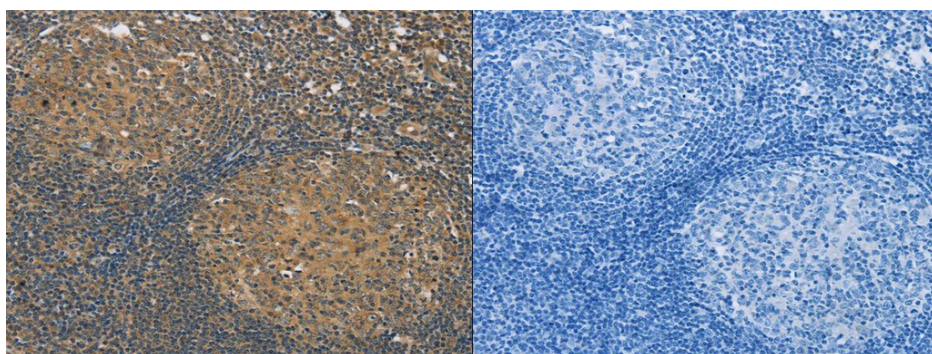
Product images:



Gel: 8%SDS-PAGE, Lysate: 40 ug, Lane: Mouse pancreas tissue, Primary antibody: (KCNJ15 Antibody) at dilution 1/200, Secondary antibody: Goat anti rabbit IgG at 1/8000 dilution, Exposure time: 30 seconds



The image on the left is immunohistochemistry of paraffin-embedded Human breast cancer tissue using (KCNJ15 Antibody) at dilution 1/35, on the right is treated with synthetic peptide. (Original magnification: $\times 200$)



The image on the left is immunohistochemistry of paraffin-embedded Human tonsil tissue using (KCNJ15 Antibody) at dilution 1/35, on the right is treated with synthetic peptide. (Original magnification: $\times 200$)