

## Product datasheet for **TA351598**

### SLC39A7 Rabbit Polyclonal Antibody

#### Product data:

Product Type:	Primary Antibodies
Applications:	IHC, WB
Recommended Dilution:	WB: 200-1000 WB positive control: Huvec and 293T cells IHC: 25-100 Positive control: Human thyroid cancer Predicted cell location: Cytoplasm
Reactivity:	Human
Host:	Rabbit
Isotype:	IgG
Clonality:	Polyclonal
Immunogen:	Synthetic peptide of human SLC39A7
Formulation:	pH7.4 PBS, 0.05% NaN <sub>3</sub> , 40% Glycerol
Concentration:	lot specific
Purification:	Antigen affinity purification
Conjugation:	Unconjugated
Storage:	Store at -20°C as received.
Stability:	Stable for 12 months from date of receipt.
Predicted Protein Size:	50 kDa
Gene Name:	solute carrier family 39 member 7
Database Link:	<a href="#">NP_008910</a> <a href="#">Entrez Gene 7922 Human</a> <a href="#">Q92504</a>

**Background:** The protein encoded by this gene transports zinc from the Golgi and endoplasmic reticulum to the cytoplasm. This transport may be important for activation of tyrosine kinases, some of which could be involved in cancer progression. Therefore, modulation of the encoded protein could be useful as a therapeutic agent against cancer. Alternative splicing results in multiple transcript variants.

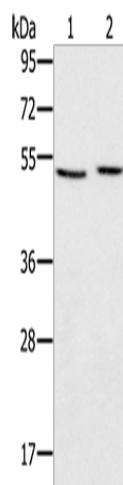


[View online »](#)

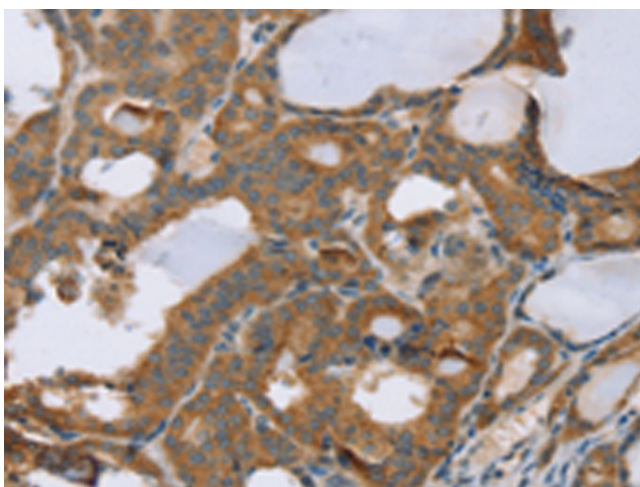
**Synonyms:** D6S115E; D6S2244E; H2-KE4; HKE4; KE4; RING5; ZIP7

**Protein Families:** Transmembrane

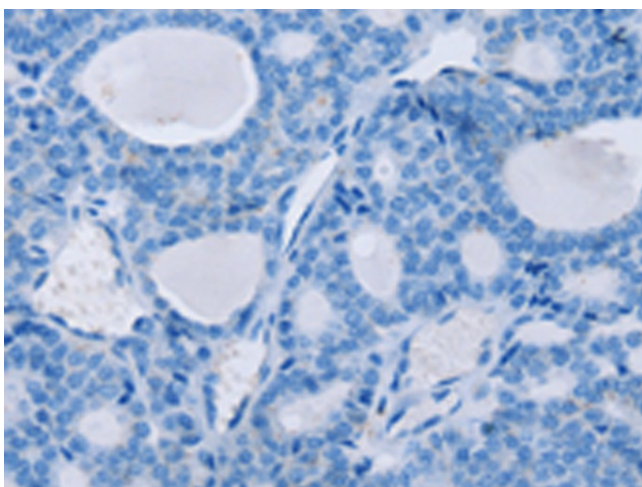
**Product images:**



Gel: 8%SDS-PAGE  
Lysate: 40  $\mu$ g  
Lane 1-2: Huvec cells  
293T cells  
Primary antibody: TA351598 (SLC39A7 Antibody)  
at dilution 1/200  
Secondary antibody: Goat anti rabbit IgG at  
1/8000 dilution  
Exposure time: 20 seconds



Immunohistochemistry of paraffin-embedded  
Human thyroid cancer tissue using TA351598  
(SLC39A7 Antibody) at dilution 1/40 (Original  
magnification:  $\times 200$ )



Immunohistochemistry of paraffin-embedded Human thyroid cancer tissue using TA351598 (SLC39A7 Antibody) at dilution 1/40, treated with synthetic peptide. (Original magnification:  $\times 200$ )