

Product datasheet for **TA351597S**

RNF5 Rabbit Polyclonal Antibody

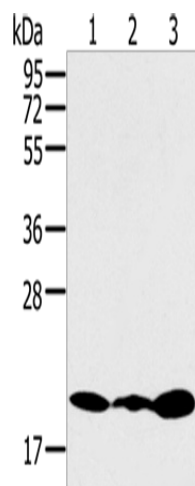
Product data:

Product Type:	Primary Antibodies
Applications:	IHC, WB
Recommended Dilution:	WB: 500-2000 WB positive control: Jurkat, 231 and K562 cells IHC: 25-100 Positive control: Human thyroid cancer Predicted cell location: Cytoplasm
Reactivity:	Human, Mouse, Rat
Host:	Rabbit
Isotype:	IgG
Clonality:	Polyclonal
Immunogen:	Synthetic peptide of human RNF5
Formulation:	pH7.4 PBS, 0.05% NaN ₃ , 40% Glycerol
Purification:	Antigen affinity purification
Conjugation:	Unconjugated
Storage:	Store at -20°C as received.
Stability:	Stable for 12 months from date of receipt.
Predicted Protein Size:	20 kDa
Gene Name:	ring finger protein 5
Database Link:	NP_008844 Entrez Gene 54197 MouseEntrez Gene 407784 RatEntrez Gene 6048 Human Q99942
Background:	The protein encoded by this gene contains a RING finger, which is a motif known to be involved in protein-protein interactions. This protein is a membrane-bound ubiquitin ligase. It can regulate cell motility by targeting paxillin ubiquitination and altering the distribution and localization of paxillin in cytoplasm and cell focal adhesions.
Synonyms:	RING5; RMA1
Protein Families:	Transmembrane

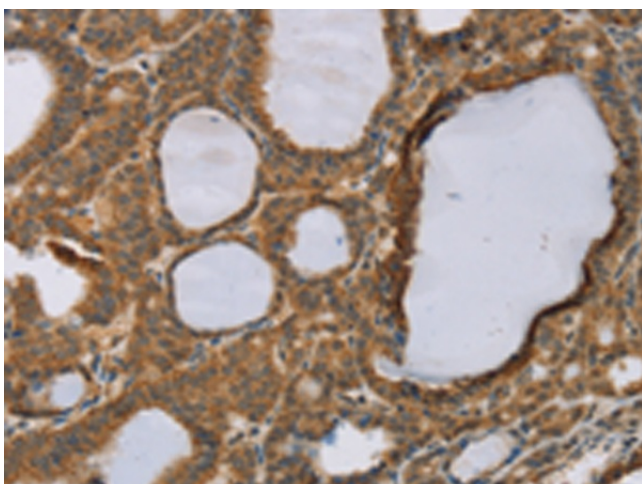


[View online »](#)

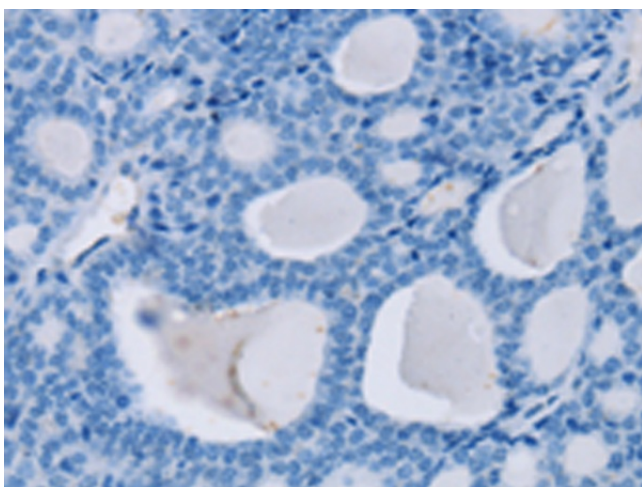
Product images:



Gel: 10%SDS-PAGE
Lysate: 40 μ g
Lane 1-3: Jurkat cells
231 cells
K562 cells
Primary antibody: [TA351597] (RNF5 Antibody) at dilution 1/200
Secondary antibody: Goat anti rabbit IgG at 1/8000 dilution
Exposure time: 3 minutes



Immunohistochemistry of paraffin-embedded Human thyroid cancer tissue using [TA351597] (RNF5 Antibody) at dilution 1/35 (Original magnification: \times 200)



Immunohistochemistry of paraffin-embedded Human thyroid cancer tissue using [TA351597] (RNF5 Antibody) at dilution 1/35, treated with synthetic peptide. (Original magnification: ×200)