

## Product datasheet for **TA351596S**

### RHCG Rabbit Polyclonal Antibody

#### Product data:

Product Type:	Primary Antibodies
Applications:	IHC, WB
Recommended Dilution:	WB: 500-2000 WB positive control: Human 2-3 grade invasive ductal breast tissue lysate IHC: 25-50 Positive control: Human brain Predicted cell location: Cell membrane
Reactivity:	Human
Host:	Rabbit
Isotype:	IgG
Clonality:	Polyclonal
Immunogen:	Synthetic peptide of human RHCG
Formulation:	pH7.4 PBS, 0.05% NaN <sub>3</sub> , 40% Glycerol
Purification:	Antigen affinity purification
Conjugation:	Unconjugated
Storage:	Store at -20°C as received.
Stability:	Stable for 12 months from date of receipt.
Predicted Protein Size:	53 kDa
Gene Name:	Rh family C glycoprotein
Database Link:	<a href="#">NP_057405</a> <a href="#">Entrez Gene 51458 Human</a> <a href="#">Q9UBD6</a>



[View online »](#)

**Background:**

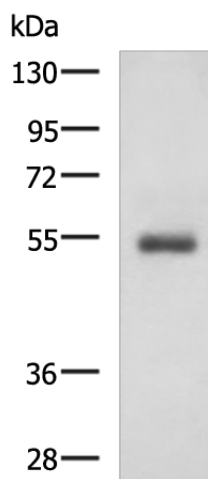
RHCG (Rhesus blood group family type C glycoprotein), also known as RHGK (Rh glycoprotein kidney), PDRC2 (tumor-related protein DRC2) or SLC42A3, is a multi-pass membrane protein with three potential N-glycosylation sites that belongs to the Rh subfamily of the ammonium transporter family. Expressed in a wide variety of tissues with predominant expression in adult and fetal kidney, RHCG localizes to the apical and/or basolateral cell membrane (depending on the species) and is believed to function as a non-erythroid, bidirectional, electroneutral ammonium transporter.

**Synonyms:**

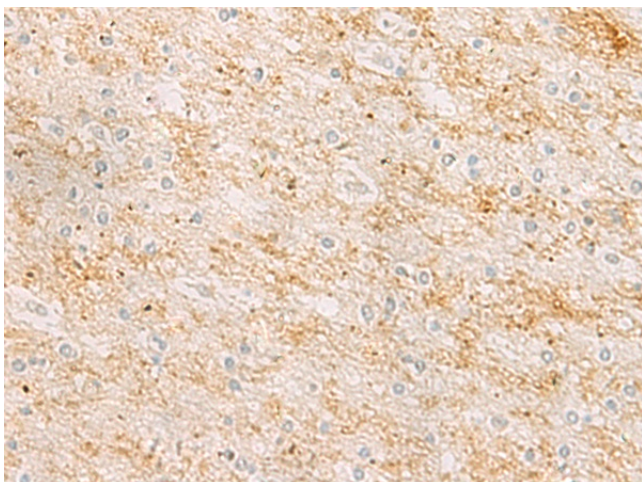
C15orf6; PDRC2; RHGK; SLC42A3

**Protein Families:**

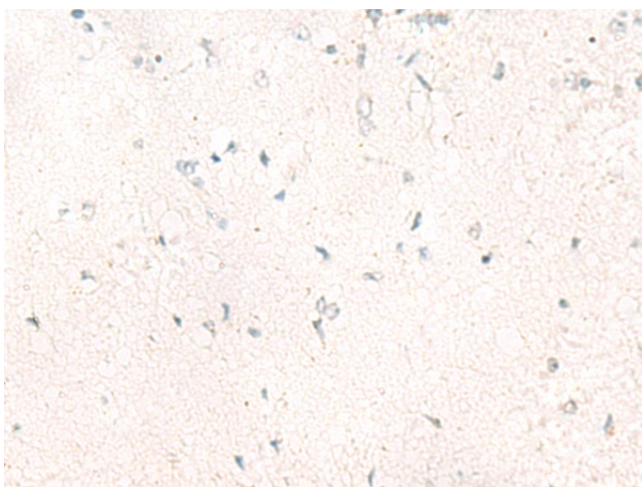
Transmembrane

**Product images:**

Gel: 8%SDS-PAGE  
Lysate: 40  $\mu$ g  
Lane: Human 2-3 grade invasive ductal breast tissue lysate  
Primary antibody: [TA351596] (RHCG Antibody) at dilution 1/600  
Secondary antibody: Goat anti rabbit IgG at 1/5000 dilution  
Exposure time: 5 minutes



Immunohistochemistry of paraffin-embedded Human brain tissue using [TA351596] (RHCG Antibody) at dilution 1/25 (Original magnification:  $\times$ 200)



Immunohistochemistry of paraffin-embedded Human brain tissue using [TA351596] (RHCG Antibody) at dilution 1/25, treated with synthetic peptide. (Original magnification:  $\times 200$ )