

Product datasheet for **TA351596**

RHCG Rabbit Polyclonal Antibody

Product data:

Product Type:	Primary Antibodies
Applications:	IHC, WB
Recommended Dilution:	WB: 500-2000 WB positive control: Human 2-3 grade invasive ductal breast tissue lysate IHC: 25-50 Positive control: Human brain Predicted cell location: Cell membrane
Reactivity:	Human
Host:	Rabbit
Isotype:	IgG
Clonality:	Polyclonal
Immunogen:	Synthetic peptide of human RHCG
Formulation:	pH7.4 PBS, 0.05% NaN ₃ , 40% Glycerol
Concentration:	lot specific
Purification:	Antigen affinity purification
Conjugation:	Unconjugated
Storage:	Store at -20°C as received.
Stability:	Stable for 12 months from date of receipt.
Predicted Protein Size:	53 kDa
Gene Name:	Rh family C glycoprotein
Database Link:	NP_057405 Entrez Gene 51458 Human Q9UBD6



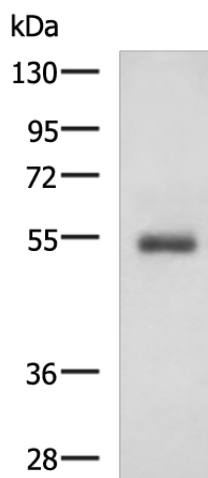
[View online »](#)

Background: RHCG (Rhesus blood group family type C glycoprotein), also known as RHGK (Rh glycoprotein kidney), PDRC2 (tumor-related protein DRC2) or SLC42A3, is a multi-pass membrane protein with three potential N-glycosylation sites that belongs to the Rh subfamily of the ammonium transporter family. Expressed in a wide variety of tissues with predominant expression in adult and fetal kidney, RHCG localizes to the apical and/or basolateral cell membrane (depending on the species) and is believed to function as a non-erythroid, bidirectional, electroneutral ammonium transporter.

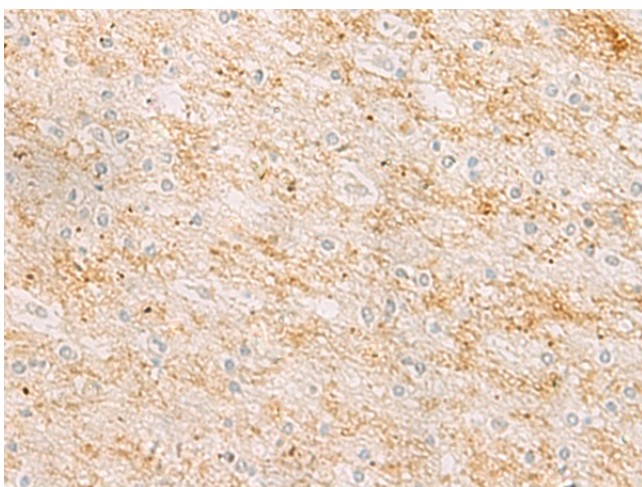
Synonyms: C15orf6; PDRC2; RHGK; SLC42A3

Protein Families: Transmembrane

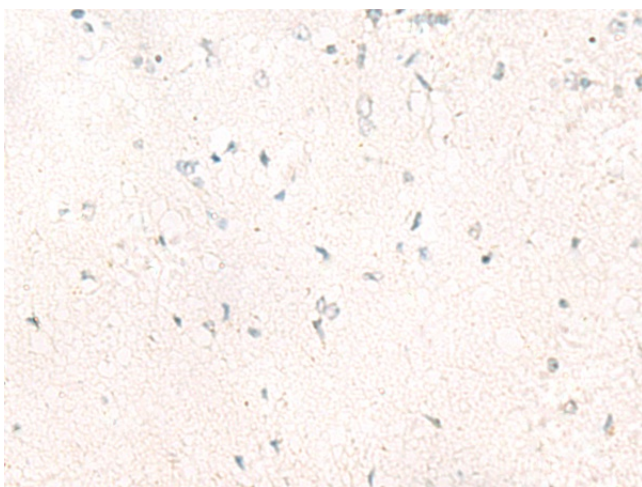
Product images:



Gel: 8%SDS-PAGE
Lysate: 40 μ g
Lane: Human 2-3 grade invasive ductal breast tissue lysate
Primary antibody: TA351596 (RHCG Antibody) at dilution 1/600
Secondary antibody: Goat anti rabbit IgG at 1/5000 dilution
Exposure time: 5 minutes



Immunohistochemistry of paraffin-embedded Human brain tissue using TA351596 (RHCG Antibody) at dilution 1/25 (Original magnification: \times 200)



Immunohistochemistry of paraffin-embedded Human brain tissue using TA351596 (RHCG Antibody) at dilution 1/25, treated with synthetic peptide. (Original magnification: $\times 200$)