

## Product datasheet for **TA351592S**

### Renalase (RNLS) Rabbit Polyclonal Antibody

#### Product data:

Product Type:	Primary Antibodies
Applications:	IHC, WB
Recommended Dilution:	WB: 500-2000 WB positive control: K562 cell, Human cerebella tissue lysates IHC: 50-200 Positive control: Human breast cancer Predicted cell location: Secreted
Reactivity:	Human, Mouse, Rat
Host:	Rabbit
Isotype:	IgG
Clonality:	Polyclonal
Immunogen:	Synthetic peptide of human RNLS
Formulation:	pH7.4 PBS, 0.05% NaN <sub>3</sub> , 40% Glycerol
Purification:	Antigen affinity purification
Conjugation:	Unconjugated
Storage:	Store at -20°C as received.
Stability:	Stable for 12 months from date of receipt.
Predicted Protein Size:	38 kDa
Gene Name:	renalase, FAD-dependent amine oxidase
Database Link:	<a href="#">NP_001026879</a> <a href="#">Entrez Gene 67795 MouseEntrez Gene 361751 RatEntrez Gene 55328 Human Q5VYX0</a>



[View online »](#)

**Background:**

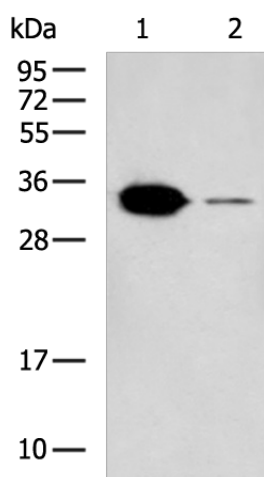
Renalase is a flavin adenine dinucleotide-dependent amine oxidase that is secreted into the blood from the kidney. Catalyzes the oxidation of the less abundant alpha-NAD(P)H isoform to form beta-NAD(P)<sup>+</sup>. The enzyme hormone is secreted by the kidney, and circulates in blood and modulates cardiac function and systemic blood pressure. Lowers blood pressure in vivo by decreasing cardiac contractility and heart rate and preventing a compensatory increase in peripheral vascular tone, suggesting a causal link to the increased plasma catecholamine and heightened cardiovascular risk.

**Synonyms:**

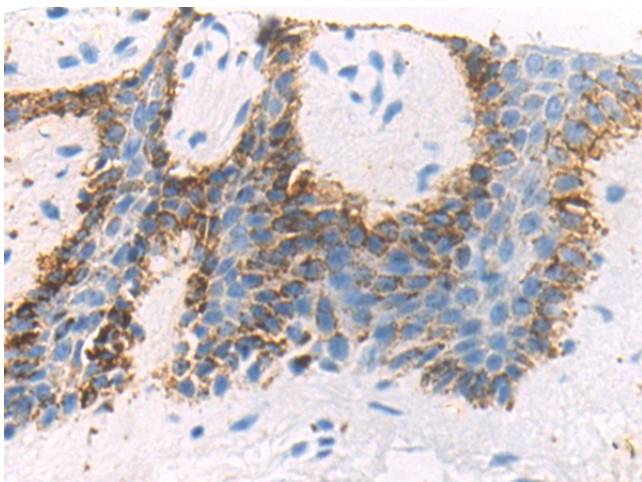
C10orf59; RENALASE

**Protein Families:**

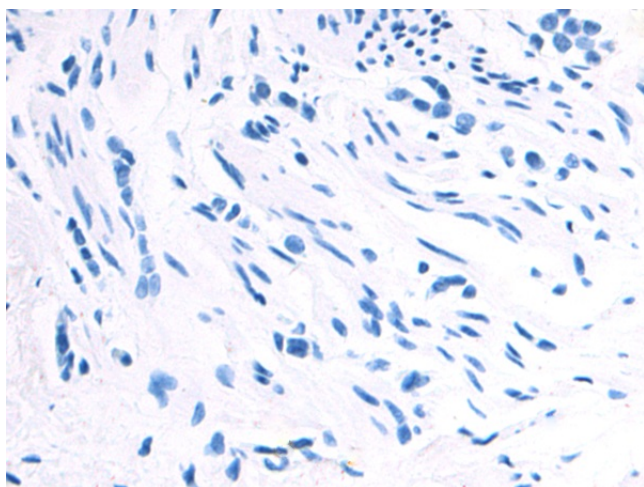
Secreted Protein

**Product images:**

Gel: 12%SDS-PAGE  
Lysate: 40 µg  
Lane 1-2: K562 cell  
Human cerebella tissue lysates  
Primary antibody: [TA351592] (RNLS Antibody) at dilution 1/500  
Secondary antibody: Goat anti rabbit IgG at 1/5000 dilution  
Exposure time: 2 minutes



Immunohistochemistry of paraffin-embedded Human breast cancer tissue using [TA351592] (RNLS Antibody) at dilution 1/50 (Original magnification: ×200)



Immunohistochemistry of paraffin-embedded Human breast cancer tissue using [TA351592] (RNL5 Antibody) at dilution 1/50, treated with synthetic peptide. (Original magnification: ×200)