

Product datasheet for **TA351592**

Renalase (RNLS) Rabbit Polyclonal Antibody

Product data:

Product Type:	Primary Antibodies
Applications:	IHC, WB
Recommended Dilution:	WB: 500-2000 WB positive control: K562 cell, Human cerebella tissue lysates IHC: 50-200 Positive control: Human breast cancer Predicted cell location: Secreted
Reactivity:	Human, Mouse, Rat
Host:	Rabbit
Isotype:	IgG
Clonality:	Polyclonal
Immunogen:	Synthetic peptide of human RNLS
Formulation:	pH7.4 PBS, 0.05% NaN ₃ , 40% Glycerol
Concentration:	lot specific
Purification:	Antigen affinity purification
Conjugation:	Unconjugated
Storage:	Store at -20°C as received.
Stability:	Stable for 12 months from date of receipt.
Predicted Protein Size:	38 kDa
Gene Name:	renalase, FAD-dependent amine oxidase
Database Link:	NP_001026879 Entrez Gene 67795 Mouse Entrez Gene 361751 Rat Entrez Gene 55328 Human Q5VYX0



[View online »](#)

Background:

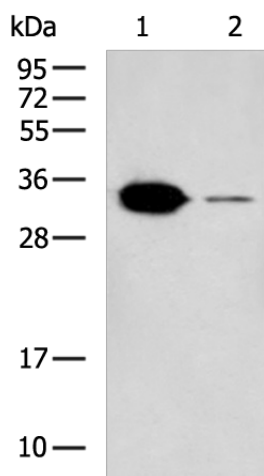
Renalase is a flavin adenine dinucleotide-dependent amine oxidase that is secreted into the blood from the kidney. Catalyzes the oxidation of the less abundant alpha-NAD(P)H isoform to form beta-NAD(P)⁺. The enzyme hormone is secreted by the kidney, and circulates in blood and modulates cardiac function and systemic blood pressure. Lowers blood pressure in vivo by decreasing cardiac contractility and heart rate and preventing a compensatory increase in peripheral vascular tone, suggesting a causal link to the increased plasma catecholamine and heightened cardiovascular risk.

Synonyms:

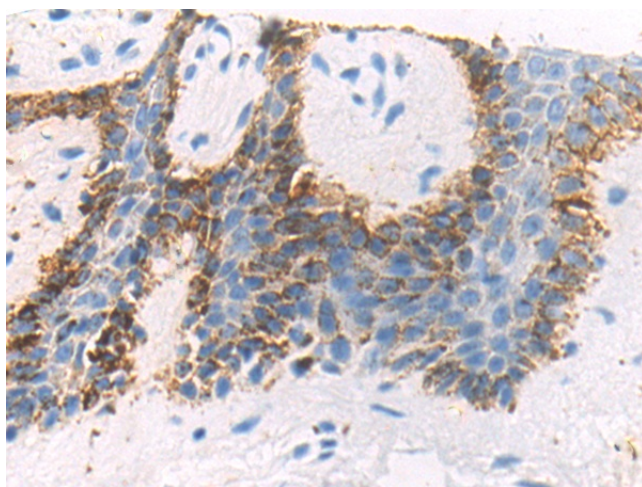
C10orf59; RENALASE

Protein Families:

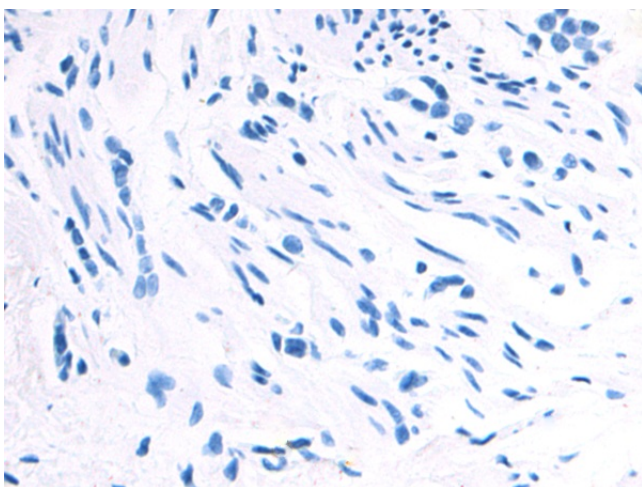
Secreted Protein

Product images:


Gel: 12%SDS-PAGE
 Lysate: 40 µg
 Lane 1-2: K562 cell
 Human cerebella tissue lysates
 Primary antibody: TA351592 (RNLS Antibody) at dilution 1/500
 Secondary antibody: Goat anti rabbit IgG at 1/5000 dilution
 Exposure time: 2 minutes



Immunohistochemistry of paraffin-embedded Human breast cancer tissue using TA351592 (RNLS Antibody) at dilution 1/50 (Original magnification: ×200)



Immunohistochemistry of paraffin-embedded Human breast cancer tissue using TA351592 (RNL5 Antibody) at dilution 1/50, treated with synthetic peptide. (Original magnification: ×200)