

## Product datasheet for **TA351590S**

### Rel B (RELB) Rabbit Polyclonal Antibody

#### Product data:

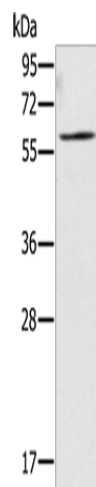
Product Type:	Primary Antibodies
Applications:	WB
Recommended Dilution:	WB: 200-1000 WB positive control: NIH/3T3 cells
Reactivity:	Human, Mouse
Host:	Rabbit
Isotype:	IgG
Clonality:	Polyclonal
Immunogen:	Synthetic peptide of human RELB
Formulation:	pH7.4 PBS, 0.05% NaN <sub>3</sub> , 40% Glycerol
Purification:	Antigen affinity purification
Conjugation:	Unconjugated
Storage:	Store at -20°C as received.
Stability:	Stable for 12 months from date of receipt.
Predicted Protein Size:	62 kDa
Gene Name:	RELB proto-oncogene, NF-kB subunit
Database Link:	<a href="#">NP_006500</a> <a href="#">Entrez Gene 19698 Mouse</a> <a href="#">Entrez Gene 5971 Human</a> <a href="#">Q01201</a>
Background:	Transcription factor RelB is a protein that in humans is encoded by the RELB gene. NF-kappa-B is a pleiotropic transcription factor which is present in almost all cell types and is involved in many biological processes such as inflammation, immunity, differentiation, cell growth, tumorigenesis and apoptosis. NF-kappa-B is a homo- or heterodimeric complex formed by the Rel-like domain-containing proteins RELA/p65, RELB, NFKB1/p105, NFKB1/p50, REL and NFKB2/p52.
Synonyms:	I-REL; IREL; REL-B
Protein Families:	Druggable Genome, Transcription Factors



[View online »](#)

Protein Pathways: MAPK signaling pathway

### Product images:



Gel: 8%SDS-PAGE  
Lysate: 40 µg  
Lane: NIH/3T3 cells  
Primary antibody: [TA351590] (RELB Antibody) at dilution 1/200  
Secondary antibody: Goat anti rabbit IgG at 1/8000 dilution  
Exposure time: 20 seconds