

## Product datasheet for **TA351589**

### RCC1 Rabbit Polyclonal Antibody

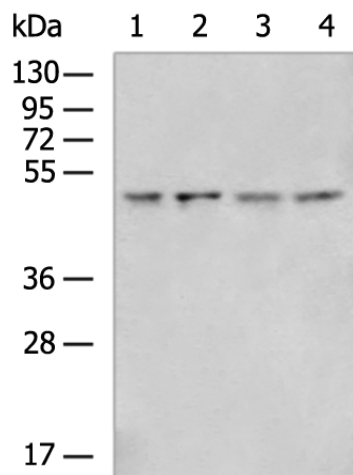
#### Product data:

Product Type:	Primary Antibodies
Applications:	WB
Recommended Dilution:	WB: 500-2000 WB positive control: Jurkat, 293T, CNE2 and HUVEC cell lysates
Reactivity:	Human, Mouse
Host:	Rabbit
Isotype:	IgG
Clonality:	Polyclonal
Immunogen:	Synthetic peptide of human RCC1
Formulation:	pH7.4 PBS, 0.05% NaN <sub>3</sub> , 40% Glycerol
Concentration:	lot specific
Purification:	Antigen affinity purification
Conjugation:	Unconjugated
Storage:	Store at -20°C as received.
Stability:	Stable for 12 months from date of receipt.
Predicted Protein Size:	45 kDa
Gene Name:	regulator of chromosome condensation 1
Database Link:	<a href="#">NP_001260</a> <a href="#">Entrez Gene 100088 Mouse</a> <a href="#">Entrez Gene 1104 Human</a> <a href="#">P18754</a>
Background:	RCC1 (regulator of chromosome condensation 1), increases the rate at which Ran exchanges GDP for GTP. Ran GAP1 opposes the effects of RCC1 by increasing the rate at which Ran hydrolyzes GTP to GDP. A protein designated Ran BP1 has no intrinsic GAP activity and functions as a GEF inhibitor, deactivating RCC1 and thereby indirectly increasing the ratio of Ran GDP to Ran GTP. Ran BP2 has been proposed as the Ran GTP docking site at the periphery of the nuclear pore complex.
Synonyms:	CHC1; RCC1-I; SNHG3-RCC1



[View online »](#)

## Product images:



Gel: 8%SDS-PAGE

Lysate: 40  $\mu$ g

Lane 1-4: Jurkat

293T

CNE2 and HUVEC cell lysates

Primary antibody: TA351589 (RCC1 Antibody) at dilution 1/300

Secondary antibody: Goat anti rabbit IgG at 1/5000 dilution

Exposure time: 45 seconds