

## Product datasheet for **TA351588**

### R Cadherin (CDH4) Rabbit Polyclonal Antibody

#### Product data:

Product Type:	Primary Antibodies
Applications:	WB
Recommended Dilution:	WB: 200-1000 WB positive control: 231 cells
Reactivity:	Human, Mouse
Host:	Rabbit
Isotype:	IgG
Clonality:	Polyclonal
Immunogen:	Synthetic peptide of human CDH4
Formulation:	pH7.4 PBS, 0.05% NaN <sub>3</sub> , 40% Glycerol
Concentration:	lot specific
Purification:	Antigen affinity purification
Conjugation:	Unconjugated
Storage:	Store at -20°C as received.
Stability:	Stable for 12 months from date of receipt.
Predicted Protein Size:	100 kDa
Gene Name:	cadherin 4
Database Link:	<a href="#">NP_001785</a> <a href="#">Entrez Gene 12561 Mouse</a> <a href="#">Entrez Gene 1002 Human</a> <a href="#">P55283</a>
Background:	This gene is a classical cadherin from the cadherin superfamily. The encoded protein is a calcium-dependent cell-cell adhesion glycoprotein comprised of five extracellular cadherin repeats, a transmembrane region and a highly conserved cytoplasmic tail. Based on studies in chicken and mouse, this cadherin is thought to play an important role during brain segmentation and neuronal outgrowth. In addition, a role in kidney and muscle development is indicated.
Synonyms:	CAD4; R-CAD; RCAD

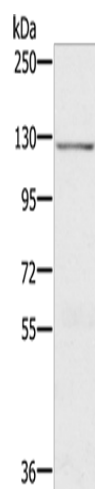


[View online »](#)

Protein Families: Transmembrane

Protein Pathways: Cell adhesion molecules (CAMs)

### Product images:



Gel: 6%SDS-PAGE

Lysate: 40  $\mu$ g

Lane: 231 cells

Primary antibody: TA351588 (CDH4 Antibody) at dilution 1/200

Secondary antibody: Goat anti rabbit IgG at 1/8000 dilution

Exposure time: 1 minute