

## Product datasheet for **TA351587S**

### **RBM38 Rabbit Polyclonal Antibody**

#### **Product data:**

Product Type:	Primary Antibodies
Applications:	IHC, WB
Recommended Dilution:	WB: 500-2000 WB positive control: Mouse liver tissue, 293T cell, K562 cell, Mouse heart tissue lysates IHC: 50-200 Positive control: Human liver cancer Predicted cell location: Cytoplasm
Reactivity:	Human, Mouse
Host:	Rabbit
Isotype:	IgG
Clonality:	Polyclonal
Immunogen:	Synthetic peptide of human RBM38
Formulation:	pH7.4 PBS, 0.05% NaN <sub>3</sub> , 40% Glycerol
Purification:	Antigen affinity purification
Conjugation:	Unconjugated
Storage:	Store at -20°C as received.
Stability:	Stable for 12 months from date of receipt.
Predicted Protein Size:	25 kDa
Gene Name:	RNA binding motif protein 38
Database Link:	<a href="#">NP_906270</a> <a href="#">Entrez Gene 56190 Mouse</a> <a href="#">Entrez Gene 55544 Human</a> <a href="#">Q9H0Z9</a>



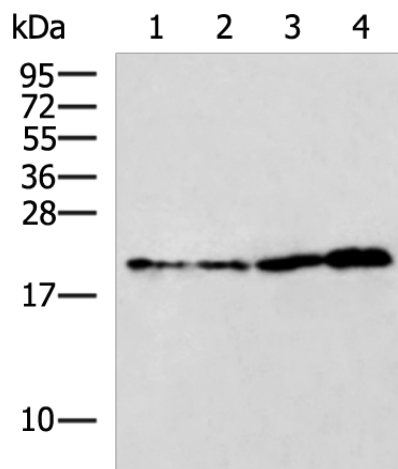
[View online »](#)

**Background:**

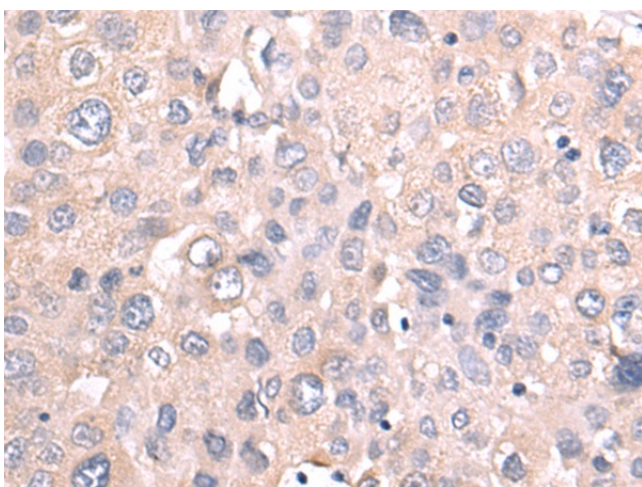
RBM38 (RNA-binding protein 38), also known as RNPC1 or SEB4. RBM38 is a cell cycle protein found in the cytosol and the Nucleus that exists as two alternatively spliced isoforms, 1 (RNPC1a) and 2 (RNPC1b), of 239 and 121 amino acids, respectively. Independent of p53 expression, RBM38 isoform 1 induces cell cycle arrest in G1 phase through maintaining transcript stability at the 3' UTR of p21, a regulator of cell cycle progression at S phase. RBM38 is also an mRNA splicing factor that regulates the expression of FGFR2. RBM38 contains one RRM (RNA recognition motif) domain.

**Synonyms:**

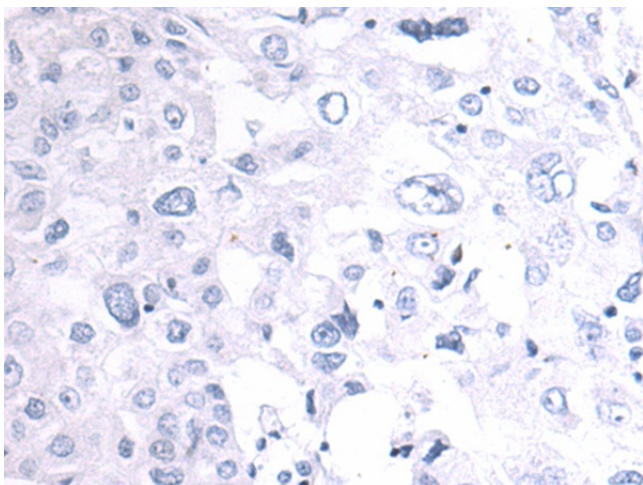
dj800j21.2; HSRNASEB; RNPC1; SEB4B; SEB4D

**Product images:**


Gel: 12%SDS-PAGE  
 Lysate: 40 µg  
 Lane 1-4: Mouse liver tissue  
 293T cell  
 K562 cell  
 Mouse heart tissue lysates  
 Primary antibody: [TA351587] (RBM38 Antibody)  
 at dilution 1/500  
 Secondary antibody: Goat anti rabbit IgG at  
 1/5000 dilution  
 Exposure time: 2 minutes



Immunohistochemistry of paraffin-embedded  
 Human liver cancer tissue using [TA351587]  
 (RBM38 Antibody) at dilution 1/50 (Original  
 magnification: ×200)



Immunohistochemistry of paraffin-embedded Human liver cancer tissue using [TA351587] (RBM38 Antibody) at dilution 1/50, treated with synthetic peptide. (Original magnification:  $\times 200$ )