

Product datasheet for **TA351587**

RBM38 Rabbit Polyclonal Antibody

Product data:

Product Type:	Primary Antibodies
Applications:	IHC, WB
Recommended Dilution:	WB: 500-2000 WB positive control: Mouse liver tissue, 293T cell, K562 cell, Mouse heart tissue lysates IHC: 50-200 Positive control: Human liver cancer Predicted cell location: Cytoplasm
Reactivity:	Human, Mouse
Host:	Rabbit
Isotype:	IgG
Clonality:	Polyclonal
Immunogen:	Synthetic peptide of human RBM38
Formulation:	pH7.4 PBS, 0.05% NaN ₃ , 40% Glycerol
Concentration:	lot specific
Purification:	Antigen affinity purification
Conjugation:	Unconjugated
Storage:	Store at -20°C as received.
Stability:	Stable for 12 months from date of receipt.
Predicted Protein Size:	25 kDa
Gene Name:	RNA binding motif protein 38
Database Link:	NP_906270 Entrez Gene 56190 Mouse Entrez Gene 55544 Human Q9H0Z9



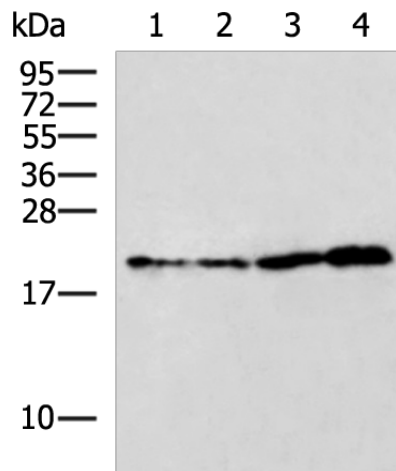
[View online »](#)

Background:

RBM38 (RNA-binding protein 38), also known as RNPC1 or SEB4. RBM38 is a cell cycle protein found in the cytosol and the Nucleus that exists as two alternatively spliced isoforms, 1 (RNPC1a) and 2 (RNPC1b), of 239 and 121 amino acids, respectively. Independent of p53 expression, RBM38 isoform 1 induces cell cycle arrest in G1 phase through maintaining transcript stability at the 3' UTR of p21, a regulator of cell cycle progression at S phase. RBM38 is also an mRNA splicing factor that regulates the expression of FGFR2. RBM38 contains one RRM (RNA recognition motif) domain.

Synonyms:

dj800j21.2; HSRNASEB; RNPC1; SEB4B; SEB4D

Product images:


Gel: 12%SDS-PAGE

Lysate: 40 µg

Lane 1-4: Mouse liver tissue

293T cell

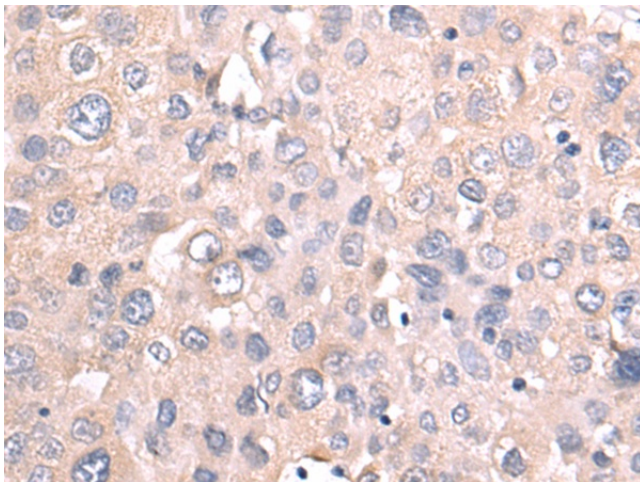
K562 cell

Mouse heart tissue lysates

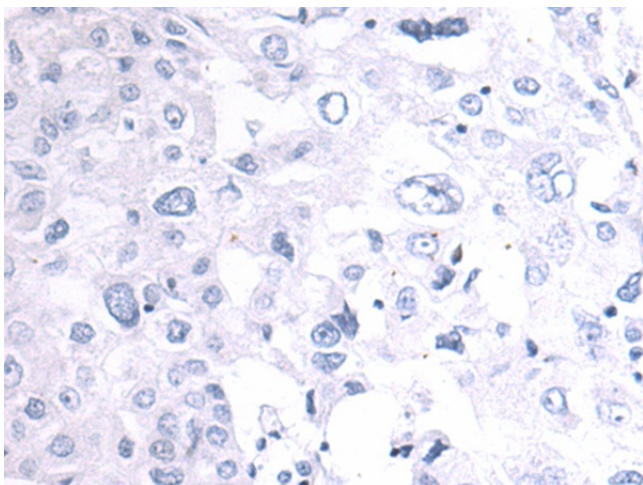
Primary antibody: TA351587 (RBM38 Antibody) at dilution 1/500

Secondary antibody: Goat anti rabbit IgG at 1/5000 dilution

Exposure time: 2 minutes



Immunohistochemistry of paraffin-embedded Human liver cancer tissue using TA351587 (RBM38 Antibody) at dilution 1/50 (Original magnification: ×200)



Immunohistochemistry of paraffin-embedded Human liver cancer tissue using TA351587 (RBM38 Antibody) at dilution 1/50, treated with synthetic peptide. (Original magnification: $\times 200$)