

## Product datasheet for **TA351581S**

### HIF-1 alpha (HIF1A) Rabbit Polyclonal Antibody

#### Product data:

Product Type:	Primary Antibodies
Applications:	WB
Recommended Dilution:	WB: 500-2000 WB positive control: 293T cells untreated and treated with cobalt chloride (0.1 mM for 4 hours)
Reactivity:	Human, Mouse, Rat
Host:	Rabbit
Isotype:	IgG
Clonality:	Polyclonal
Immunogen:	Synthetic peptide of human HIF1A
Formulation:	pH7.4 PBS, 0.05% NaN <sub>3</sub> , 40% Glycerol
Purification:	Antigen affinity purification
Conjugation:	Unconjugated
Storage:	Store at -20°C as received.
Stability:	Stable for 12 months from date of receipt.
Predicted Protein Size:	93 kDa
Gene Name:	hypoxia inducible factor 1 alpha subunit
Database Link:	<a href="#">NP_851397</a> <a href="#">Entrez Gene 15251 Mouse</a> <a href="#">Entrez Gene 29560 Rat</a> <a href="#">Entrez Gene 3091 Human</a> <a href="#">Q16665</a>
Background:	This gene encodes the alpha subunit of transcription factor hypoxia-inducible factor-1 (HIF-1), which is a heterodimer composed of an alpha and a beta subunit. HIF-1 functions as a master regulator of cellular and systemic homeostatic response to hypoxia by activating transcription of many genes, including those involved in energy metabolism, angiogenesis, apoptosis, and other genes whose protein products increase oxygen delivery or facilitate metabolic adaptation to hypoxia. HIF-1 thus plays an essential role in embryonic vascularization, tumor angiogenesis and pathophysiology of ischemic disease.
Synonyms:	bHLHe78; HIF-1-alpha; HIF-1A; HIF-1alpha; HIF1; HIF1-ALPHA; MOP1; PASD8

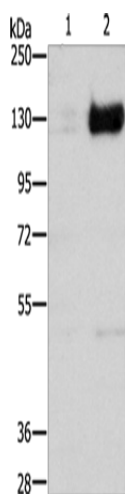


[View online »](#)

Protein Families: Transcription Factors

Protein Pathways: mTOR signaling pathway, Pathways in cancer, Renal cell carcinoma

### Product images:



Gel: 8%SDS-PAGE

Lysate: 40 µg

Lane 1-2: 293T cells untreated with cobalt chloride

293T cells treated with cobalt chloride (0.1 mM for 4 hours)

Primary antibody: [TA351581] (HIF1A Antibody) at dilution 1/750

Secondary antibody: Goat anti rabbit IgG at 1/8000 dilution

Exposure time: 2 minutes