

## Product datasheet for **TA351579**

### **RAD51 Rabbit Polyclonal Antibody**

#### **Product data:**

Product Type:	Primary Antibodies
Applications:	IHC, WB
Recommended Dilution:	WB: 500-2000 WB positive control: Hela cells IHC: 25-100 Positive control: Human brain Predicted cell location: Cytoplasm
Reactivity:	Human, Mouse
Host:	Rabbit
Isotype:	IgG
Clonality:	Polyclonal
Immunogen:	Synthetic peptide of human RAD51
Formulation:	pH7.4 PBS, 0.05% NaN <sub>3</sub> , 40% Glycerol
Concentration:	lot specific
Purification:	Antigen affinity purification
Conjugation:	Unconjugated
Storage:	Store at -20°C as received.
Stability:	Stable for 12 months from date of receipt.
Predicted Protein Size:	37 kDa
Gene Name:	RAD51 recombinase
Database Link:	<a href="#">NP_597994</a> <a href="#">Entrez Gene 19361 Mouse</a> <a href="#">Entrez Gene 5888 Human</a> <a href="#">Q06609</a>



[View online »](#)

**Background:**

The protein encoded by this gene is a member of the RAD51 protein family. RAD51 family members are highly similar to bacterial RecA and *Saccharomyces cerevisiae* Rad51, and are known to be involved in the homologous recombination and repair of DNA. This protein can interact with the ssDNA-binding protein RPA and RAD52, and it is thought to play roles in homologous pairing and strand transfer of DNA. This protein is also found to interact with BRCA1 and BRCA2, which may be important for the cellular response to DNA damage.

**Synonyms:**

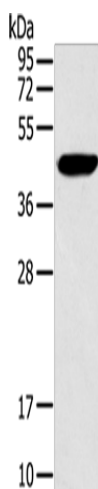
BRCC5; FANCR; HRAD51; HsRad51; HsT16930; MRMV2; RAD51A; RECA

**Protein Families:**

Druggable Genome, Stem cell - Pluripotency, Transcription Factors

**Protein Pathways:**

Homologous recombination, Pancreatic cancer, Pathways in cancer

**Product images:**

Gel: 10%SDS-PAGE

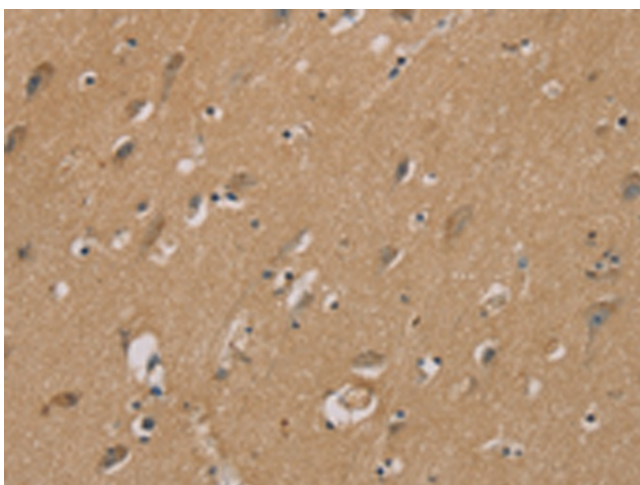
Lysate: 40 µg

Lane: HeLa cells

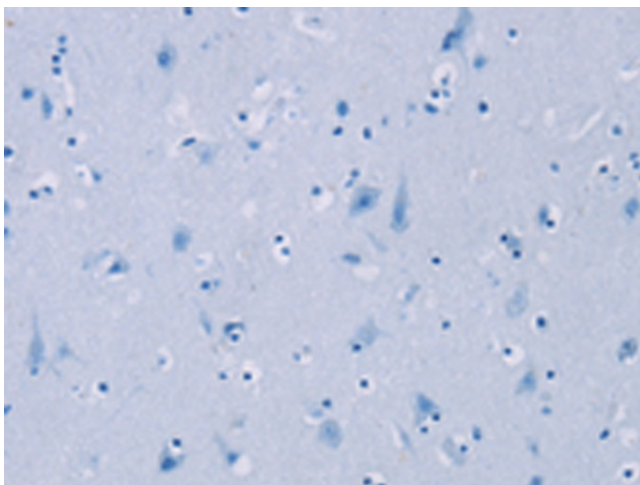
Primary antibody: TA351579 (RAD51 Antibody) at dilution 1/200

Secondary antibody: Goat anti rabbit IgG at 1/8000 dilution

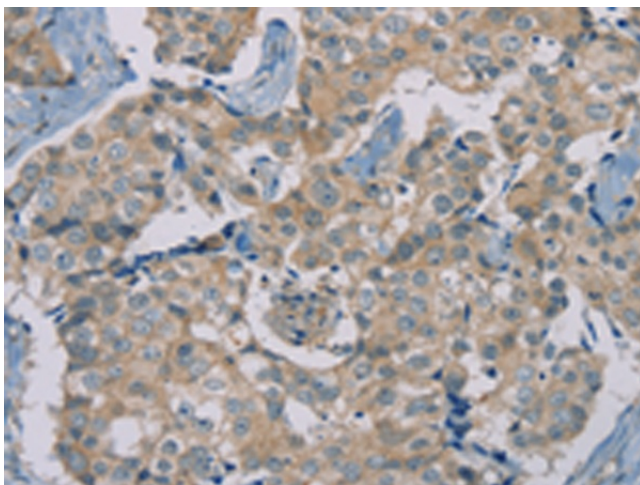
Exposure time: 20 seconds



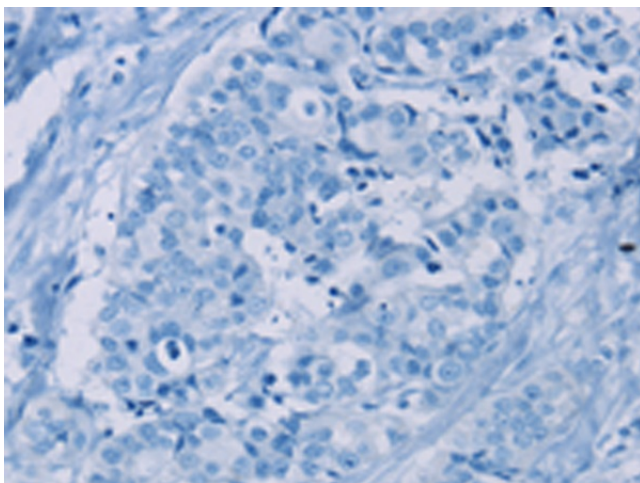
Immunohistochemistry of paraffin-embedded Human brain tissue using TA351579 (RAD51 Antibody) at dilution 1/40 (Original magnification: ×200)



Immunohistochemistry of paraffin-embedded Human brain tissue using TA351579 (RAD51 Antibody) at dilution 1/40, treated with synthetic peptide. (Original magnification:  $\times 200$ )



Immunohistochemistry of paraffin-embedded Human breast cancer tissue using TA351579 (RAD51 Antibody) at dilution 1/40 (Original magnification:  $\times 200$ )



Immunohistochemistry of paraffin-embedded Human breast cancer tissue using TA351579 (RAD51 Antibody) at dilution 1/40, treated with synthetic peptide. (Original magnification:  $\times 200$ )