

Product datasheet for **TA351575**

EMA (MUC1) Rabbit Polyclonal Antibody

Product data:

Product Type:	Primary Antibodies
Applications:	IHC, WB
Recommended Dilution:	WB: 200-1000 WB positive control: Mouse heart tissue IHC: 30-150 Positive control: Human breast cancer Predicted cell location: Cell membrane
Reactivity:	Human, Mouse
Host:	Rabbit
Isotype:	IgG
Clonality:	Polyclonal
Immunogen:	Synthetic peptide of human MUC1
Formulation:	pH7.4 PBS, 0.05% NaN ₃ , 40% Glycerol
Concentration:	lot specific
Purification:	Antigen affinity purification
Conjugation:	Unconjugated
Storage:	Store at -20°C as received.
Stability:	Stable for 12 months from date of receipt.
Predicted Protein Size:	122 kDa
Gene Name:	mucin 1, cell surface associated
Database Link:	NP_002447 Entrez Gene 17829 Mouse Entrez Gene 4582 Human P15941

Background: This gene encodes a membrane-bound protein that is a member of the mucin family. Mucins are O-glycosylated proteins that play an essential role in forming protective mucous barriers on epithelial surfaces. These proteins also play a role in intracellular signaling. This protein is expressed on the apical surface of epithelial cells that line the mucosal surfaces of many different tissues including lung, breast stomach and pancreas.

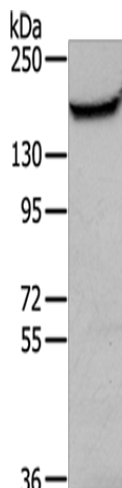


[View online »](#)

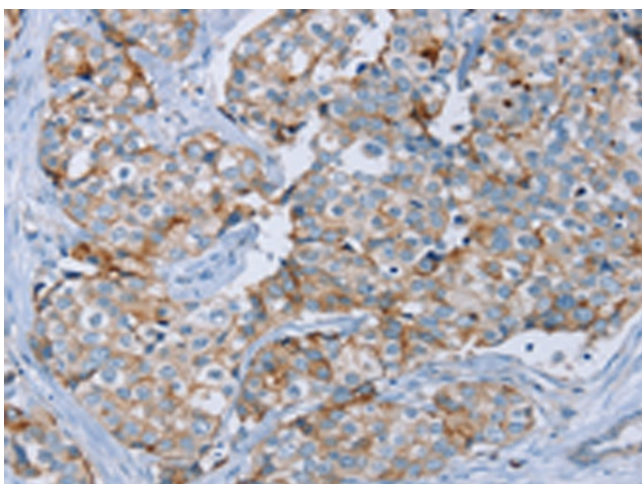
Synonyms: ADMCKD; ADMCKD1; CA 15-3; CD227; EMA; H23AG; KL-6; MAM6; MCD; MCKD; MCKD1; MUC-1; SEC

Protein Families: Druggable Genome, Secreted Protein, Transmembrane

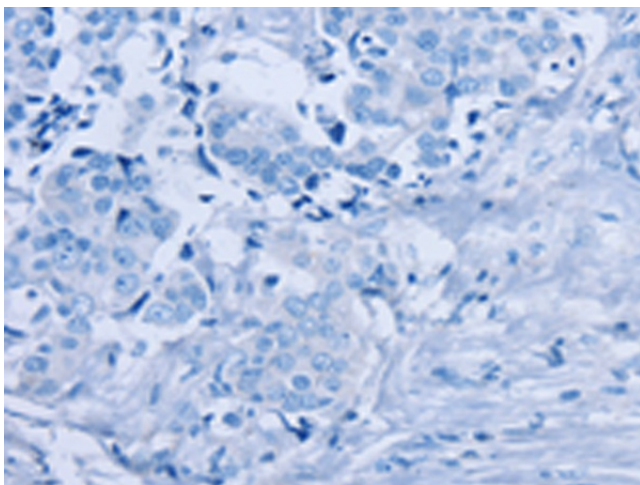
Product images:



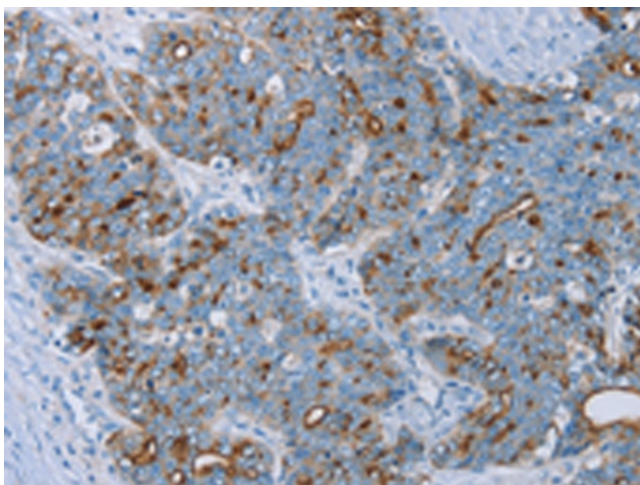
Gel: 6%SDS-PAGE
Lysate: 40 µg
Lane: Mouse heart tissue
Primary antibody: TA351575 (MUC1 Antibody) at dilution 1/200
Secondary antibody: Goat anti rabbit IgG at 1/8000 dilution
Exposure time: 5 minutes



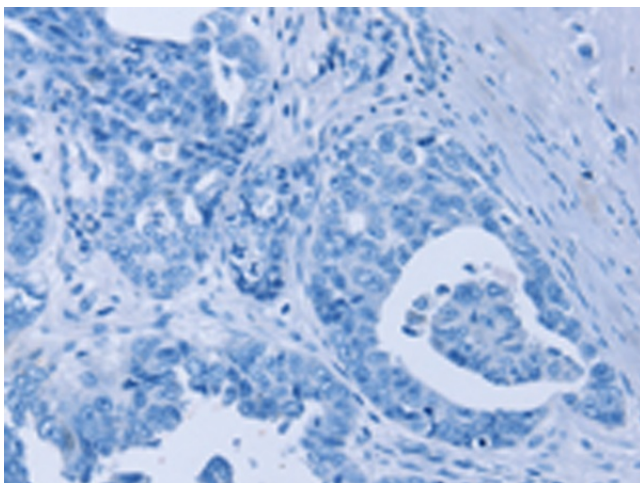
Immunohistochemistry of paraffin-embedded Human breast cancer tissue using TA351575 (MUC1 Antibody) at dilution 1/45 (Original magnification: ×200)



Immunohistochemistry of paraffin-embedded Human breast cancer tissue using TA351575 (MUC1 Antibody) at dilution 1/45, treated with synthetic peptide. (Original magnification: $\times 200$)



Immunohistochemistry of paraffin-embedded Human cervical cancer tissue using TA351575 (MUC1 Antibody) at dilution 1/45 (Original magnification: $\times 200$)



Immunohistochemistry of paraffin-embedded Human cervical cancer tissue using TA351575 (MUC1 Antibody) at dilution 1/45, treated with synthetic peptide. (Original magnification: $\times 200$)