

Product datasheet for **TA351571**

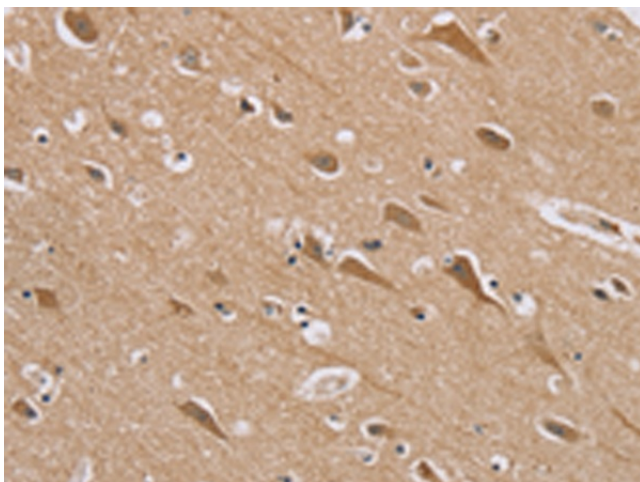
RAB6C Rabbit Polyclonal Antibody

Product data:

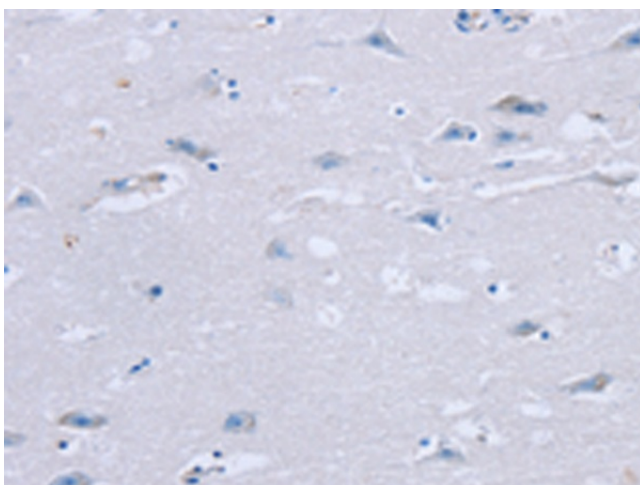
Product Type:	Primary Antibodies
Applications:	IHC
Recommended Dilution:	IHC: 50-200 Positive control: Human brain Predicted cell location: Cytoplasm and Nucleus
Reactivity:	Human
Host:	Rabbit
Isotype:	IgG
Clonality:	Polyclonal
Immunogen:	Synthetic peptide of human RAB6C
Formulation:	pH7.4 PBS, 0.05% NaN ₃ , 40% Glycerol
Concentration:	lot specific
Purification:	Antigen affinity purification
Conjugation:	Unconjugated
Storage:	Store at -20°C as received.
Stability:	Stable for 12 months from date of receipt.
Gene Name:	RAB6C, member RAS oncogene family
Database Link:	NP_115520 Entrez Gene 84084 Human Q9H0N0
Background:	Ras-related protein Rab-6C is a protein that in humans is encoded by the RAB6C gene. May be involved in the regulation of centrosome duplication and cell cycle progression. Highest levels are found in fetal and adult brain, prostate, testis and spinal cord.
Synonyms:	WTH3
Protein Families:	Druggable Genome



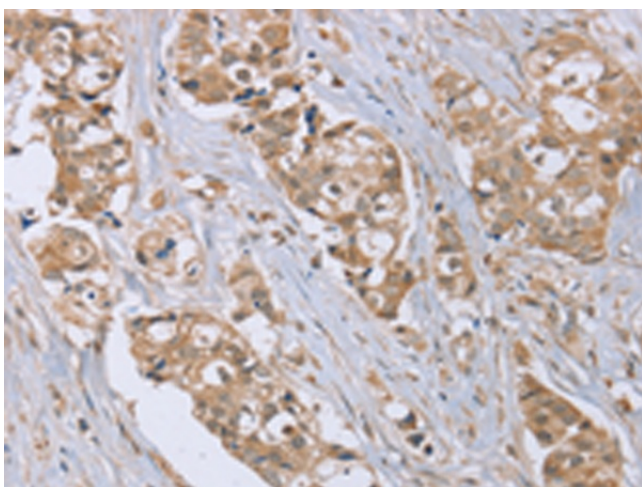
[View online »](#)

Product images:


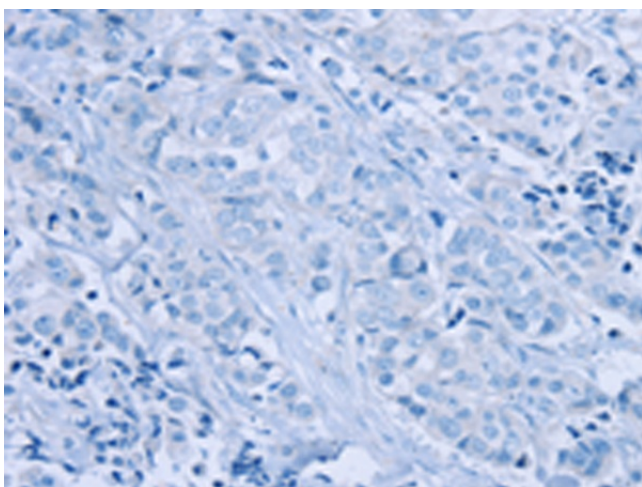
Immunohistochemistry of paraffin-embedded Human brain tissue using TA351571 (RAB6C Antibody) at dilution 1/45 (Original magnification: ×200)



Immunohistochemistry of paraffin-embedded Human brain tissue using TA351571 (RAB6C Antibody) at dilution 1/45, treated with synthetic peptide. (Original magnification: ×200)



Immunohistochemistry of paraffin-embedded Human breast cancer tissue using TA351571 (RAB6C Antibody) at dilution 1/45 (Original magnification: ×200)



Immunohistochemistry of paraffin-embedded Human breast cancer tissue using TA351571 (RAB6C Antibody) at dilution 1/45, treated with synthetic peptide. (Original magnification: ×200)