

Product datasheet for **TA351569S**

RAB8B Rabbit Polyclonal Antibody

Product data:

Product Type:	Primary Antibodies
Applications:	IHC, WB
Recommended Dilution:	WB: 200-1000 WB positive control: Human normal colon tissue IHC: 30-150 Positive control: Human breast cancer Predicted cell location: Cytoplasm and Cell membrane
Reactivity:	Human, Mouse, Rat
Host:	Rabbit
Isotype:	IgG
Clonality:	Polyclonal
Immunogen:	Synthetic peptide of human RAB8B
Formulation:	pH7.4 PBS, 0.05% NaN ₃ , 40% Glycerol
Purification:	Antigen affinity purification
Conjugation:	Unconjugated
Storage:	Store at -20°C as received.
Stability:	Stable for 12 months from date of receipt.
Predicted Protein Size:	24 kDa
Gene Name:	RAB8B, member RAS oncogene family
Database Link:	NP_057614 Entrez Gene 235442 MouseEntrez Gene 266688 RatEntrez Gene 51762 Human Q92930
Background:	RAB proteins, like RAB8B, are low molecular mass monomeric GTPases that localize on the cytoplasmic surfaces of distinct membrane-bound organelles. RAB proteins function in intracellular vesicle transport by aiding in the docking and/or fusion of vesicles with their target membranes.
Synonyms:	FLJ38125
Protein Families:	Druggable Genome

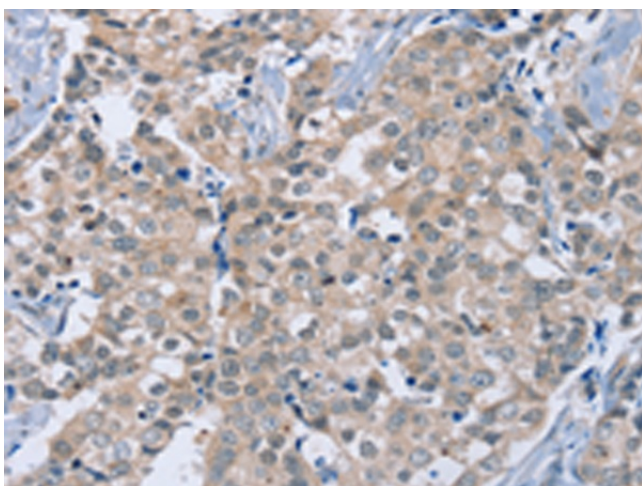


[View online »](#)

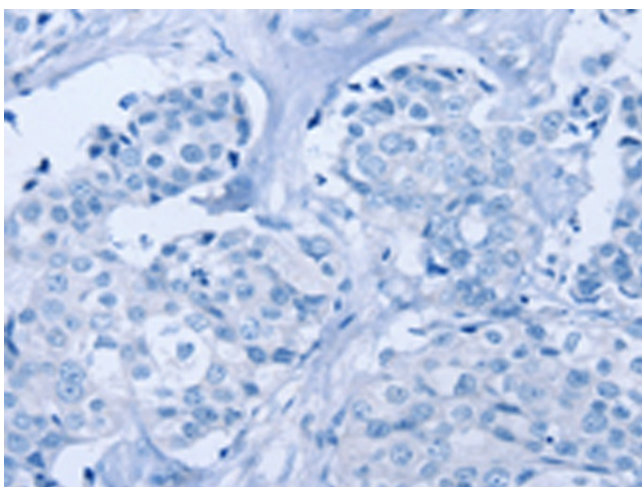
Product images:



Gel: 8%SDS-PAGE
Lysate: 80 μ g
Lane: Human normal colon tissue
Primary antibody: [TA351569] (RAB8B Antibody) at dilution 1/400
Secondary antibody: Goat anti rabbit IgG at 1/8000 dilution
Exposure time: 4 minutes



Immunohistochemistry of paraffin-embedded Human breast cancer tissue using [TA351569] (RAB8B Antibody) at dilution 1/40 (Original magnification: \times 200)



Immunohistochemistry of paraffin-embedded Human breast cancer tissue using [TA351569] (RAB8B Antibody) at dilution 1/40, treated with synthetic peptide. (Original magnification: ×200)