

## Product datasheet for **TA351569**

### **RAB8B Rabbit Polyclonal Antibody**

#### **Product data:**

<b>Product Type:</b>	Primary Antibodies
<b>Applications:</b>	IHC, WB
<b>Recommended Dilution:</b>	WB: 200-1000 WB positive control: Human normal colon tissue IHC: 30-150 Positive control: Human breast cancer Predicted cell location: Cytoplasm and Cell membrane
<b>Reactivity:</b>	Human, Mouse, Rat
<b>Host:</b>	Rabbit
<b>Isotype:</b>	IgG
<b>Clonality:</b>	Polyclonal
<b>Immunogen:</b>	Synthetic peptide of human RAB8B
<b>Formulation:</b>	pH7.4 PBS, 0.05% NaN <sub>3</sub> , 40% Glycerol
<b>Concentration:</b>	lot specific
<b>Purification:</b>	Antigen affinity purification
<b>Conjugation:</b>	Unconjugated
<b>Storage:</b>	Store at -20°C as received.
<b>Stability:</b>	Stable for 12 months from date of receipt.
<b>Predicted Protein Size:</b>	24 kDa
<b>Gene Name:</b>	RAB8B, member RAS oncogene family
<b>Database Link:</b>	<a href="#">NP_057614</a> <a href="#">Entrez Gene 235442 Mouse</a> <a href="#">Entrez Gene 266688 Rat</a> <a href="#">Entrez Gene 51762 Human</a> <a href="#">Q92930</a>
<b>Background:</b>	RAB proteins, like RAB8B, are low molecular mass monomeric GTPases that localize on the cytoplasmic surfaces of distinct membrane-bound organelles. RAB proteins function in intracellular vesicle transport by aiding in the docking and/or fusion of vesicles with their target membranes.
<b>Synonyms:</b>	FLJ38125



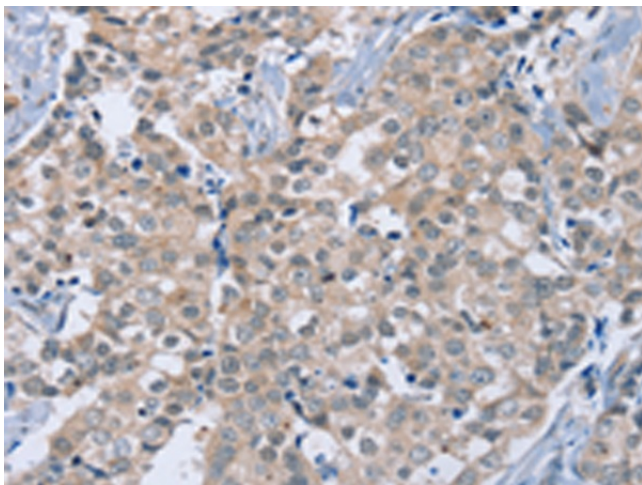
[View online »](#)

Protein Families: Druggable Genome

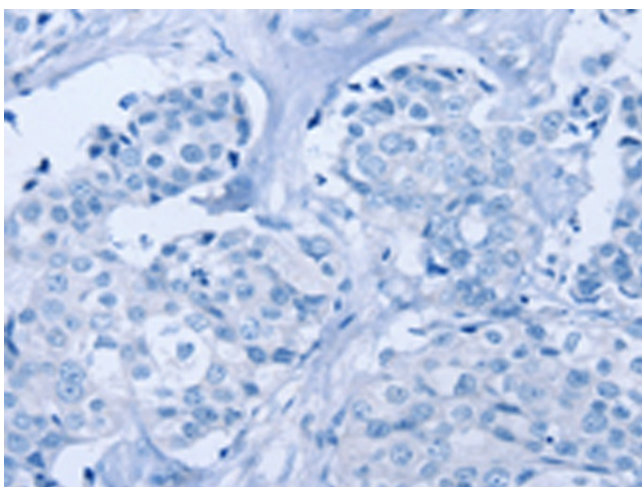
### Product images:



Gel: 8%SDS-PAGE  
Lysate: 80  $\mu$ g  
Lane: Human normal colon tissue  
Primary antibody: TA351569 (RAB8B Antibody) at dilution 1/400  
Secondary antibody: Goat anti rabbit IgG at 1/8000 dilution  
Exposure time: 4 minutes



Immunohistochemistry of paraffin-embedded Human breast cancer tissue using TA351569 (RAB8B Antibody) at dilution 1/40 (Original magnification:  $\times$ 200)



Immunohistochemistry of paraffin-embedded Human breast cancer tissue using TA351569 (RAB8B Antibody) at dilution 1/40, treated with synthetic peptide. (Original magnification:  $\times 200$ )