

## Product datasheet for **TA351568S**

### **RAB8A Rabbit Polyclonal Antibody**

#### **Product data:**

Product Type:	Primary Antibodies
Applications:	IHC, WB
Recommended Dilution:	WB: 1000-5000 WB positive control: Human cerebella tissue, Human cerebrum tissue lysates IHC: 50-100 Positive control: Human tonsil Predicted cell location: Cytoplasm
Reactivity:	Human, Mouse, Rat
Host:	Rabbit
Isotype:	IgG
Clonality:	Polyclonal
Immunogen:	Synthetic peptide of human RAB8A
Formulation:	pH7.4 PBS, 0.05% NaN <sub>3</sub> , 40% Glycerol
Purification:	Antigen affinity purification
Conjugation:	Unconjugated
Storage:	Store at -20°C as received.
Stability:	Stable for 12 months from date of receipt.
Predicted Protein Size:	24 kDa
Gene Name:	RAB8A, member RAS oncogene family
Database Link:	<a href="#">NP_005361</a> <a href="#">Entrez Gene 17274 Mouse</a> <a href="#">Entrez Gene 117103 Rat</a> <a href="#">Entrez Gene 4218 Human</a> <a href="#">P61006</a>

**Background:** The protein encoded by this gene is a member of the RAS superfamily which are small GTP/GDP-binding proteins with an average size of 200 amino acids. The RAS-related proteins of the RAB/YPT family may play a role in the transport of proteins from the endoplasmic reticulum to the Golgi and the plasma membrane. This protein shares 97%, 96%, and 51% similarity with the dog RAB8, mouse MEL, and mouse YPT1 proteins, respectively and contains the 4 GTP/GDP-binding sites that are present in all the RAS proteins.

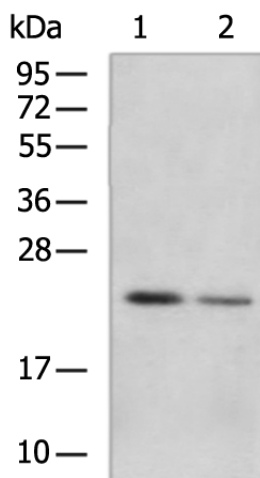


[View online »](#)

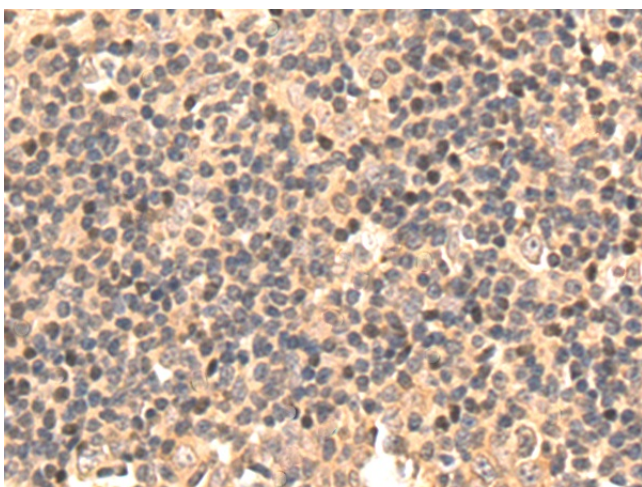
Synonyms: MEL; RAB8

Protein Families: Druggable Genome, Transcription Factors

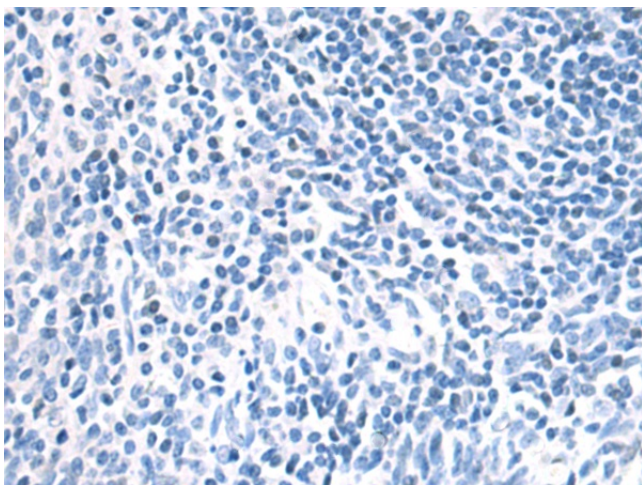
### Product images:



Gel: 12%SDS-PAGE  
Lysate: 40 µg  
Lane 1-2: Human cerebella tissue  
Human cerebrum tissue lysates  
Primary antibody: [TA351568] (RAB8A Antibody)  
at dilution 1/1000  
Secondary antibody: Goat anti rabbit IgG at  
1/5000 dilution  
Exposure time: 1 minute



Immunohistochemistry of paraffin-embedded  
Human tonsil tissue using [TA351568] (RAB8A  
Antibody) at dilution 1/60 (Original magnification:  
×200)



Immunohistochemistry of paraffin-embedded Human tonsil tissue using [TA351568] (RAB8A Antibody) at dilution 1/60, treated with synthetic peptide. (Original magnification:  $\times 200$ )