

## Product datasheet for **TA351565S**

### PTPN20B (PTPN20) Rabbit Polyclonal Antibody

#### Product data:

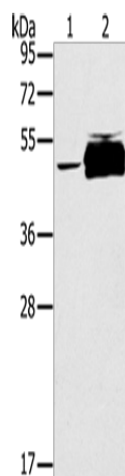
Product Type:	Primary Antibodies
Applications:	IHC, WB
Recommended Dilution:	WB: 500-2000 WB positive control: K562 cells and human testis tissue IHC: 50-300 Positive control: Human cervical cancer Predicted cell location: Cytoplasm and Nucleus
Reactivity:	Human
Host:	Rabbit
Isotype:	IgG
Clonality:	Polyclonal
Immunogen:	Synthetic peptide of human PTPN20B
Formulation:	pH7.4 PBS, 0.05% NaN <sub>3</sub> , 40% Glycerol
Purification:	Antigen affinity purification
Conjugation:	Unconjugated
Storage:	Store at -20°C as received.
Stability:	Stable for 12 months from date of receipt.
Predicted Protein Size:	48 kDa
Gene Name:	protein tyrosine phosphatase, non-receptor type 20
Database Link:	<a href="#">NP_056420</a> <a href="#">Entrez Gene 26095 Human</a> <a href="#">Q4JDL3</a>
Background:	The product of this gene belongs to the family of classical tyrosine-specific protein tyrosine phosphatases. Many protein tyrosine phosphatases have been shown to regulate fundamental cellular processes. The encoded protein appears to be targeted to sites of actin polymerization. A pseudogene of this gene has been defined on chromosome 10. Alternative splicing results in multiple transcript variants.
Synonyms:	bA42B19.1; bA142I17.1; CT126; PTPN20A; PTPN20B



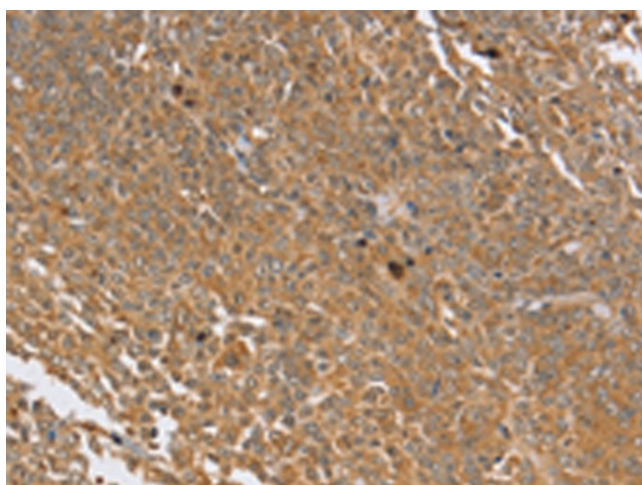
[View online »](#)

Protein Families: Druggable Genome, Phosphatase

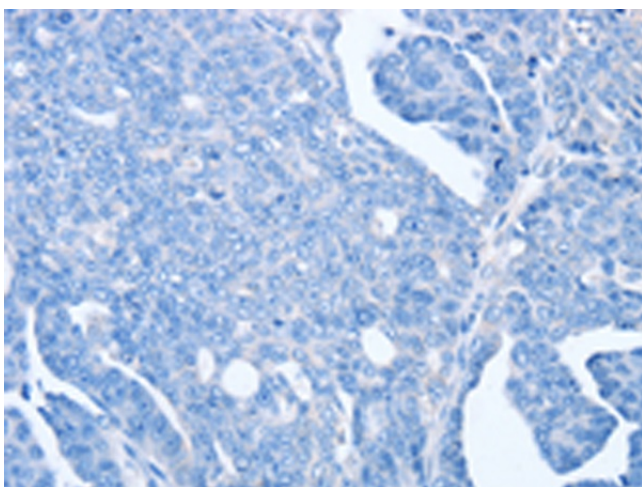
### Product images:



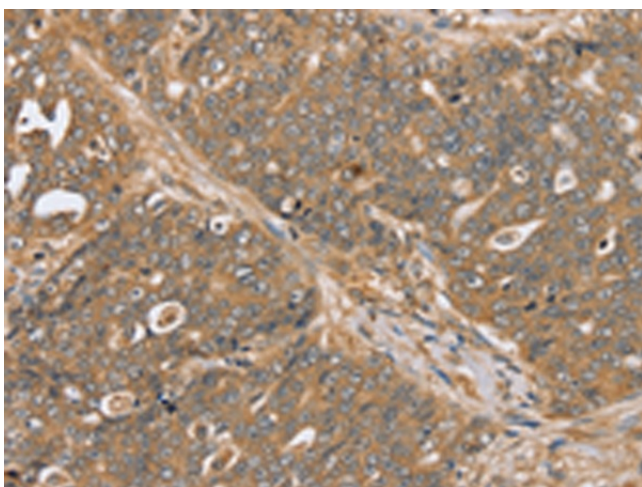
Gel: 8%SDS-PAGE  
Lysate: 40  $\mu$ g  
Lane 1-2: K562 cells  
human testis tissue  
Primary antibody: [TA351565] (PTPN20 Antibody)  
at dilution 1/200  
Secondary antibody: Goat anti rabbit IgG at  
1/8000 dilution  
Exposure time: 1 minute



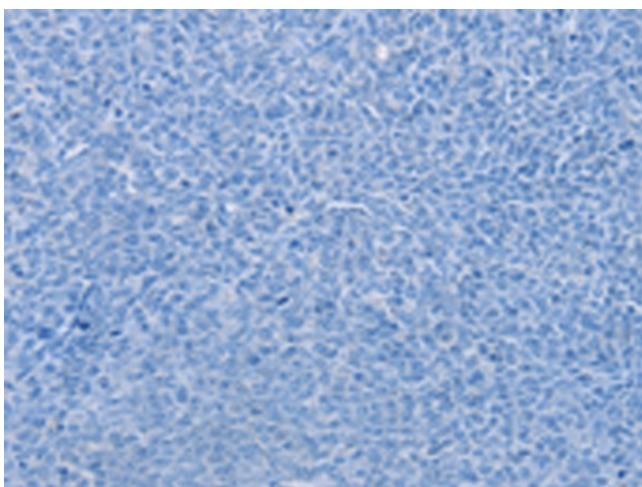
Immunohistochemistry of paraffin-embedded  
Human cervical cancer tissue using [TA351565]  
(PTPN20 Antibody) at dilution 1/30 (Original  
magnification:  $\times$ 200)



Immunohistochemistry of paraffin-embedded Human cervical cancer tissue using [TA351565] (PTPN20 Antibody) at dilution 1/30, treated with synthetic peptide. (Original magnification: ×200)



Immunohistochemistry of paraffin-embedded Human ovarian cancer tissue using [TA351565] (PTPN20 Antibody) at dilution 1/30 (Original magnification: ×200)



Immunohistochemistry of paraffin-embedded Human ovarian cancer tissue using [TA351565] (PTPN20 Antibody) at dilution 1/30, treated with synthetic peptide. (Original magnification: ×200)