

Product datasheet for **TA351565**

PTPN20B (PTPN20) Rabbit Polyclonal Antibody

Product data:

Product Type:	Primary Antibodies
Applications:	IHC, WB
Recommended Dilution:	WB: 500-2000 WB positive control: K562 cells and human testis tissue IHC: 50-300 Positive control: Human cervical cancer Predicted cell location: Cytoplasm and Nucleus
Reactivity:	Human
Host:	Rabbit
Isotype:	IgG
Clonality:	Polyclonal
Immunogen:	Synthetic peptide of human PTPN20B
Formulation:	pH7.4 PBS, 0.05% NaN ₃ , 40% Glycerol
Concentration:	lot specific
Purification:	Antigen affinity purification
Conjugation:	Unconjugated
Storage:	Store at -20°C as received.
Stability:	Stable for 12 months from date of receipt.
Predicted Protein Size:	48 kDa
Gene Name:	protein tyrosine phosphatase, non-receptor type 20
Database Link:	NP_056420 Entrez Gene 26095 Human Q4JDL3

Background: The product of this gene belongs to the family of classical tyrosine-specific protein tyrosine phosphatases. Many protein tyrosine phosphatases have been shown to regulate fundamental cellular processes. The encoded protein appears to be targeted to sites of actin polymerization. A pseudogene of this gene has been defined on chromosome 10. Alternative splicing results in multiple transcript variants.

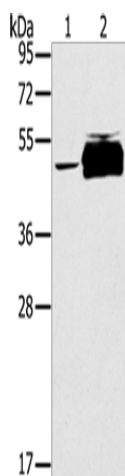


[View online »](#)

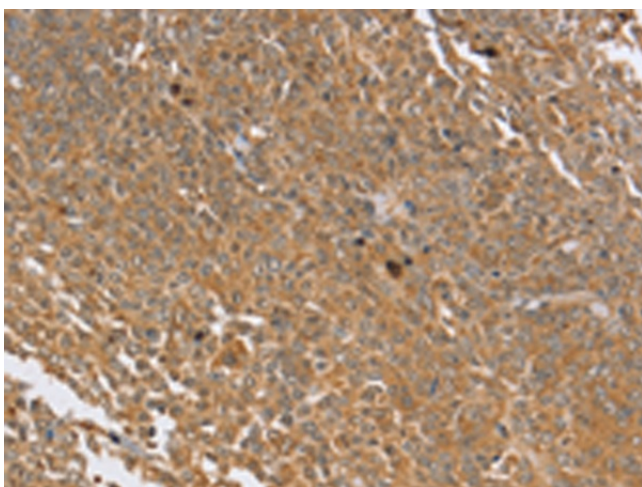
Synonyms: bA42B19.1; bA142I17.1; CT126; PTPN20A; PTPN20B

Protein Families: Druggable Genome, Phosphatase

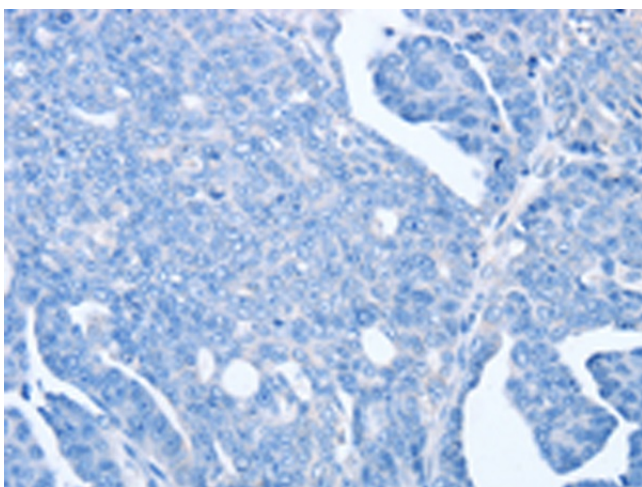
Product images:



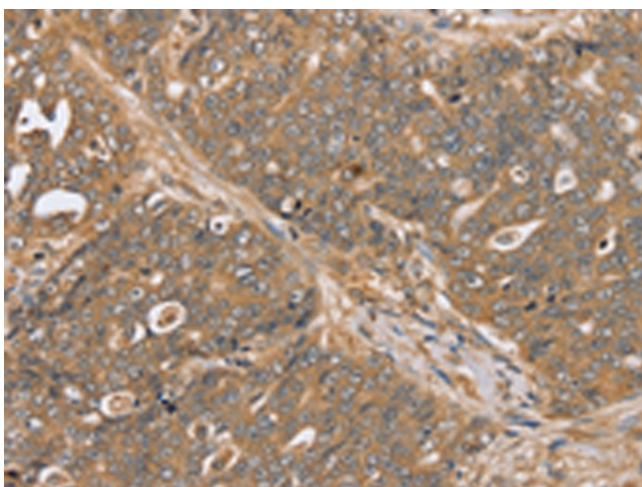
Gel: 8%SDS-PAGE
 Lysate: 40 µg
 Lane 1-2: K562 cells
 human testis tissue
 Primary antibody: TA351565 (PTPN20 Antibody)
 at dilution 1/200
 Secondary antibody: Goat anti rabbit IgG at
 1/8000 dilution
 Exposure time: 1 minute



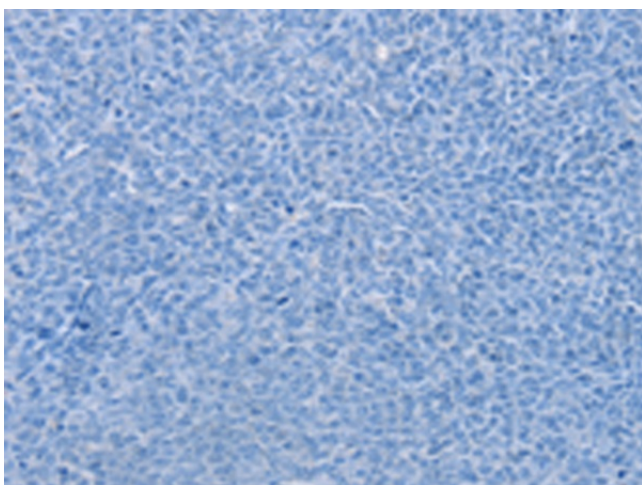
Immunohistochemistry of paraffin-embedded
 Human cervical cancer tissue using TA351565
 (PTPN20 Antibody) at dilution 1/30 (Original
 magnification: ×200)



Immunohistochemistry of paraffin-embedded Human cervical cancer tissue using TA351565 (PTPN20 Antibody) at dilution 1/30, treated with synthetic peptide. (Original magnification: ×200)



Immunohistochemistry of paraffin-embedded Human ovarian cancer tissue using TA351565 (PTPN20 Antibody) at dilution 1/30 (Original magnification: ×200)



Immunohistochemistry of paraffin-embedded Human ovarian cancer tissue using TA351565 (PTPN20 Antibody) at dilution 1/30, treated with synthetic peptide. (Original magnification: ×200)