

Product datasheet for **TA351564**

PTPN12 Rabbit Polyclonal Antibody

Product data:

Product Type:	Primary Antibodies
Applications:	IHC, WB
Recommended Dilution:	WB: 200-1000 WB positive control: 231 and K562 cells IHC: 100-300 Positive control: Human lung cancer Predicted cell location: Cytoplasm
Reactivity:	Human, Mouse
Host:	Rabbit
Isotype:	IgG
Clonality:	Polyclonal
Immunogen:	Synthetic peptide of human PTPN12
Formulation:	pH7.4 PBS, 0.05% NaN ₃ , 40% Glycerol
Concentration:	lot specific
Purification:	Antigen affinity purification
Conjugation:	Unconjugated
Storage:	Store at -20°C as received.
Stability:	Stable for 12 months from date of receipt.
Predicted Protein Size:	88 kDa
Gene Name:	protein tyrosine phosphatase, non-receptor type 12
Database Link:	NP_002826 Entrez Gene 5782 Human Q05209



[View online »](#)

Background:

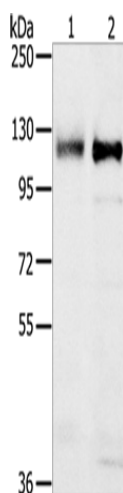
The protein encoded by this gene is a member of the protein tyrosine phosphatase (PTP) family. PTPs are signaling molecules that regulate a variety of cellular processes including cell growth, differentiation, mitotic cycle, and oncogenic transformation. This PTP contains a C-terminal PEST motif, which serves as a protein-protein interaction domain, and may regulate protein intracellular half-life. This PTP was found to bind and dephosphorylate the product of the oncogene c-ABL and thus may play a role in oncogenesis.

Synonyms:

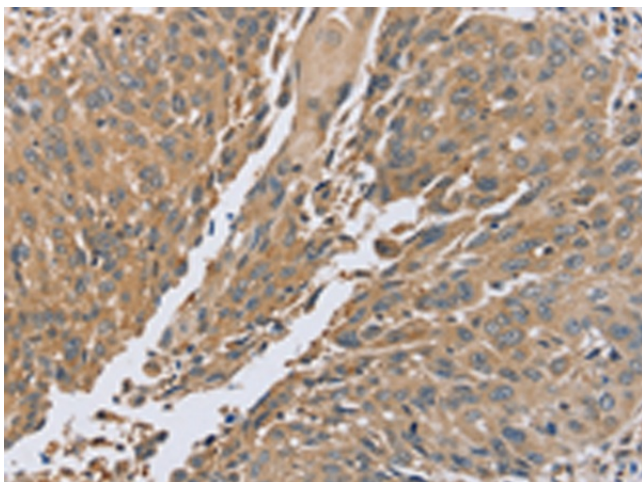
PTP-PEST; PTPG1

Protein Families:

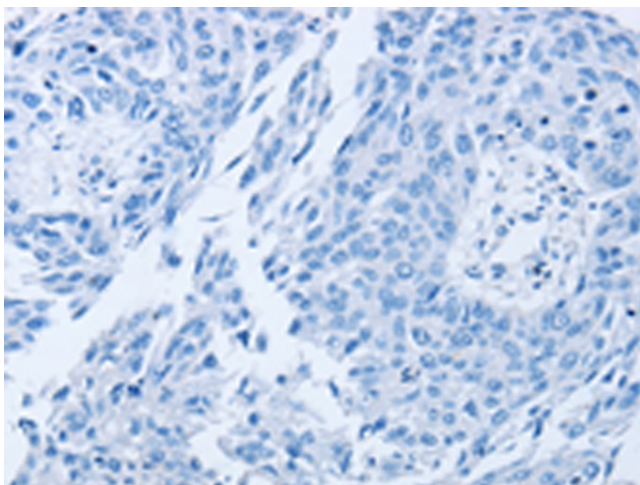
Druggable Genome, Phosphatase

Product images:

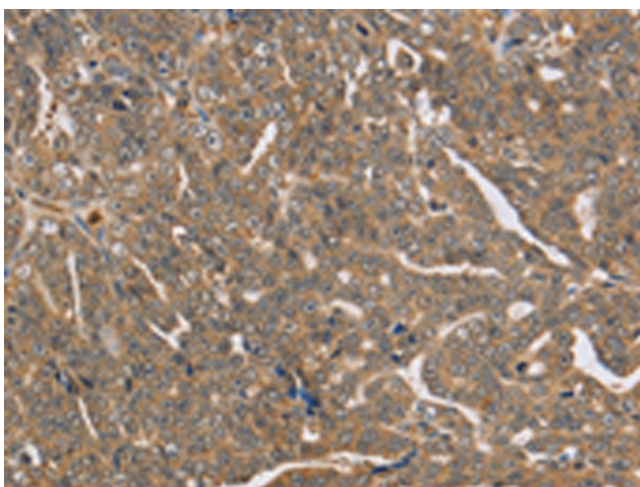
Gel: 6%SDS-PAGE
Lysate: 40 μ g
Lane 1-2: 231 cells
K562 cells
Primary antibody: TA351564 (PTPN12 Antibody)
at dilution 1/200
Secondary antibody: Goat anti rabbit IgG at
1/8000 dilution
Exposure time: 10 minutes



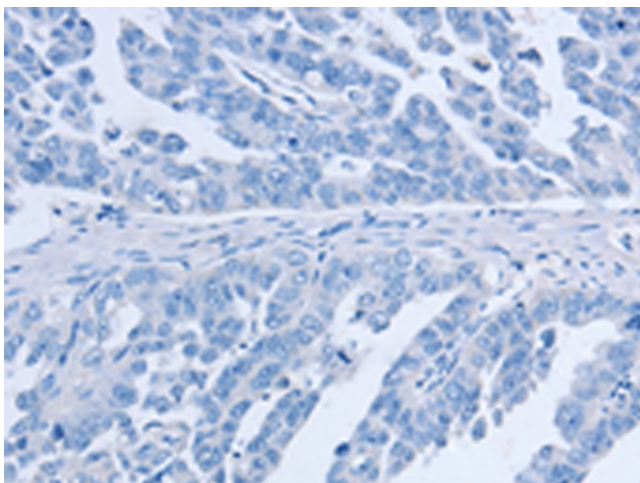
Immunohistochemistry of paraffin-embedded
Human lung cancer tissue using TA351564
(PTPN12 Antibody) at dilution 1/45 (Original
magnification: \times 200)



Immunohistochemistry of paraffin-embedded Human lung cancer tissue using TA351564 (PTPN12 Antibody) at dilution 1/45, treated with synthetic peptide. (Original magnification: $\times 200$)



Immunohistochemistry of paraffin-embedded Human cervical cancer tissue using TA351564 (PTPN12 Antibody) at dilution 1/45 (Original magnification: $\times 200$)



Immunohistochemistry of paraffin-embedded Human cervical cancer tissue using TA351564 (PTPN12 Antibody) at dilution 1/45, treated with synthetic peptide. (Original magnification: $\times 200$)