

Product datasheet for **TA351562**

EP1 (PTGER1) Rabbit Polyclonal Antibody

Product data:

Product Type:	Primary Antibodies
Applications:	WB
Recommended Dilution:	WB: 500-2000 WB positive control: 293T, A549, hela and PC3 cells
Reactivity:	Human, Mouse, Rat
Host:	Rabbit
Isotype:	IgG
Clonality:	Polyclonal
Immunogen:	Synthetic peptide of human PTGER1
Formulation:	pH7.4 PBS, 0.05% NaN ₃ , 40% Glycerol
Concentration:	lot specific
Purification:	Antigen affinity purification
Conjugation:	Unconjugated
Storage:	Store at -20°C as received.
Stability:	Stable for 12 months from date of receipt.
Predicted Protein Size:	42 kDa
Gene Name:	prostaglandin E receptor 1
Database Link:	NP_000946 Entrez Gene 19216 MouseEntrez Gene 25637 RatEntrez Gene 5731 Human P34995
Background:	The protein encoded by this gene is a member of the G protein-coupled receptor family. This protein is one of four receptors identified for prostaglandin E ₂ (PGE ₂). Through a phosphatidylinositol-calcium second messenger system, G-Q proteins mediate this receptor's activity. Knockout studies in mice suggested a role of this receptor in mediating algisia and in regulation of blood pressure. Studies in mice also suggested that this gene may mediate adrenocorticotrophic hormone response to bacterial endotoxin.
Synonyms:	EP1

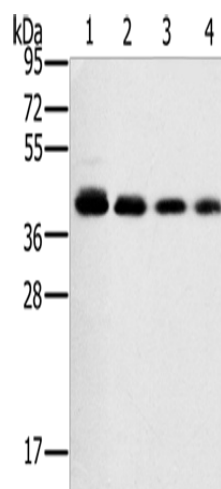


[View online »](#)

Protein Families: Druggable Genome, GPCR, Transmembrane

Protein Pathways: Calcium signaling pathway, Neuroactive ligand-receptor interaction

Product images:



Gel: 10%SDS-PAGE

Lysate: 40 µg

Lane 1-4: 293T cells

A549 cells

hela cells

PC3 cells

Primary antibody: TA351562 (PTGER1 Antibody)

at dilution 1/200

Secondary antibody: Goat anti rabbit IgG at

1/8000 dilution

Exposure time: 10 seconds