

Product datasheet for **TA351558**

PRR6 (CENPV) Rabbit Polyclonal Antibody

Product data:

Product Type:	Primary Antibodies
Applications:	IHC, WB
Recommended Dilution:	WB: 500-2000 WB positive control: Raji, Jurkat, 293T and hela cells IHC: 50-200 Positive control: Human thyroid cancer Predicted cell location: Nucleus
Reactivity:	Human, Mouse
Host:	Rabbit
Isotype:	IgG
Clonality:	Polyclonal
Immunogen:	Synthetic peptide of human CENPV
Formulation:	pH7.4 PBS, 0.05% NaN ₃ , 40% Glycerol
Concentration:	lot specific
Purification:	Antigen affinity purification
Conjugation:	Unconjugated
Storage:	Store at -20°C as received.
Stability:	Stable for 12 months from date of receipt.
Predicted Protein Size:	30 kDa
Gene Name:	centromere protein V
Database Link:	NP_859067 Entrez Gene 201161 Human Q7Z7K6



[View online »](#)

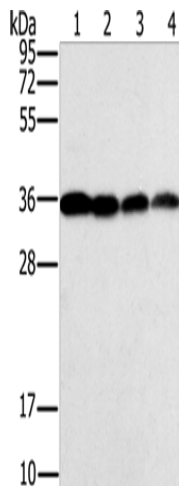
Background:

CENPV orthologs were detected in a range of species, including plants, but the proline-rich region was detected only in primates, rodents, birds, and amphibians, and long proline stretches were found only in primates. Northern blot analysis showed ubiquitous Cenpv expression in mouse tissues, with highest expression in testis, followed by small intestine, brain, and kidney. Immunofluorescence microscopy of mouse fibroblasts revealed colocalization of Cenpv with stabilized cytoplasmic microtubules. Western blot analysis of Ramos B cells detected CENPV at an apparent molecular mass of 40 kD.

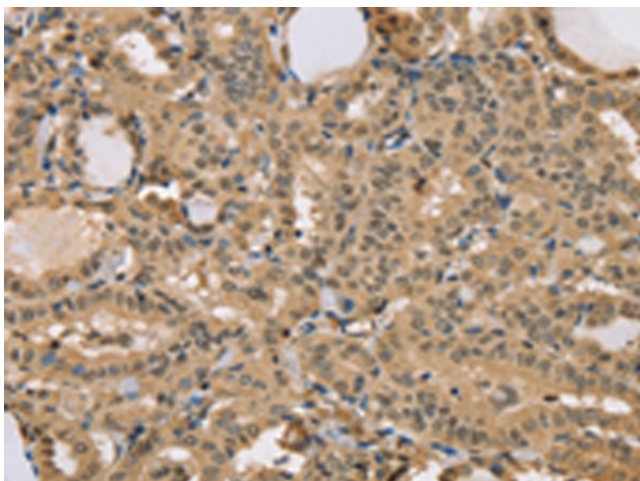
Synonyms:

3110013H01Rik; CENP-V; p30; PRR6

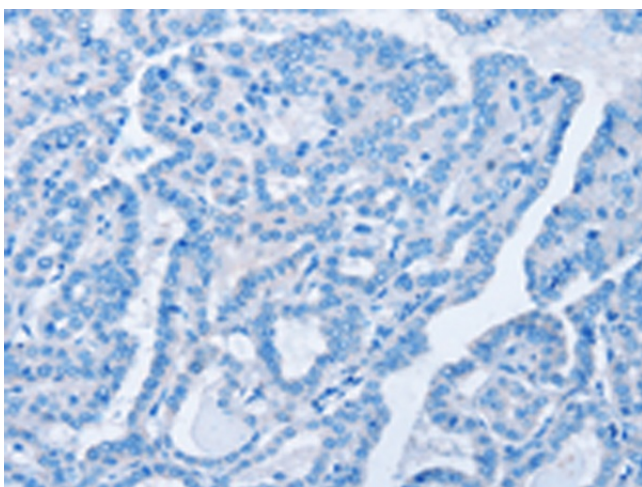
Product images:



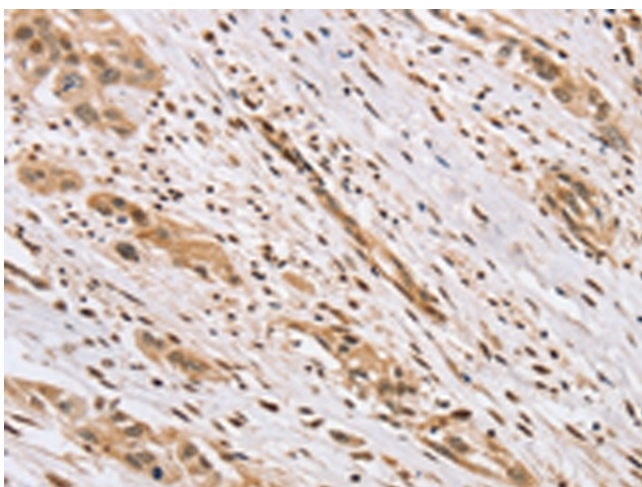
Gel: 10%SDS-PAGE
 Lysate: 40 µg
 Lane 1-4: Raji cells
 Jurkat cells
 293T cells
 hela cells
 Primary antibody: TA351558 (CENPV Antibody) at dilution 1/200
 Secondary antibody: Goat anti rabbit IgG at 1/8000 dilution
 Exposure time: 1 second



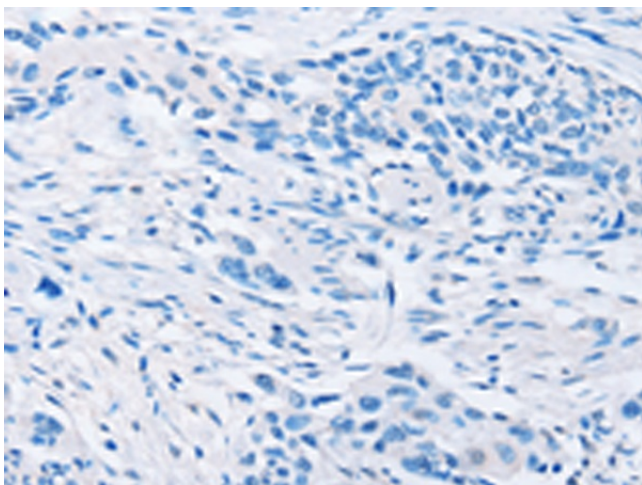
Immunohistochemistry of paraffin-embedded Human thyroid cancer tissue using TA351558 (CENPV Antibody) at dilution 1/40 (Original magnification: ×200)



Immunohistochemistry of paraffin-embedded Human thyroid cancer tissue using TA351558 (CENPV Antibody) at dilution 1/40, treated with synthetic peptide. (Original magnification: ×200)



Immunohistochemistry of paraffin-embedded Human esophagus cancer tissue using TA351558 (CENPV Antibody) at dilution 1/40 (Original magnification: ×200)



Immunohistochemistry of paraffin-embedded Human esophagus cancer tissue using TA351558 (CENPV Antibody) at dilution 1/40, treated with synthetic peptide. (Original magnification: ×200)