

Product datasheet for **TA351557**

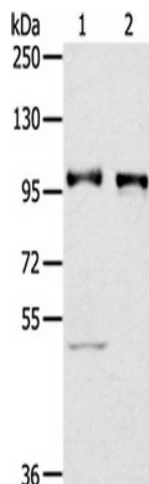
PROX1 Rabbit Polyclonal Antibody

Product data:

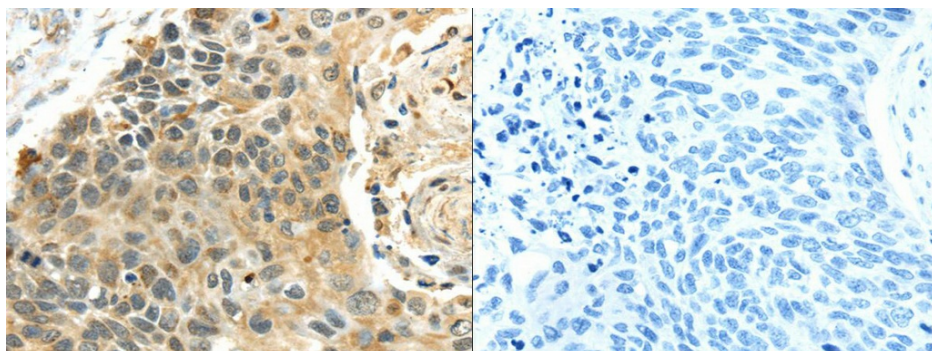
Product Type:	Primary Antibodies
Applications:	IHC, WB
Recommended Dilution:	ELISA: 2000-5000, WB: 500-2000, IHC: 25-100
Reactivity:	Human, Mouse
Host:	Rabbit
Isotype:	IgG
Clonality:	Polyclonal
Immunogen:	Synthetic peptide of human PROX1
Formulation:	pH7.4 PBS, 0.05% NaN ₃ , 40% Glycerol
Concentration:	lot specific
Purification:	Antigen affinity purification
Conjugation:	Unconjugated
Storage:	Store at -20°C as received.
Stability:	Stable for 12 months from date of receipt.
Predicted Protein Size:	83 kDa
Gene Name:	prospero homeobox 1
Database Link:	NP_002754 Entrez Gene 19130 Mouse Entrez Gene 5629 Human Q92786
Background:	The protein encoded by this gene is a member of the homeobox transcription factor family. Members of this family contain a homeobox domain that consists of a 60-amino acid helix-turn-helix structure that binds DNA and RNA. The protein encoded by this gene is conserved across vertebrates and may play an essential role during development.
Synonyms:	prospero-related homeobox 1; prospero homeobox 1
Protein Families:	Embryonic stem cells, ES Cell Differentiation/IPS



[View online »](#)

Product images:

Gel: 6%SDS-PAGE, Lysate: 40 ug, Lane 1-2: Human fetal liver tissue, 231 cells, Primary antibody: (PROX1 Antibody) at dilution 1/300 dilution, Secondary antibody: Goat anti rabbit IgG at 1/8000 dilution, Exposure time: 2 minutes



The image on the left is immunohistochemistry of paraffin-embedded Human esophagus cancer tissue using (PROX1 Antibody) at dilution 1/40, on the right is treated with synthetic peptide. (Original magnification: $\times 200$)