

Product datasheet for **TA351556**

EP2 (PTGER2) Rabbit Polyclonal Antibody

Product data:

Product Type:	Primary Antibodies
Applications:	IHC, WB
Recommended Dilution:	WB: 200-1000 WB positive control: Mouse liver and lung tissue IHC: 50-200 Positive control: Human ovarian cancer Predicted cell location: Cytoplasm
Reactivity:	Human, Mouse
Host:	Rabbit
Isotype:	IgG
Clonality:	Polyclonal
Immunogen:	Synthetic peptide of human PTGER2
Formulation:	pH7.4 PBS, 0.05% NaN ₃ , 40% Glycerol
Concentration:	lot specific
Purification:	Antigen affinity purification
Conjugation:	Unconjugated
Storage:	Store at -20°C as received.
Stability:	Stable for 12 months from date of receipt.
Predicted Protein Size:	40 kDa
Gene Name:	prostaglandin E receptor 2
Database Link:	NP_000947 Entrez Gene 19217 Mouse Entrez Gene 5732 Human P43116
Background:	This gene encodes a receptor for prostaglandin E ₂ , a metabolite of arachidonic acid which has different biologic activities in a wide range of tissues. Mutations in this gene are associated with aspirin-induced susceptibility to asthma.
Synonyms:	EP2

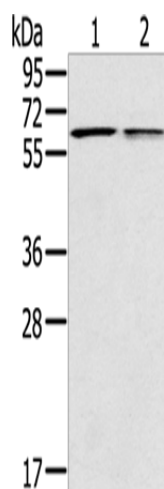


[View online »](#)

Protein Families: Druggable Genome, GPCR, Transmembrane

Protein Pathways: Neuroactive ligand-receptor interaction

Product images:



Gel: 10%SDS-PAGE

Lysate: 40 μ g

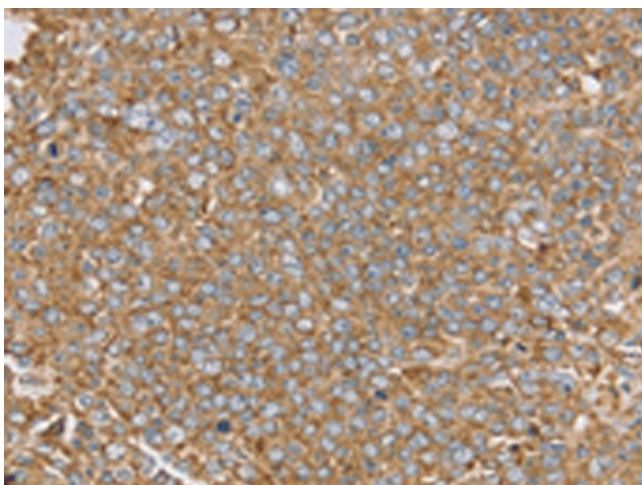
Lane 1-2: Mouse liver tissue

Mouse lung tissue

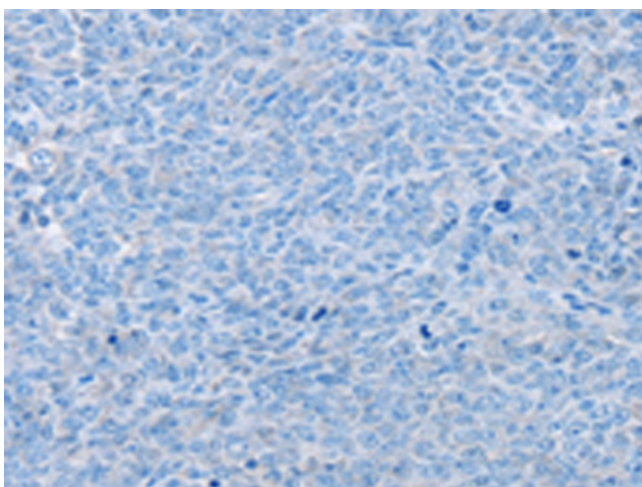
Primary antibody: TA351556 (PTGER2 Antibody)
at dilution 1/200

Secondary antibody: Goat anti rabbit IgG at
1/8000 dilution

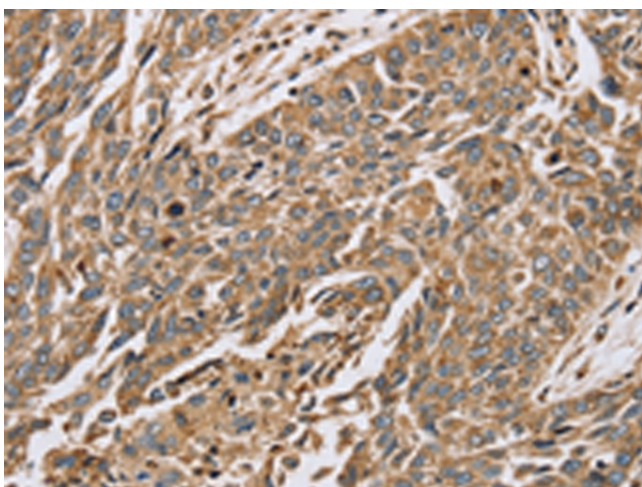
Exposure time: 10 seconds



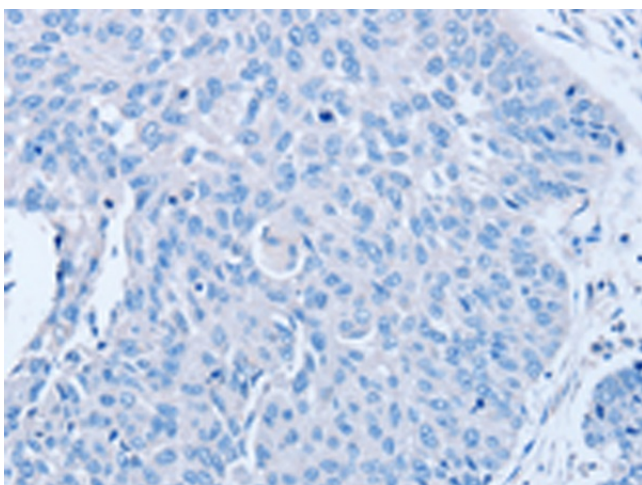
Immunohistochemistry of paraffin-embedded
Human ovarian cancer tissue using TA351556
(PTGER2 Antibody) at dilution 1/45 (Original
magnification: \times 200)



Immunohistochemistry of paraffin-embedded Human ovarian cancer tissue using TA351556 (PTGER2 Antibody) at dilution 1/45, treated with synthetic peptide. (Original magnification: ×200)



Immunohistochemistry of paraffin-embedded Human lung cancer tissue using TA351556 (PTGER2 Antibody) at dilution 1/45 (Original magnification: ×200)



Immunohistochemistry of paraffin-embedded Human lung cancer tissue using TA351556 (PTGER2 Antibody) at dilution 1/45, treated with synthetic peptide. (Original magnification: ×200)