

Product datasheet for **TA351555**

PTP4A2 Rabbit Polyclonal Antibody

Product data:

Product Type:	Primary Antibodies
Applications:	IHC, WB
Recommended Dilution:	WB: 500-2000 WB positive control: Mouse brain and heart tissue IHC: 25-100 Positive control: Human breast cancer Predicted cell location: Cell membrane
Reactivity:	Human, Mouse, Rat
Host:	Rabbit
Isotype:	IgG
Clonality:	Polyclonal
Immunogen:	Synthetic peptide of human PTP4A2
Formulation:	pH7.4 PBS, 0.05% NaN ₃ , 40% Glycerol
Concentration:	lot specific
Purification:	Antigen affinity purification
Conjugation:	Unconjugated
Storage:	Store at -20°C as received.
Stability:	Stable for 12 months from date of receipt.
Predicted Protein Size:	19 kDa
Gene Name:	protein tyrosine phosphatase type IVA, member 2
Database Link:	NP_536316 Entrez Gene 19244 Mouse Entrez Gene 85237 Rat Entrez Gene 8073 Human Q12974



[View online »](#)

Background:

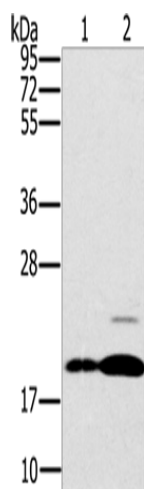
The protein encoded by this gene belongs to a small class of the protein tyrosine phosphatase (PTP) family. PTPs are cell signaling molecules that play regulatory roles in a variety of cellular processes. PTPs in this class contain a protein tyrosine phosphatase catalytic domain and a characteristic C-terminal prenylation motif. This PTP has been shown to primarily associate with plasmic and endosomal membrane through its C-terminal prenylation.

Synonyms:

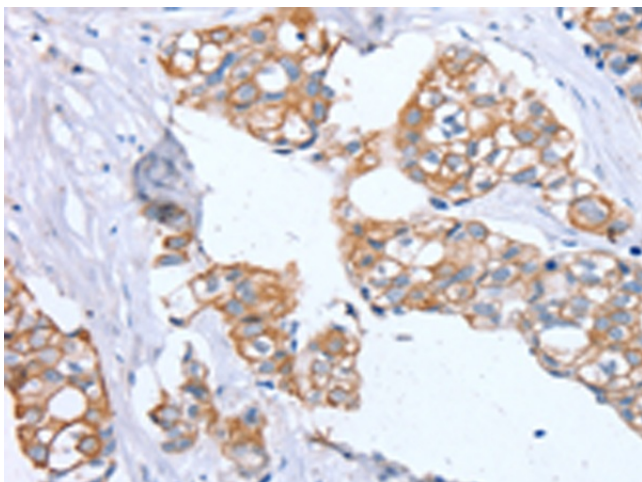
HH7-2; HH13; HU-PP-1; OV-1; PRL-2; PRL2; ptp-IV1a; ptp-IV1b; PTP4A; PTPCAAX2

Protein Families:

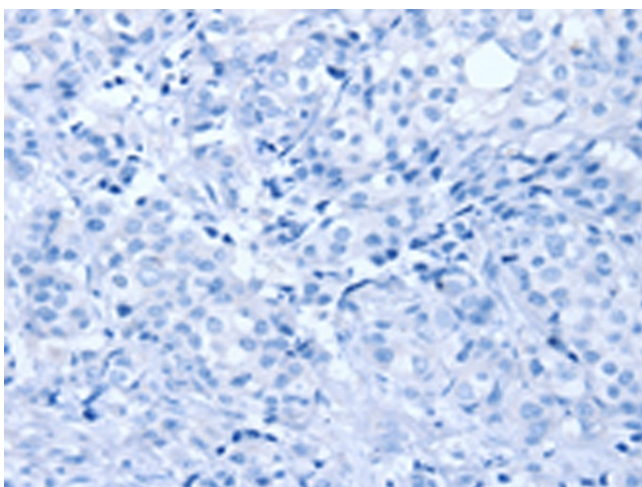
Druggable Genome, Phosphatase

Product images:

Gel: 10%SDS-PAGE
Lysate: 40 μ g
Lane 1-2: Mouse brain tissue
Mouse heart tissue
Primary antibody: TA351555 (PTP4A2 Antibody)
at dilution 1/200
Secondary antibody: Goat anti rabbit IgG at
1/8000 dilution
Exposure time: 30 seconds



Immunohistochemistry of paraffin-embedded
Human breast cancer tissue using TA351555
(PTP4A2 Antibody) at dilution 1/30 (Original
magnification: \times 200)



Immunohistochemistry of paraffin-embedded Human breast cancer tissue using TA351555 (PTP4A2 Antibody) at dilution 1/30, treated with synthetic peptide. (Original magnification: $\times 200$)