

Product datasheet for **TA351553S**

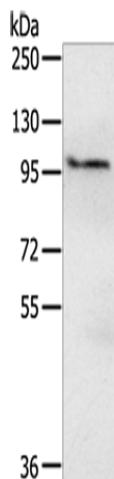
KIAA0090 (EMC1) Rabbit Polyclonal Antibody

Product data:

Product Type:	Primary Antibodies
Applications:	WB
Recommended Dilution:	WB: 200-1000 WB positive control: HepG2 cells
Reactivity:	Human, Mouse
Host:	Rabbit
Isotype:	IgG
Clonality:	Polyclonal
Immunogen:	Synthetic peptide of human EMC1
Formulation:	pH7.4 PBS, 0.05% NaN ₃ , 40% Glycerol
Purification:	Antigen affinity purification
Conjugation:	Unconjugated
Storage:	Store at -20°C as received.
Stability:	Stable for 12 months from date of receipt.
Predicted Protein Size:	112 kDa
Gene Name:	ER membrane protein complex subunit 1
Database Link:	NP_001258356 Entrez Gene 23065 Human Q8N766
Background:	This gene encodes a single-pass type I transmembrane protein, which is a subunit of the endoplasmic reticulum membrane protein complex (EMC). Multiple alternatively spliced transcript variants encoding different isoforms have been found for this gene.
Synonyms:	CAVIPMR; KIAA0090



[View online »](#)

Product images:


Gel: 6%SDS-PAGE
 Lysate: 40 µg
 Lane: HepG2 cells
 Primary antibody: [TA351553] (EMC1 Antibody) at dilution 1/200
 Secondary antibody: Goat anti rabbit IgG at 1/8000 dilution
 Exposure time: 15 seconds